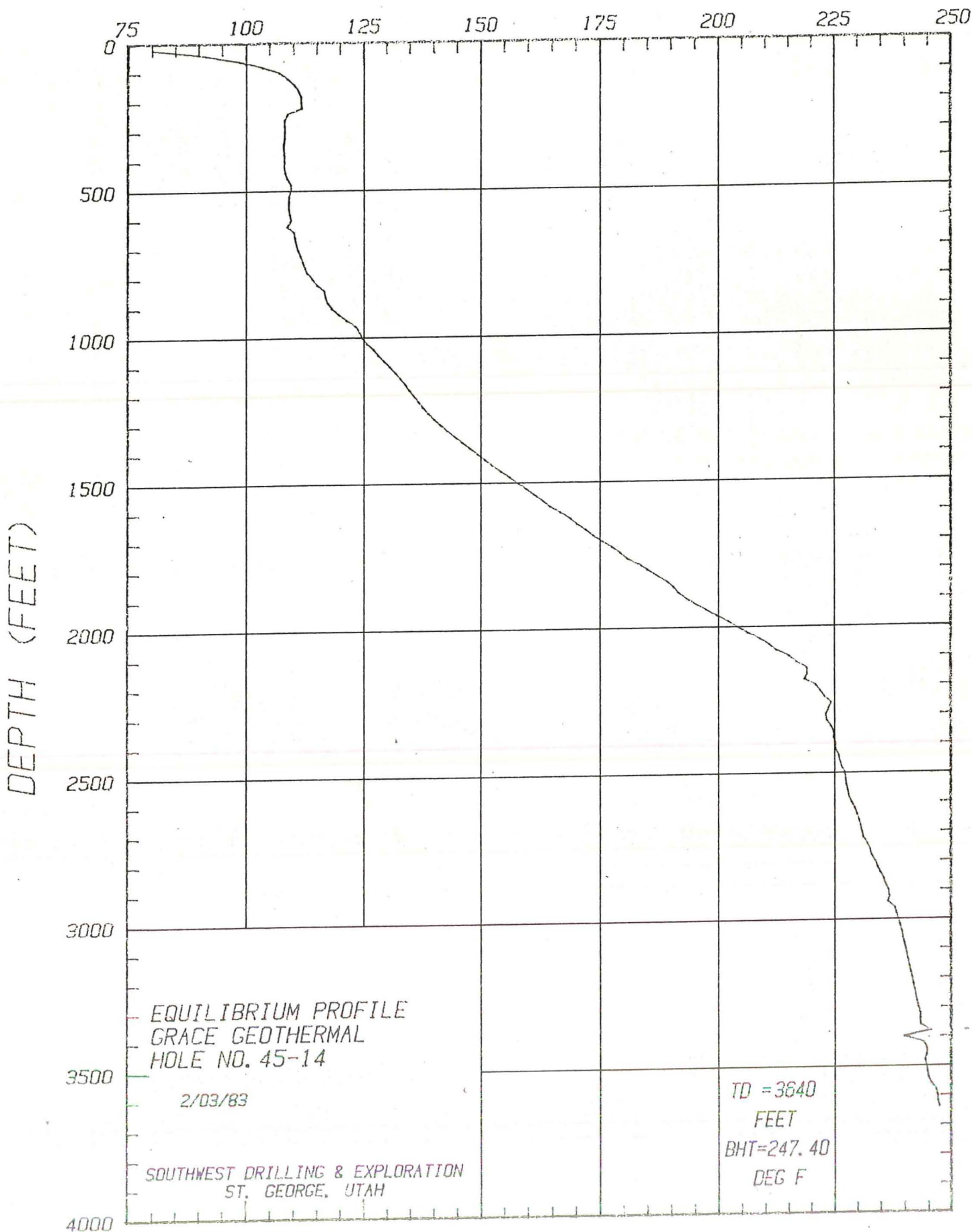
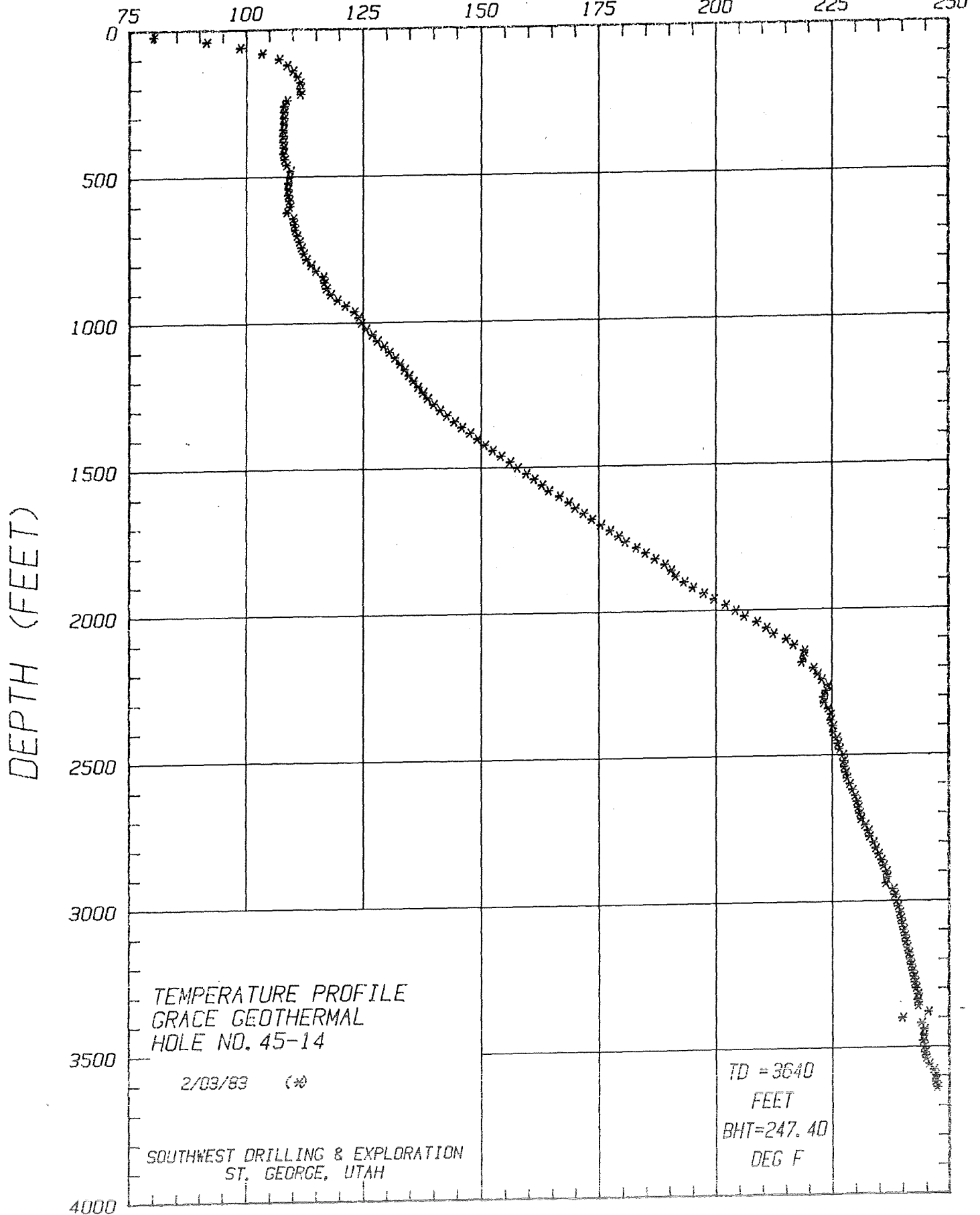


Baltazor Geothermal Field: Nevada  
TEMPERATURE (°F)

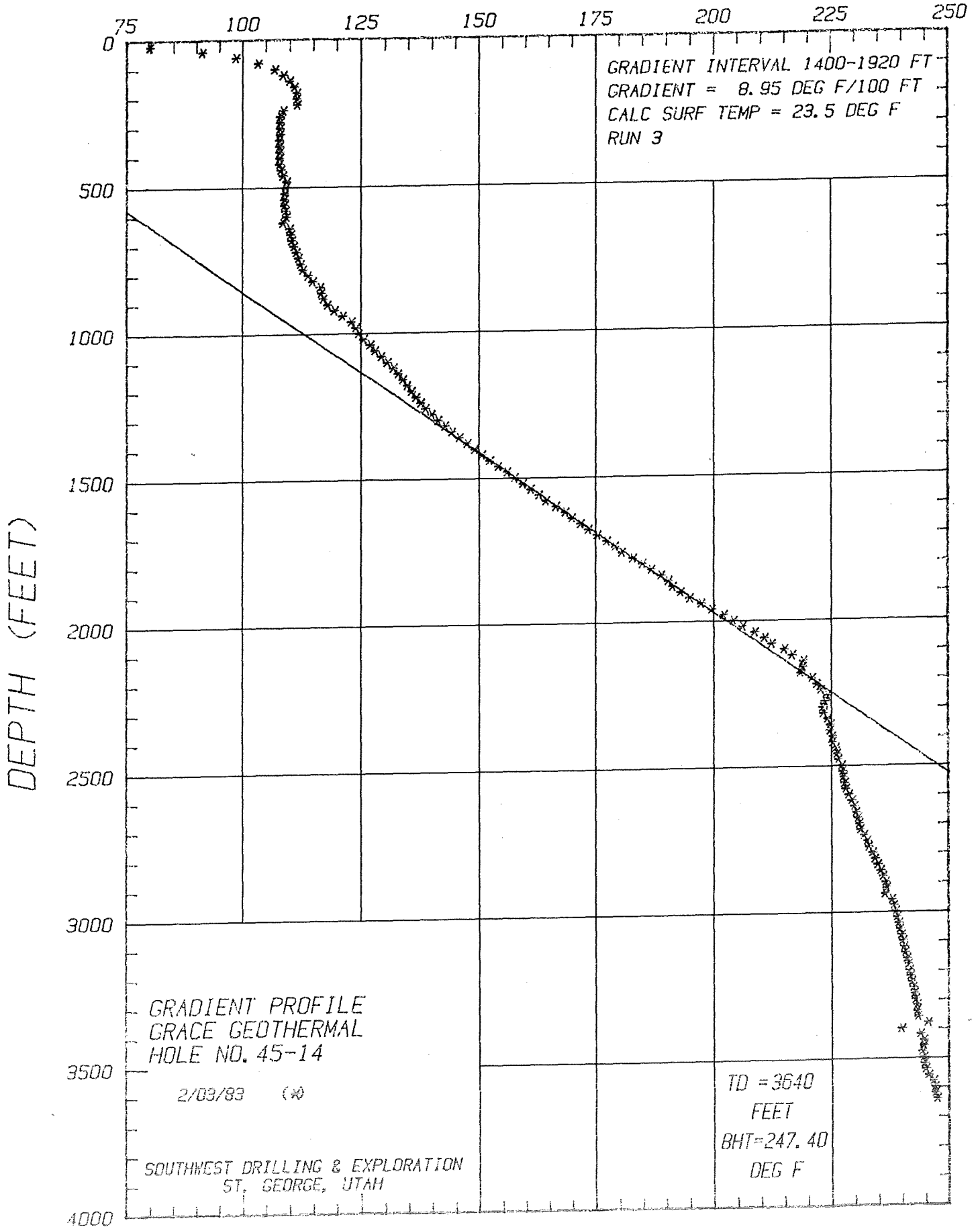
GL 04486-3



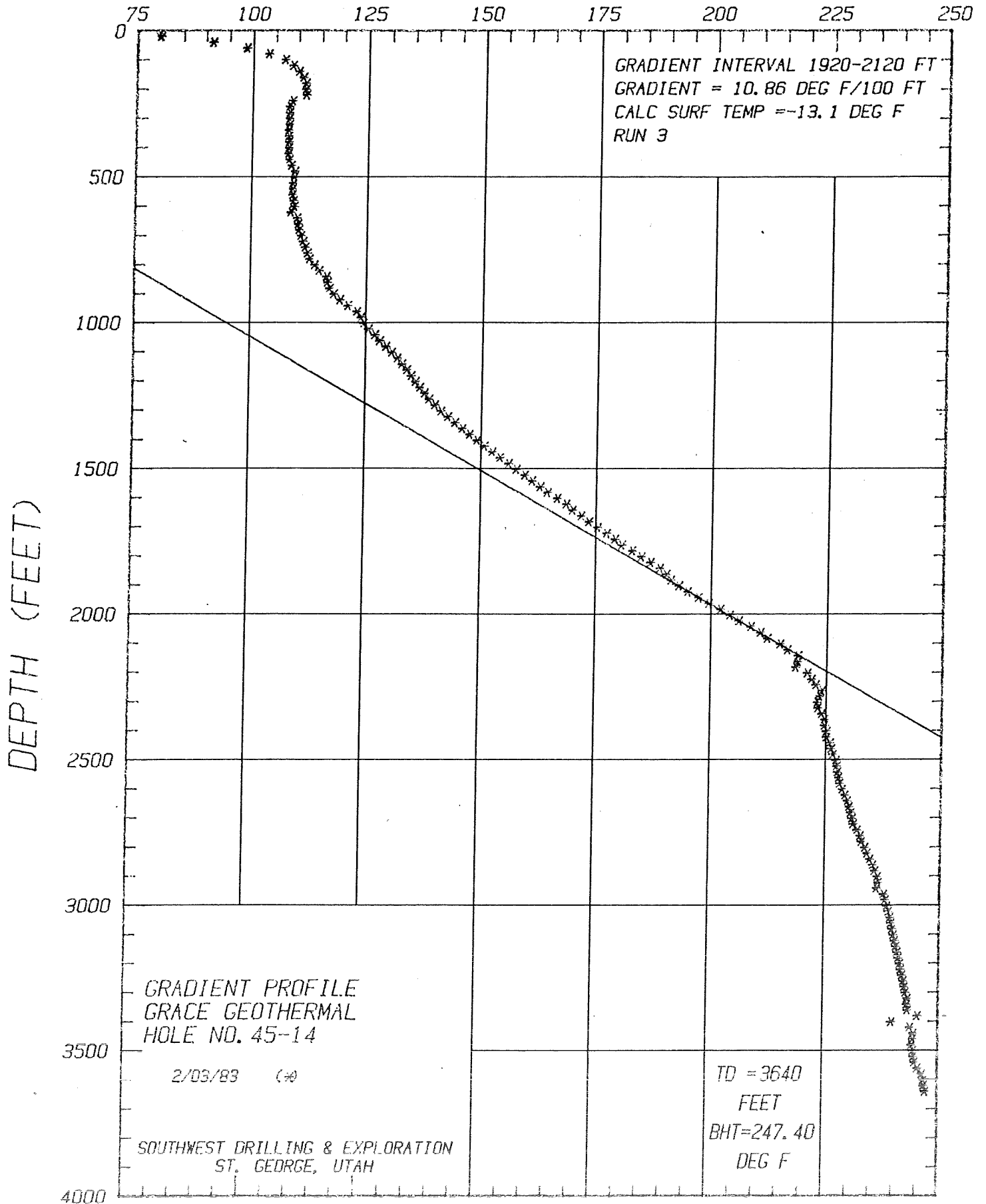
# TEMPERATURE (°F)



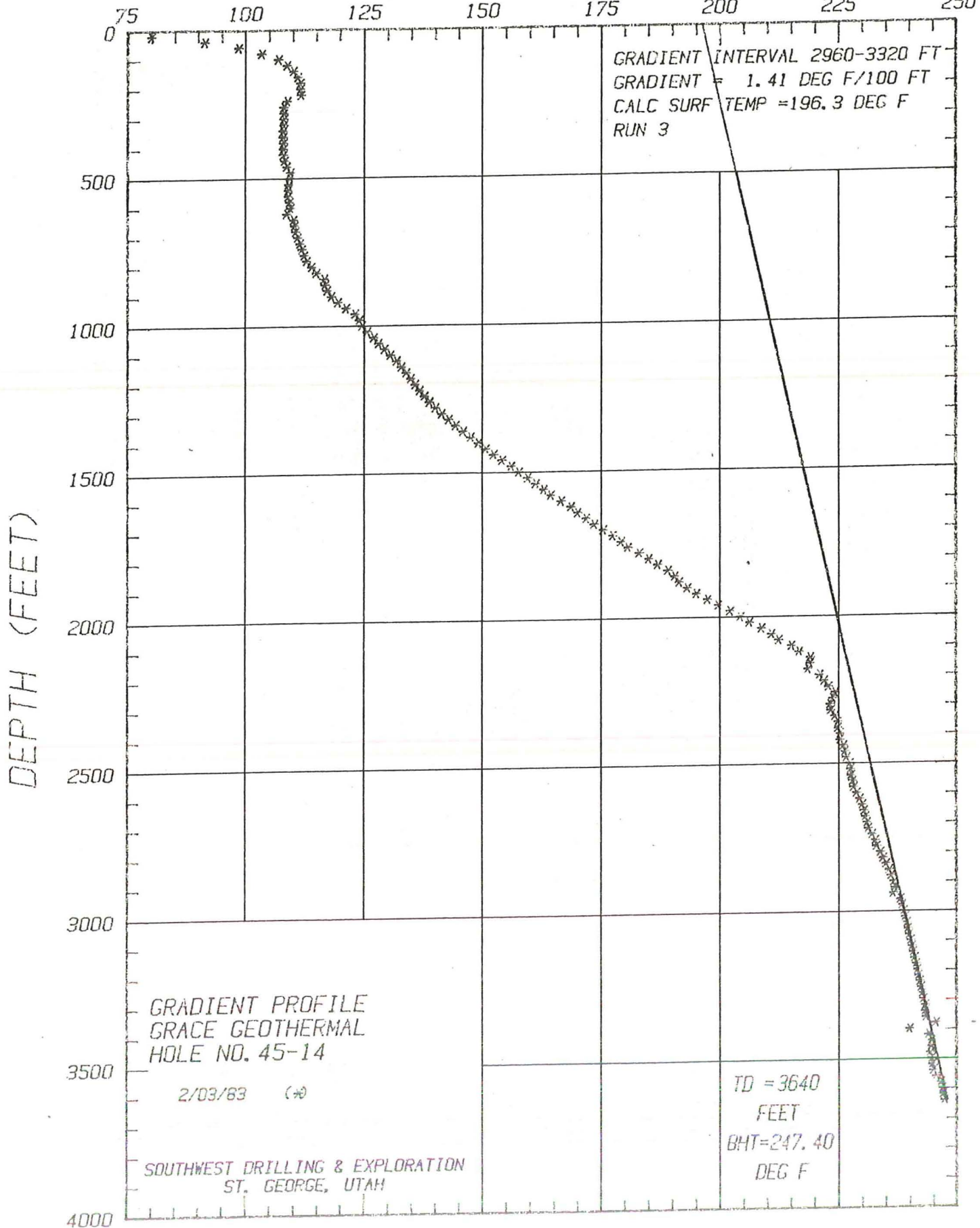
# TEMPERATURE (°F)



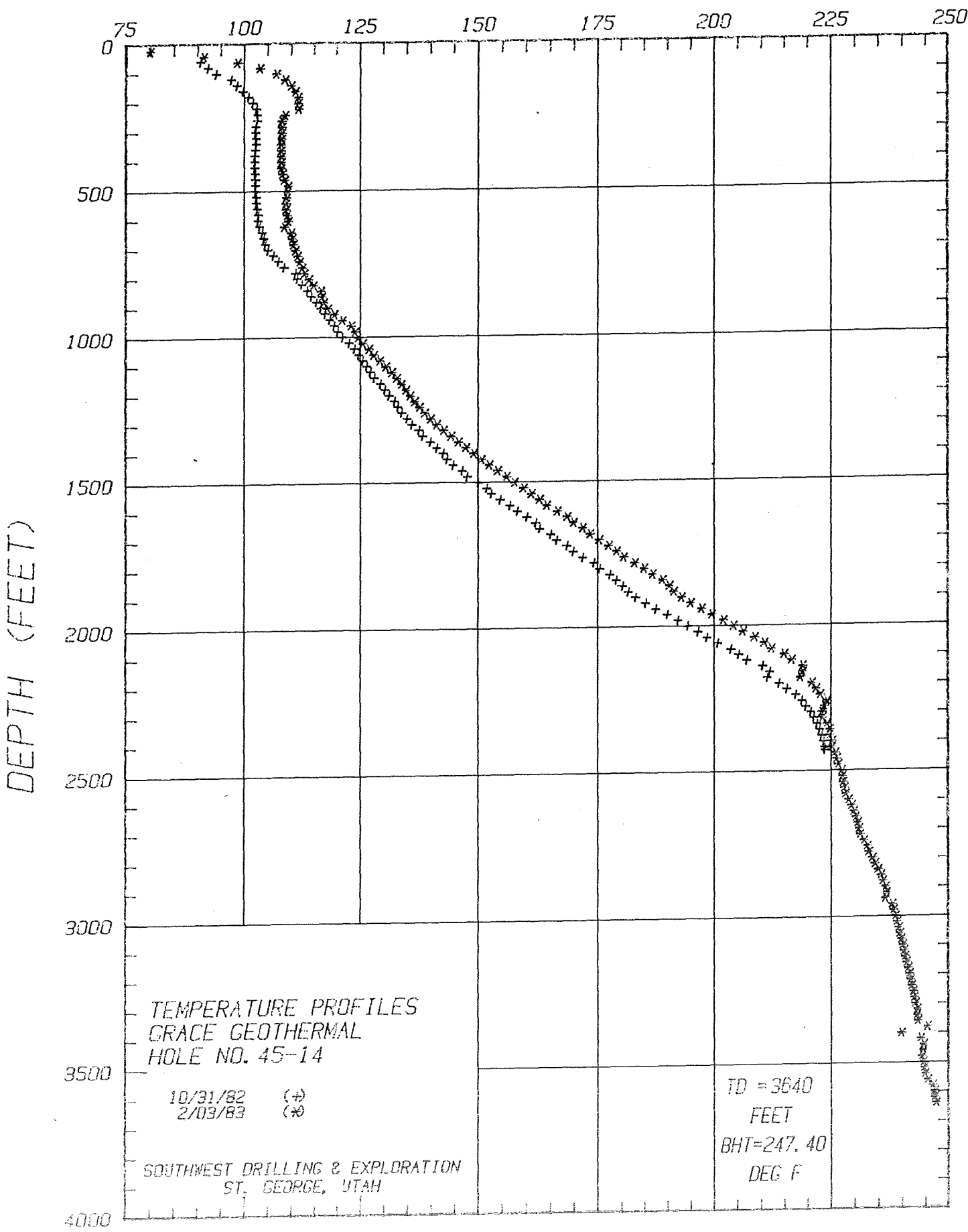
# TEMPERATURE (°F)



# TEMPERATURE (°F)



# TEMPERATURE (°F)



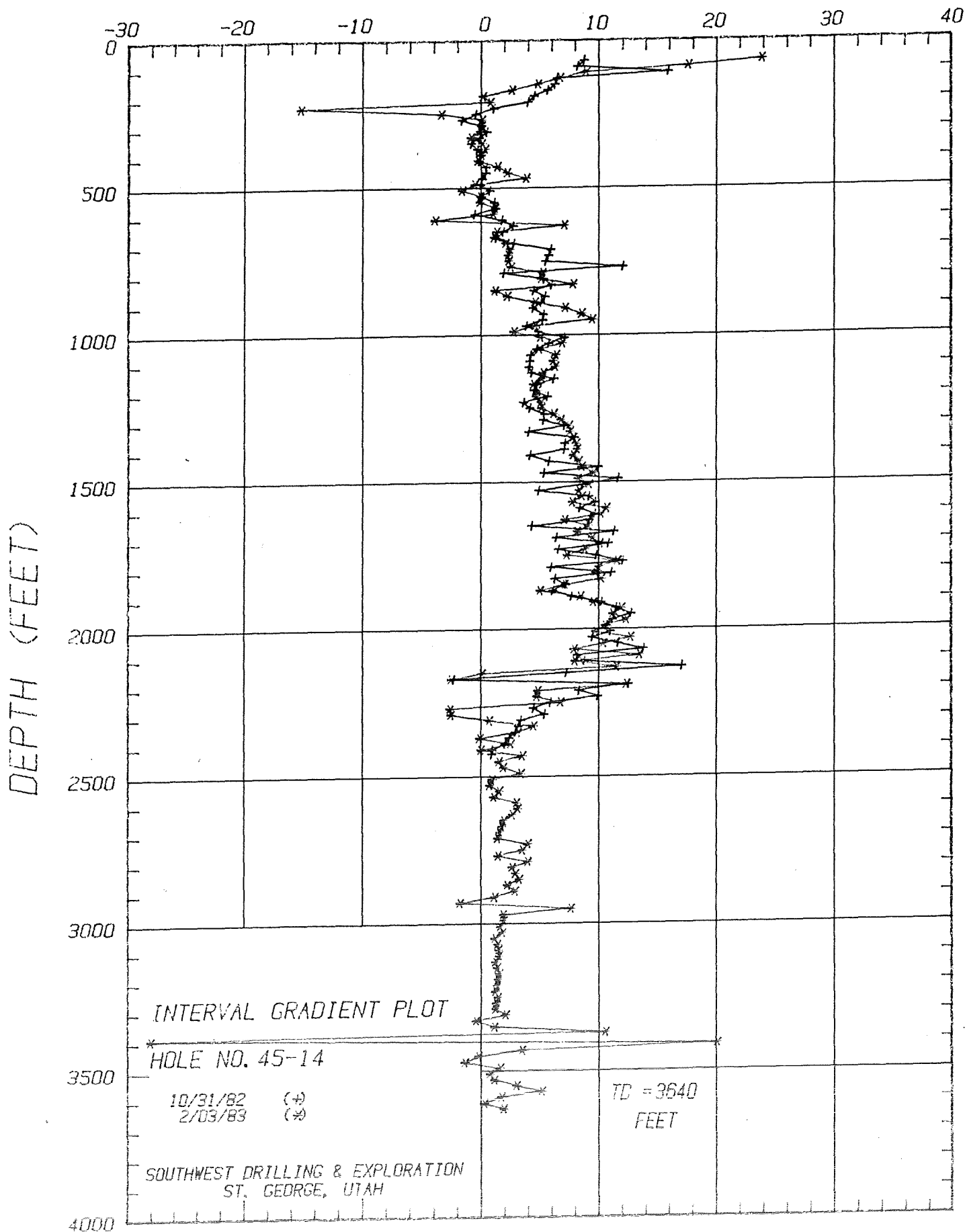
TEMPERATURE PROFILES  
GRACE GEOTHERMAL  
HOLE NO. 45-14

10/31/82 (+)  
2/03/83 (x)

SOUTHWEST DRILLING & EXPLORATION  
ST. GEORGE, UTAH

TD = 3640  
FEET  
BHT = 247.40  
DEG F

# GRADIENT (°F/100 FT)



TEMPERATURE/DEPTH DATA

HOLE NO: 45-14

SWDX JOB NO: 23-82

RUN 3

RUN DATE: 2/03/83

DEPTH (FEET)	TEMPERATURE (DEG F)	GRADIENT (DEG F/100 FT)	DEPTH (FEET)	TEMPERATURE (DEG F)	GRADIENT (DEG F/100 FT)
20	79.95		1020	125.69	5.1
40	91.41	57.3	1040	127.08	6.9
60	98.66	36.2	1060	128.07	5.0
80	103.43	23.8	1080	129.35	6.4
100	106.94	17.6	1100	130.58	6.1
120	108.72	8.9	1120	131.84	6.3
140	110.07	6.7	1140	132.89	5.3
160	111.04	4.9	1160	133.93	5.2
180	111.57	2.6	1180	134.82	4.5
200	111.60	.1	1200	135.78	4.8
220	111.76	.8	1220	136.71	4.7
240	108.73	-15.1	1240	137.73	5.1
260	108.06	-3.4	1260	138.76	5.1
280	108.07	.1	1280	140.00	6.2
300	108.08	.1	1300	141.36	6.8
320	108.07	-.1	1320	142.86	7.5
340	107.90	-.8	1340	144.38	7.6
360	107.92	.1	1360	145.96	7.9
380	107.99	.3	1380	147.59	8.1
400	108.00	.1	1400	149.23	8.2
420	107.95	-.3	1420	150.80	7.9
440	108.23	1.4	1440	152.47	8.3
460	108.68	2.2	1460	154.19	8.6
480	109.45	3.8	1480	156.10	9.6
500	109.34	-.6	1500	157.75	8.2
520	109.02	-1.6	1520	159.59	9.2
540	109.01	-.0	1540	161.26	8.3
560	108.99	-.1	1560	162.98	8.6
580	109.23	1.2	1580	164.53	7.8
600	109.44	1.0	1600	166.66	10.7
620	108.66	-3.9	1620	168.70	10.2
640	110.08	7.1	1640	170.12	7.1
660	110.34	1.3	1660	171.95	9.2
680	110.56	1.1	1680	173.58	8.2
700	110.98	2.1	1700	175.47	9.4
720	111.48	2.5	1720	177.49	10.1
740	111.94	2.3	1740	179.26	8.8
760	112.41	2.4	1760	180.72	7.3
780	112.92	2.5	1780	183.04	11.6
800	113.97	5.3	1800	185.04	10.0
820	115.00	5.1	1820	186.99	9.8
840	116.57	7.8	1840	189.04	10.2
860	116.80	1.2	1860	190.47	7.2
880	117.25	2.2	1880	191.47	5.0
900	118.17	4.6	1900	193.16	8.5
920	119.60	7.2	1920	195.07	9.6
940	121.31	8.5	1940	197.46	11.9
960	123.20	9.4	1960	199.70	11.2
980	124.12	4.6	1980	202.17	12.4
1000	124.68	2.8	2000	204.28	10.6



HOLE NO: 45-14  
 SWDX JOB NO: 23-82

RUN 3

RUN DATE: 2/03/83

DEPTH (FEET)	TEMPERATURE (DEG F)	GRADIENT (DEG F/100 FT)	DEPTH (FEET)	TEMPERATURE (DEG F)	GRADIENT (DEG F/100 FT)
2020	206.23	9.7	3020	239.06	1.6
2040	208.77	12.7	3040	239.42	1.8
2060	210.85	10.4	3060	239.65	1.1
2080	212.43	7.9	3080	239.92	1.4
2100	215.12	13.5	3100	240.21	1.5
2120	216.72	8.0	3120	240.51	1.5
2140	219.02	11.5	3140	240.75	1.2
2160	219.03	.0	3160	241.02	1.4
2180	218.52	-2.5	3180	241.32	1.5
2200	220.99	12.4	3200	241.60	1.4
2220	221.95	4.8	3220	241.87	1.3
2240	222.89	4.7	3240	242.11	1.2
2260	224.24	6.8	3260	242.39	1.4
2280	223.71	-2.6	3280	242.64	1.2
2300	223.20	-2.6	3300	242.88	1.2
2320	223.34	.7	3320	243.30	2.1
2340	224.23	4.4	3340	243.21	-1.4
2360	224.85	3.1	3360	243.43	1.1
2380	224.82	-1.1	3380	245.54	10.6
2400	225.33	2.5	3400	239.93	-28.1
2420	225.32	-1.0	3420	243.95	20.1
2440	226.02	3.5	3440	244.64	3.5
2460	226.32	1.5	3460	244.59	-1.3
2480	226.70	1.9	3480	244.31	-1.4
2500	227.38	3.4	3500	244.63	1.6
2520	227.56	.9	3520	244.78	.7
2540	227.70	.7	3540	245.00	1.1
2560	228.01	1.5	3560	245.60	3.0
2580	228.22	1.1	3580	246.63	5.1
2600	228.82	3.0	3600	246.97	1.7
2620	229.44	3.1	3620	247.02	.3
2640	229.97	2.6	3640	247.40	1.9
2660	230.35	1.9			
2680	230.70	1.7			
2700	231.01	1.5			
2720	231.28	1.4			
2740	232.07	4.0			
2760	232.77	3.5			
2780	233.05	1.4			
2800	233.84	3.9			
2820	234.36	2.6			
2840	234.94	2.9			
2860	235.59	3.2			
2880	236.03	2.2			
2900	236.60	2.9			
2920	236.82	1.1			
2940	236.46	-1.8			
2960	237.99	7.6			
2980	238.36	1.8			
3000	238.74	1.9			