

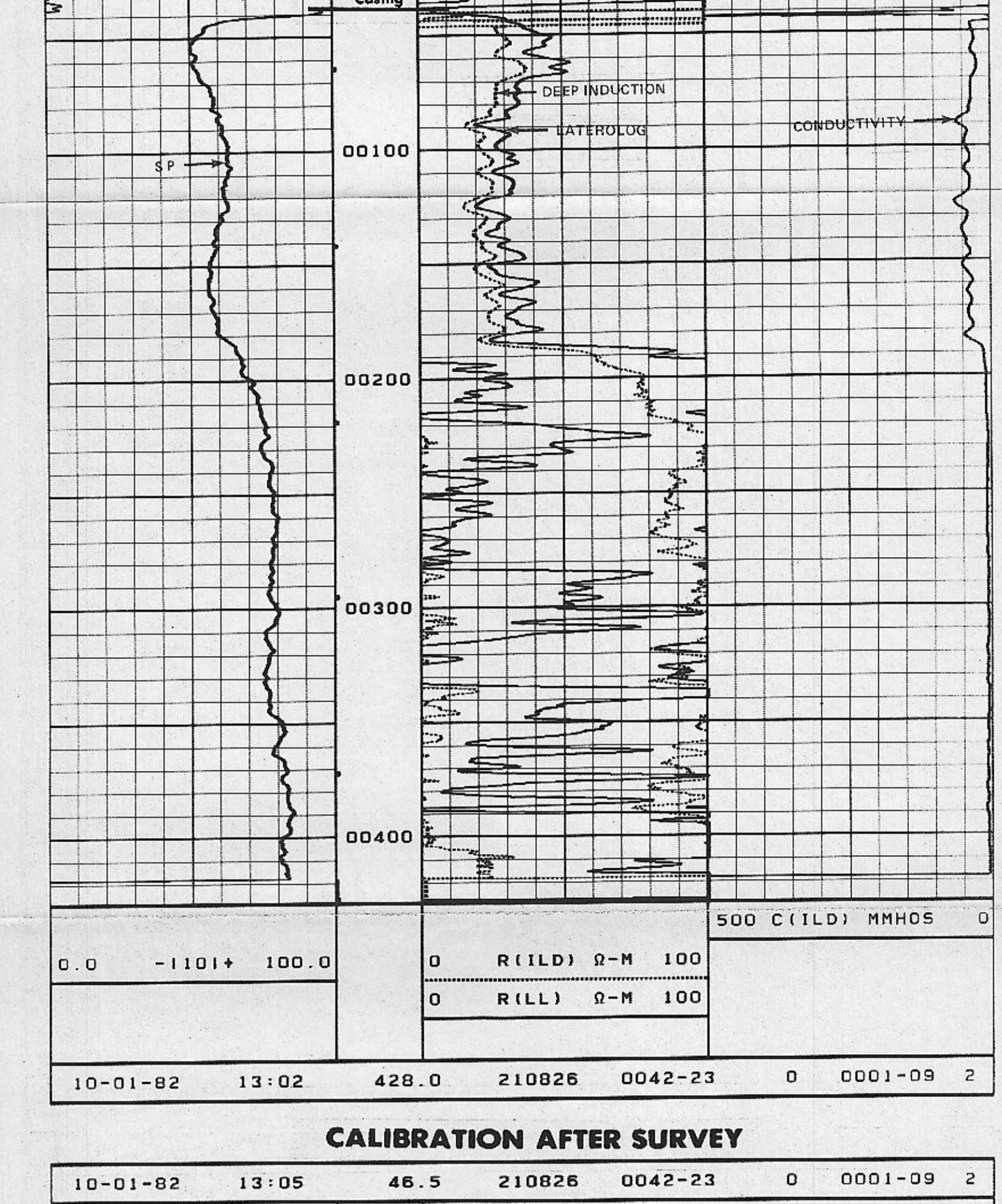
Company: GRACE GEOTHERMAL, Well: #45-14, Field: HUMBOLDT, State: NEVADA, Location: NE 1/4, N/E 1/4, S/W 1/4, CNE/GR, RHC/SONIC

Table with columns: Date, Sample No., Type Log, Depth, Scale Up Hole, Scale Down Hole. Includes equipment data and calibration data.

REMARKS: 50 #210826

NOTICE: All interpretations are opinions based on inferences from electrical or other measurements and we cannot, and do not, guarantee the accuracy or correctness of any interpretations...

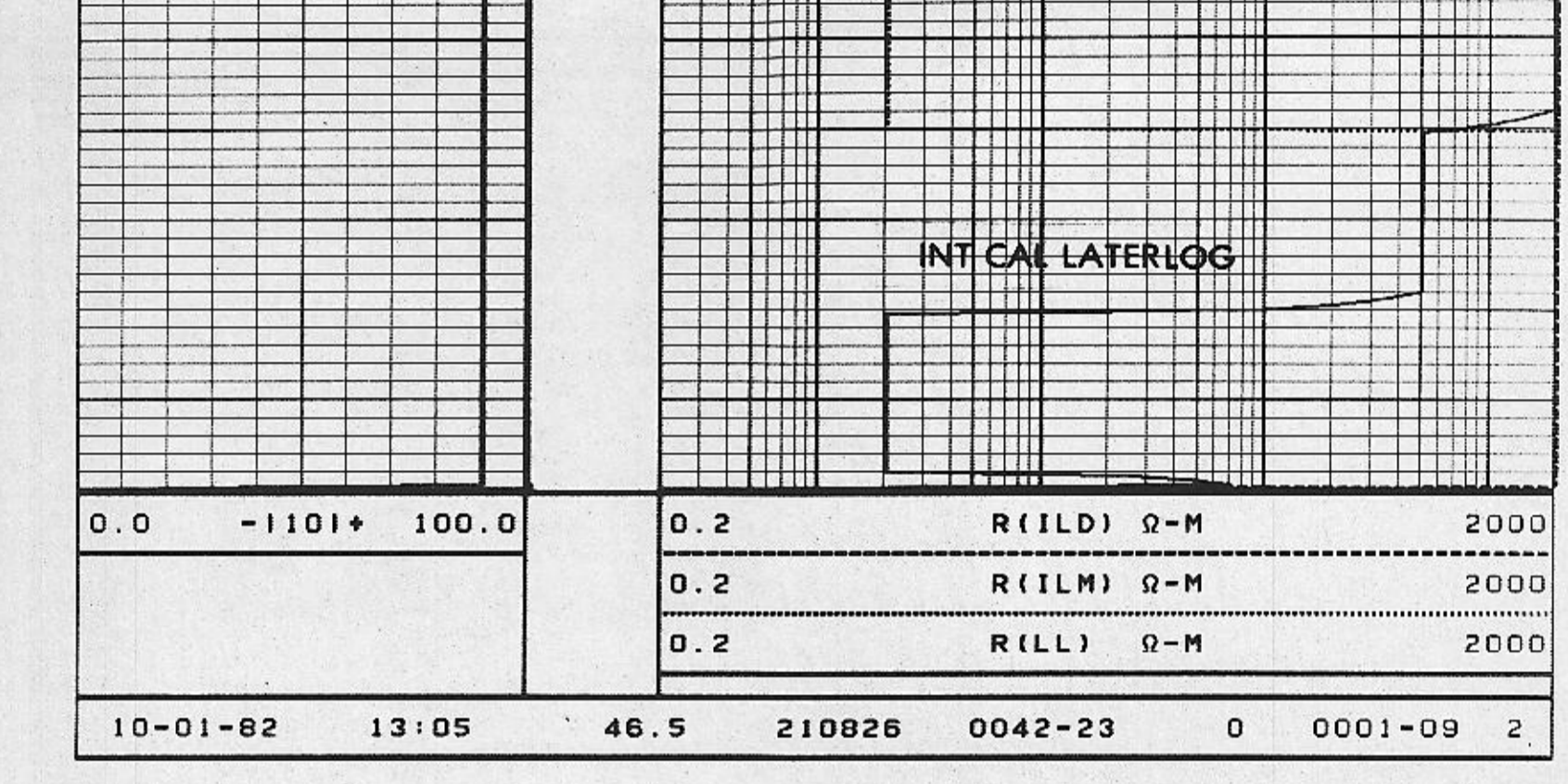
SPONTANEOUS POTENTIAL, RESISTIVITY, CONDUCTIVITY summary table.



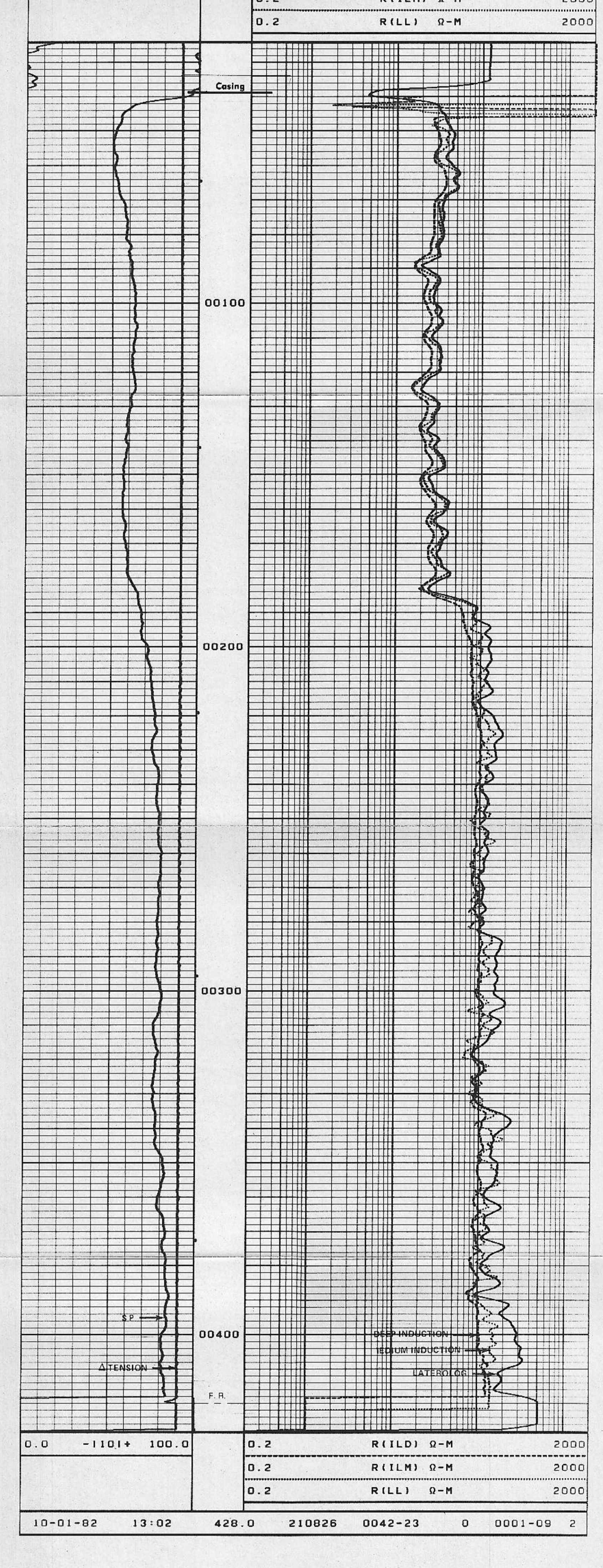
Summary table for run 10-01-82 13:02. Values: 428.0, 210826, 0042-23, 0, 0001-09, 2.

CALIBRATION AFTER SURVEY

Summary table for calibration run 10-01-82 13:05. Values: 46.5, 210826, 0042-23, 0, 0001-09, 2.



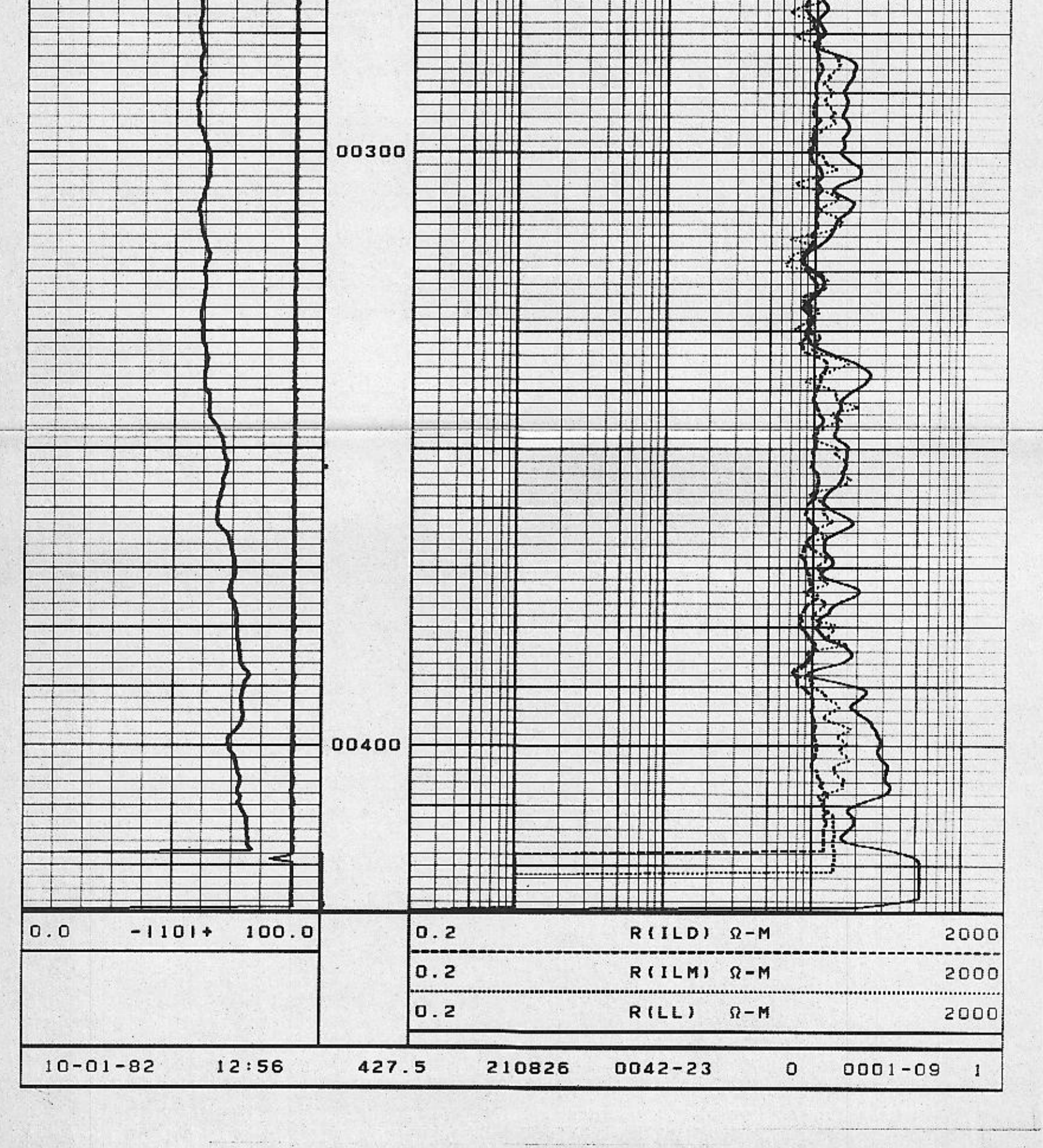
Summary table for calibration run 10-01-82 13:05. Values: 46.5, 210826, 0042-23, 0, 0001-09, 2.



Summary table for run 10-01-82 13:02 (repeated). Values: 428.0, 210826, 0042-23, 0, 0001-09, 2.

REPEAT SECTION

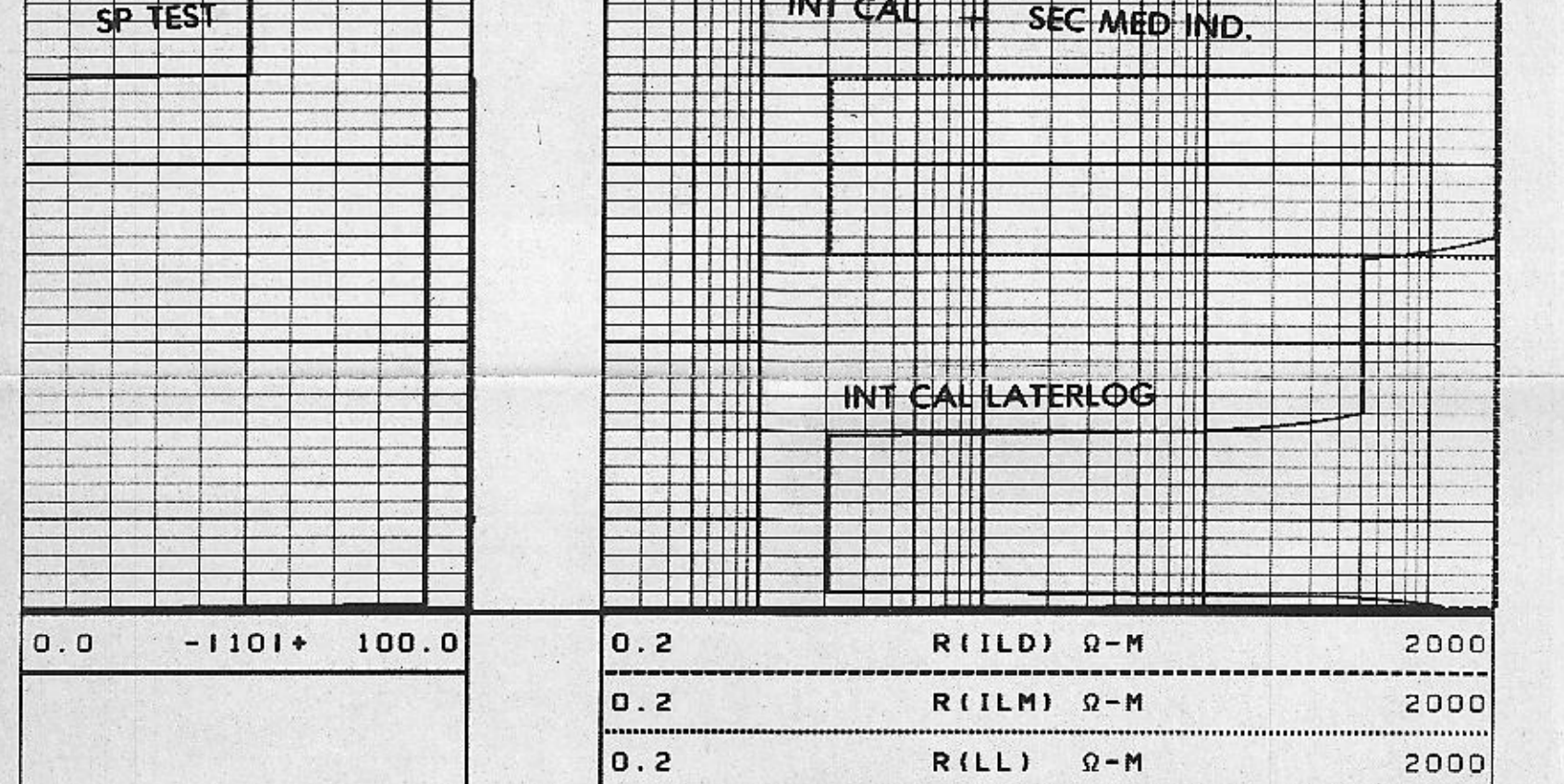
Summary table for repeat run 10-01-82 12:56. Values: 227.0, 210826, 0042-23, 0, 0001-09, 1.



Summary table for repeat run 10-01-82 12:56. Values: 427.5, 210826, 0042-23, 0, 0001-09, 1.

CALIBRATION BEFORE SURVEY

Summary table for calibration run 10-01-82 12:32. Values: 158.5, 210826, 0042-23, 0, 0001-09, 0.



Summary table for calibration run 10-01-82 12:32. Values: 158.5, 210826, 0042-23, 0, 0001-09, 0.

Company: GRACE GEOTHERMAL, Well: #45-14, Field: HUMBOLDT, State: NEVADA, Log No: 4280