

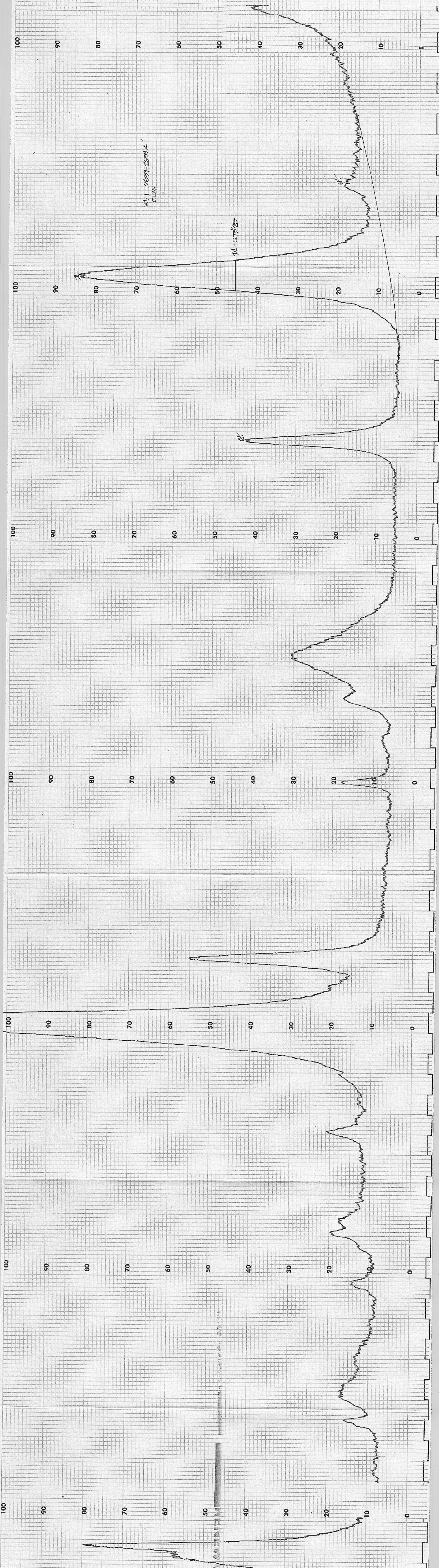
GL04530

VC-1 2θAZ  
CLAY 12/1/86

$2\theta = 0.1772\theta$

NC-1 2699-2699.4  
CLAY

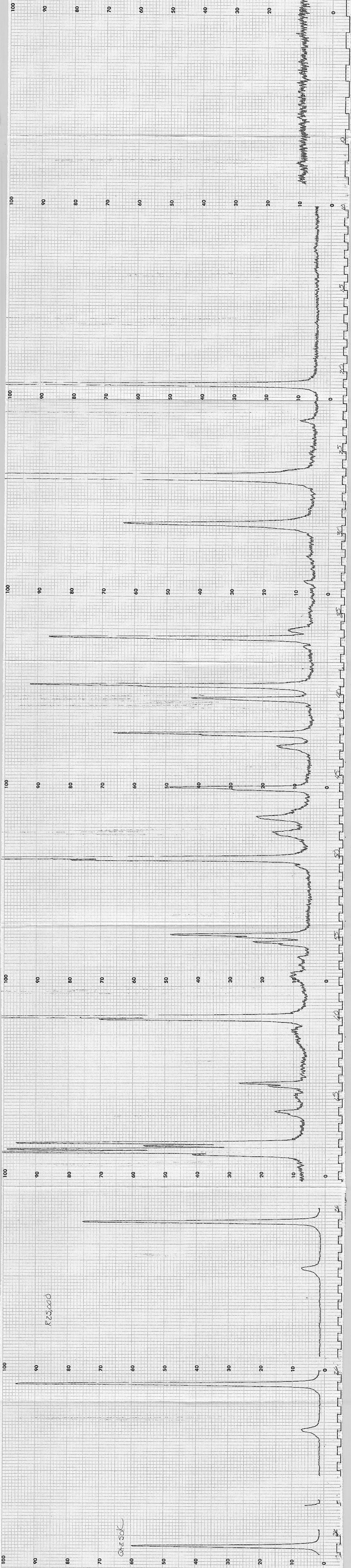
$\mu = 0.17 \times 10^{-2}$

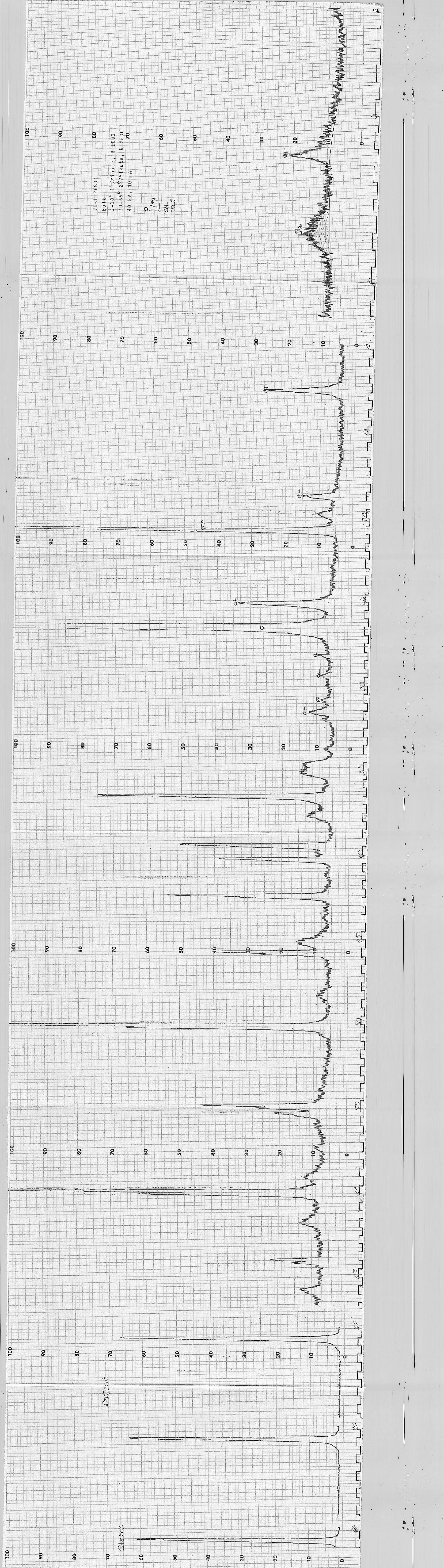


VC-1 2688.8'  
Bulk  
2-10° 1°/Minute, R 1000  
10-65° 2°/Minute, R 2500  
40 kV, 40 mA

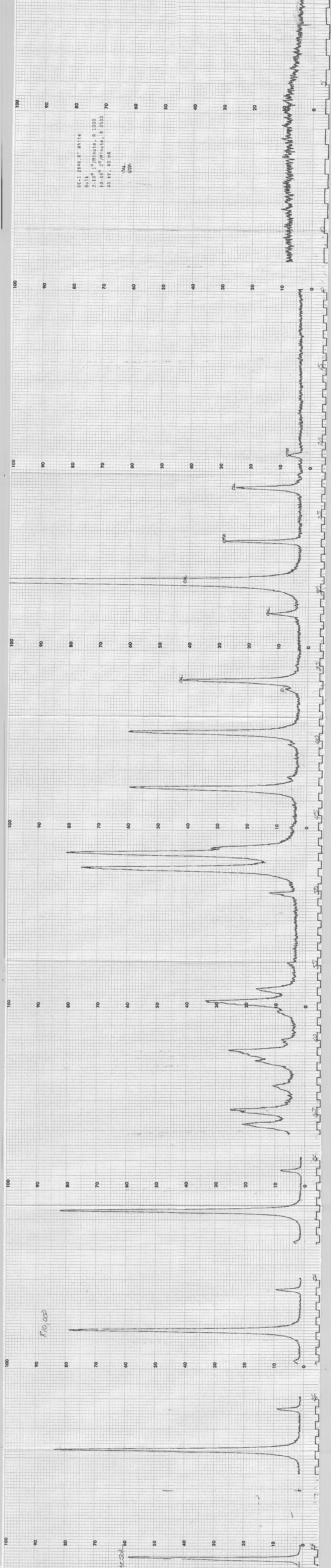
CALCAREOUS  
QUARTZ ARENITE

QUARTZ  
CALCITE









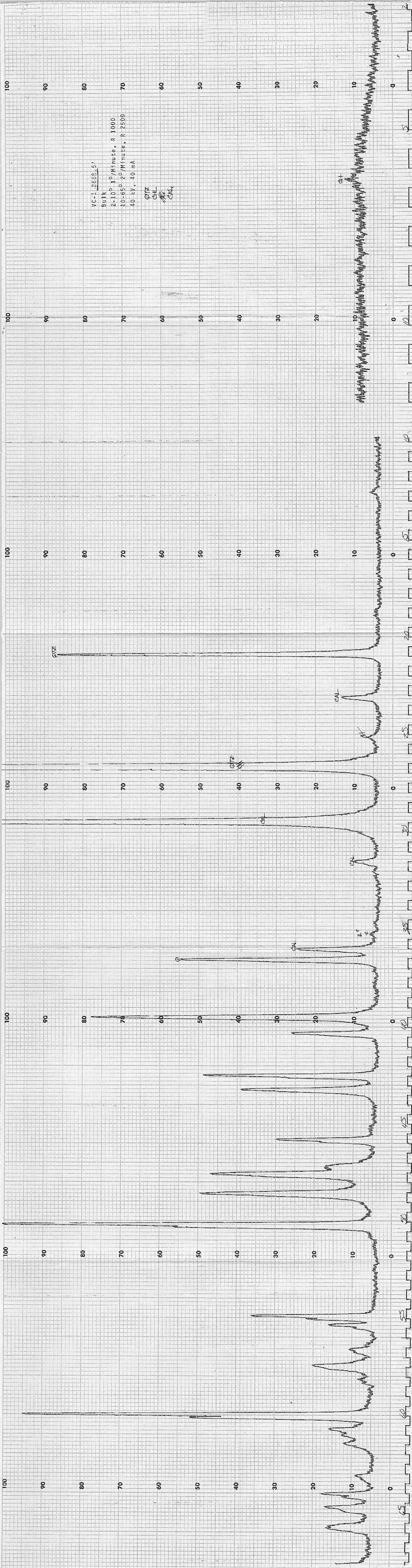
R10,000

CAL

OTZ

VC-1 26681.6  
Bulk  
2-10<sup>5</sup> 1<sup>0</sup>/Minute, R 1000  
10-65<sup>0</sup> 2<sup>0</sup>/Minute, R 2500  
40 KV, 40 mA

QIZ  
CAL  
CAL



100

90

80

70

60

50

40

30

20

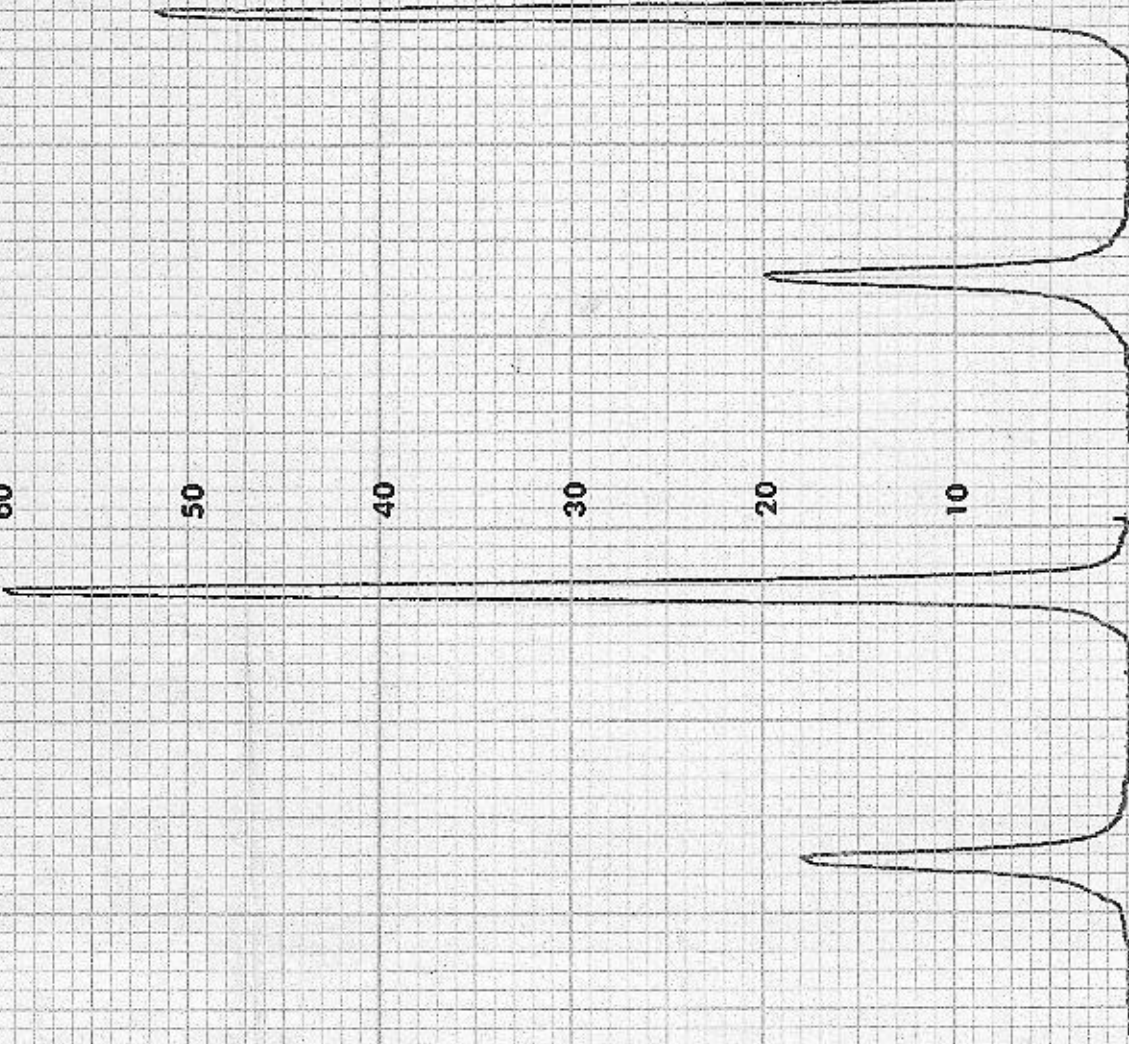
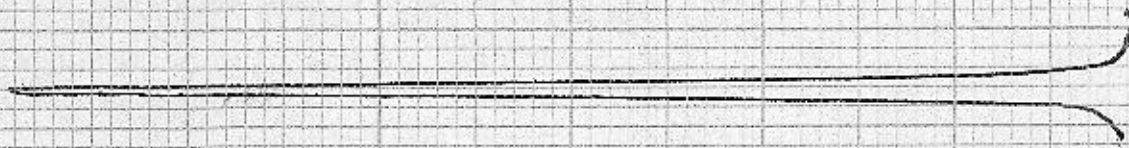
10

0

VC-1 2668.5'

R25000

Q+850K



24

26

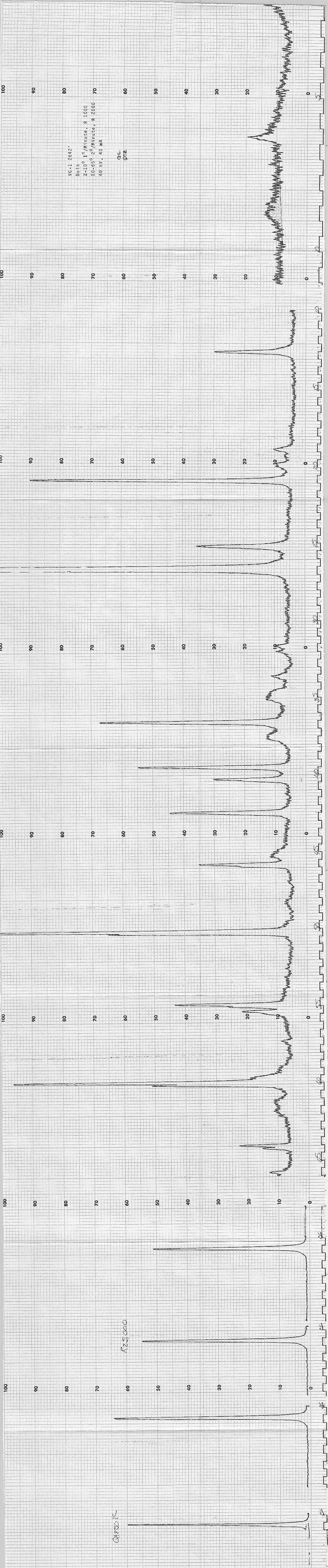
25

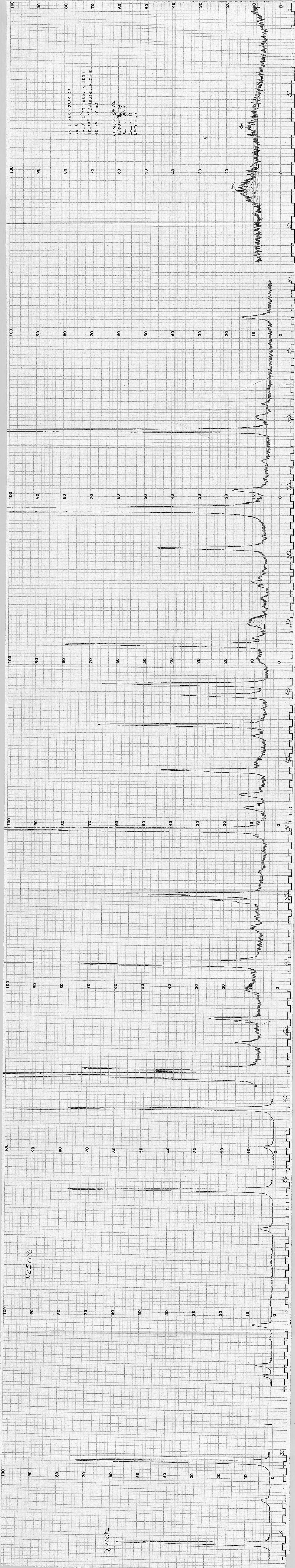


VC-1 2642,  
Butik  
2-100 1°/Minute, R 1000  
10-65 2°/Minute, R 2500  
40 KV, 40 mA

QF301C

R25000





VC-2A 2639-2639.41  
Clay, Glycol  
2-100 R 1000  
10-22.0 40-50.0 R 2500  
1.0/Minute  
40 KV, 40 mA

