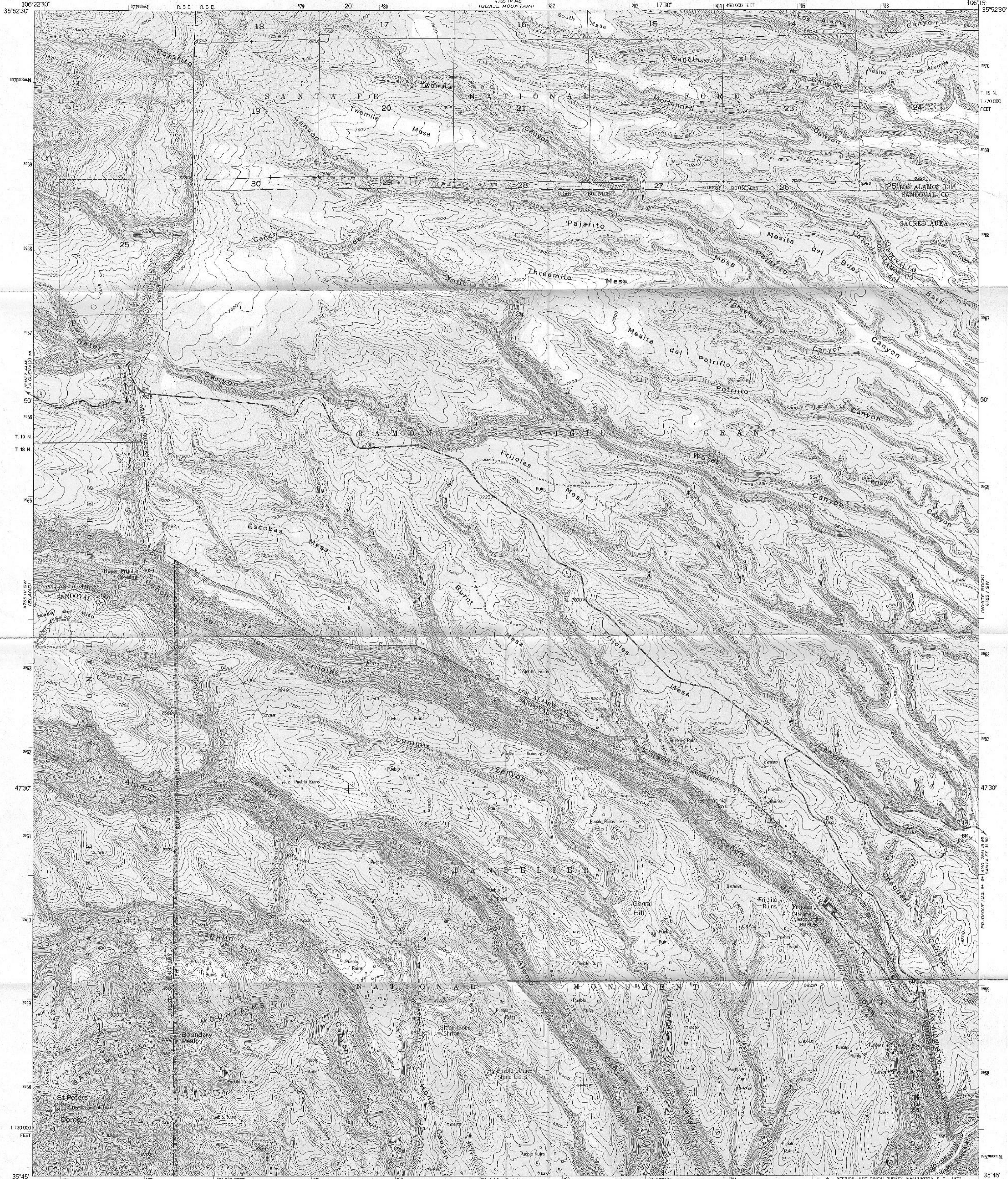


GL04537

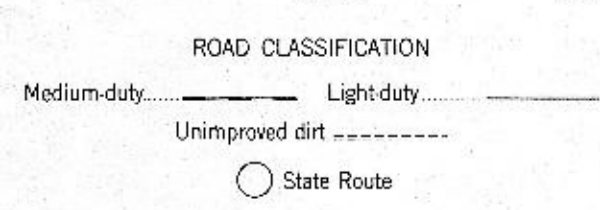
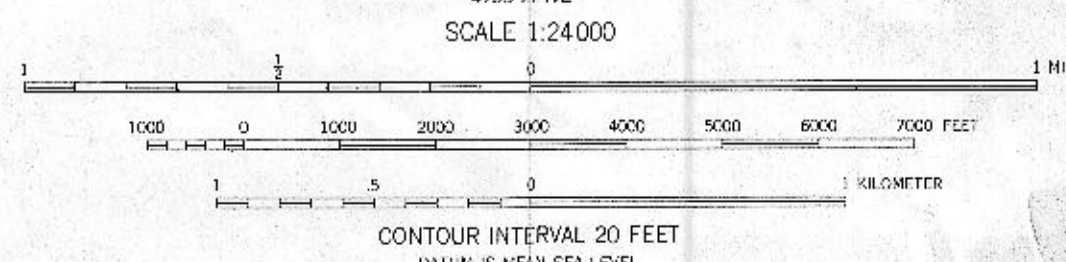
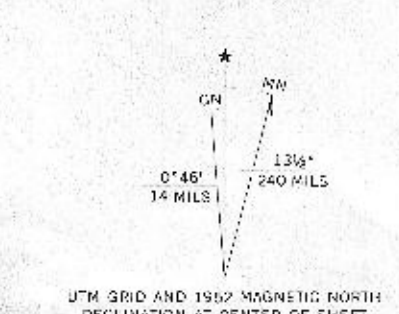
UNITED STATES
DEPARTMENT OF THE INTERIOR
GEOLOGICAL SURVEY

GL04537

FRIJOLAS QUADRANGLE
NEW MEXICO
7.5 MINUTE SERIES (TOPOGRAPHIC)
SEA FRIJOLAS QUADRANGLE



Maped, edited, and published by the Geological Survey
Control by USGS and USC&GS
Topography from aerial photographs by multiplex methods 1952
and by plane-table surveys 1937
Aerial photographs taken 1947. Field check 1952
Polyconic projection. 1927 North American datum
10,000-foot grid based on New Mexico coordinate system,
central zone
1000-meter Universal Transverse Mercator grid links,
zone 13, shown in blue
Dashed land lines indicate approximate locations
Land lines unsurveyed in T. 19 N., R. 5 E.
Unchecked elevations are shown in brown.



THIS MAP COMPLEIES WITH NATIONAL MAP ACCURACY STANDARDS
FOR SALE BY U. S. GEOLOGICAL SURVEY, DENVER, COLORADO 80225, OR WASHINGTON, D. C. 20242
A FOLDER DESCRIBING TOPOGRAPHIC MAPS AND SYMBOLS IS AVAILABLE ON REQUEST

FRIJOLAS, N. MEX.
SEA FRIJOLAS QUADRANGLE
N3545—W10615/7.5

1952

AMS 4755 IV SE—SERIES V881