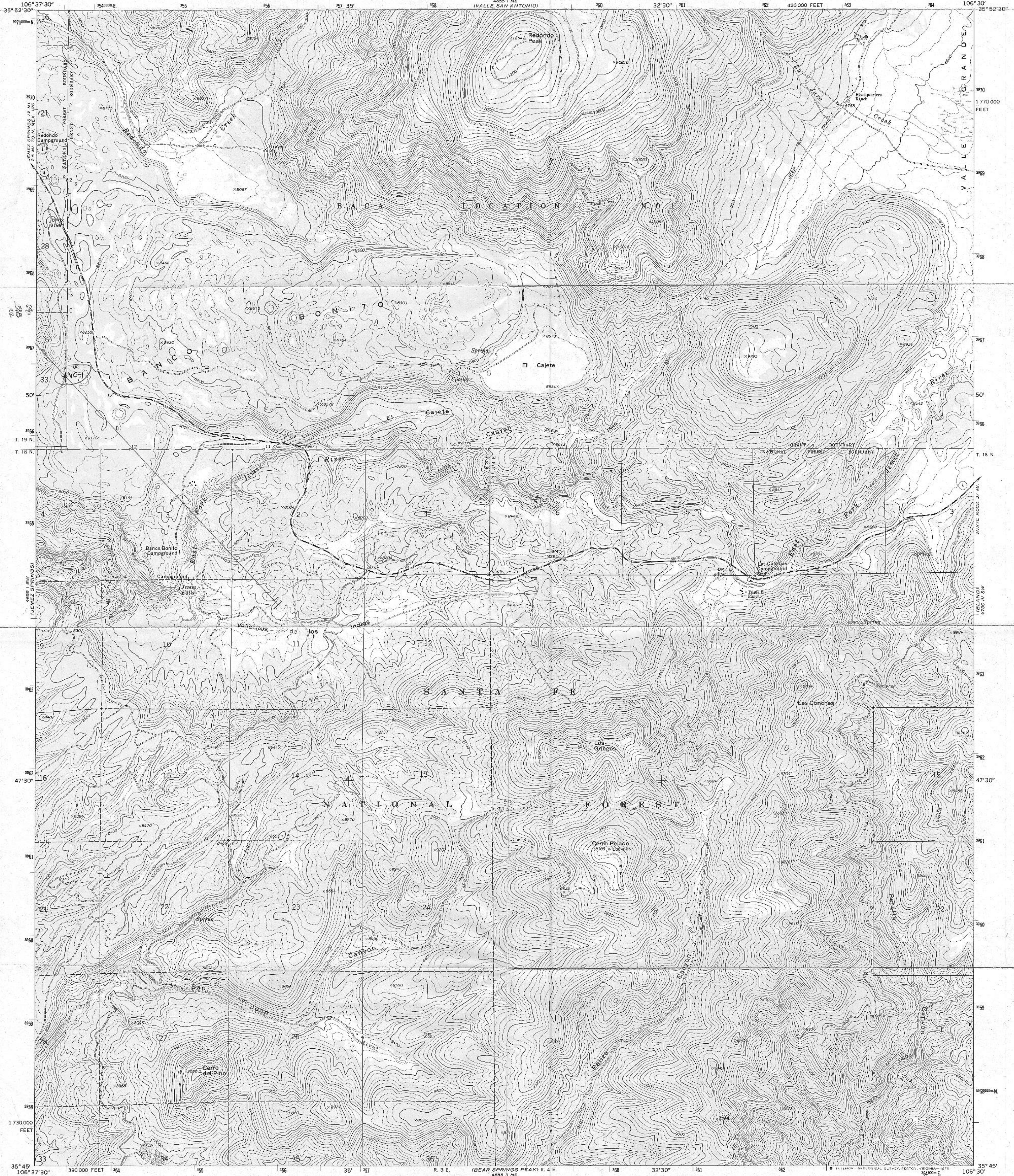
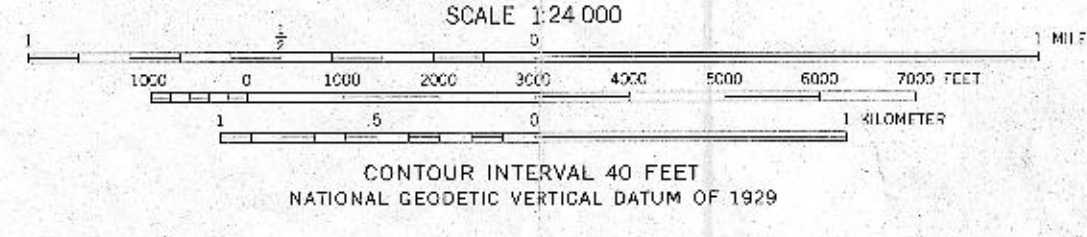
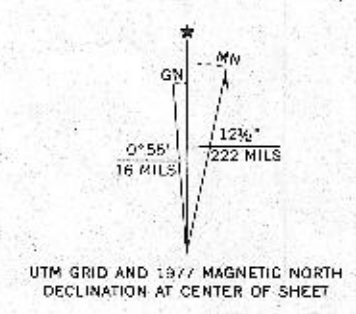


278 52.5R
95.35 U



Mapped by the U.S. Forest Service
Edited and published by the Geological Survey
Control by USGS, NOS/NOAA and USFS
Topography by photogrammetric methods from aerial
photographs taken 1964-65. Field checked by USGS 1970
Polyconic projection. 1927 North American datum
10,000-foot grid based on New Mexico coordinate system,
central zone
1000-meter Universal Transverse Mercator grid ticks,
zone 13, shown in blue
Where omitted, land lines have not been established
Revisions shown in purple compiled by the Geological Survey from
aerial photographs taken 1976. Map edited 1977
This information not field checked



ROAD CLASSIFICATION
Primary highway, hard surface
Secondary highway, hard surface
Light-duty road, hard or improved surface
Unimproved road
Interstate Route U.S. Route State Route

REDONDO PEAK, N. MEX.
SE/4 JEMEZ SPRINGS 15' QUADRANGLE
N3545-W10630/7.5

1970
PHOTOREVISED 1977
AMS 4655 I SB-SERIES V881

THIS MAP COMPLIES WITH NATIONAL MAP ACCURACY STANDARDS
FOR SALE BY U.S. GEOLOGICAL SURVEY, DENVER, COLORADO 80225, OR RESTON, VIRGINIA 22092
A FOLDER DESCRIBING TOPOGRAPHIC MAPS AND SYMBOLS IS AVAILABLE ON REQUEST