

GL04602

VC-2B 2605
Clay, Glycol

7% EXPANDABLE

$\Delta C_p = 0.70$
 $\Delta H_{21} = 8.60$

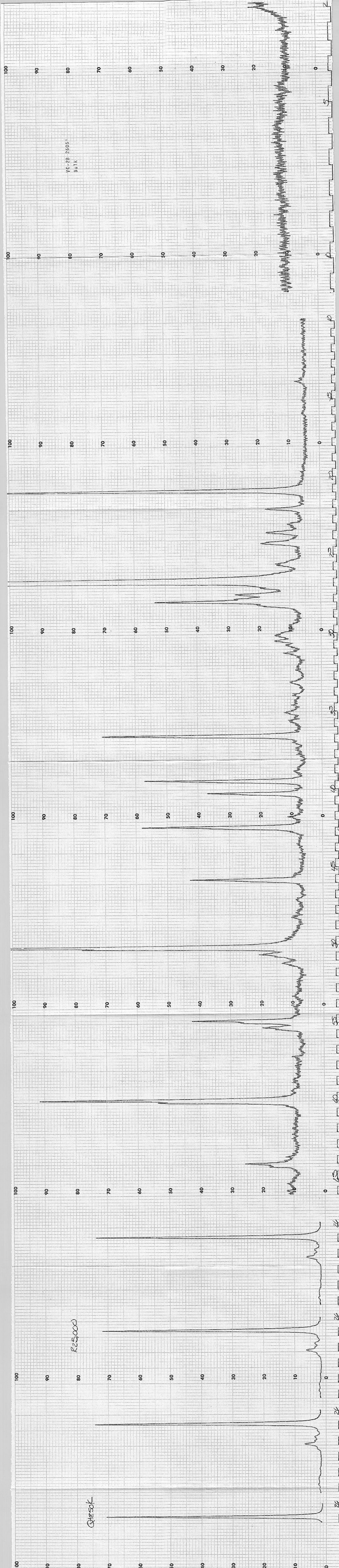
16.6
18.9

0.64

VC-2B-26051
BULK

RES-000

QRESOK



100

90

80

70

60

50

40

30

20

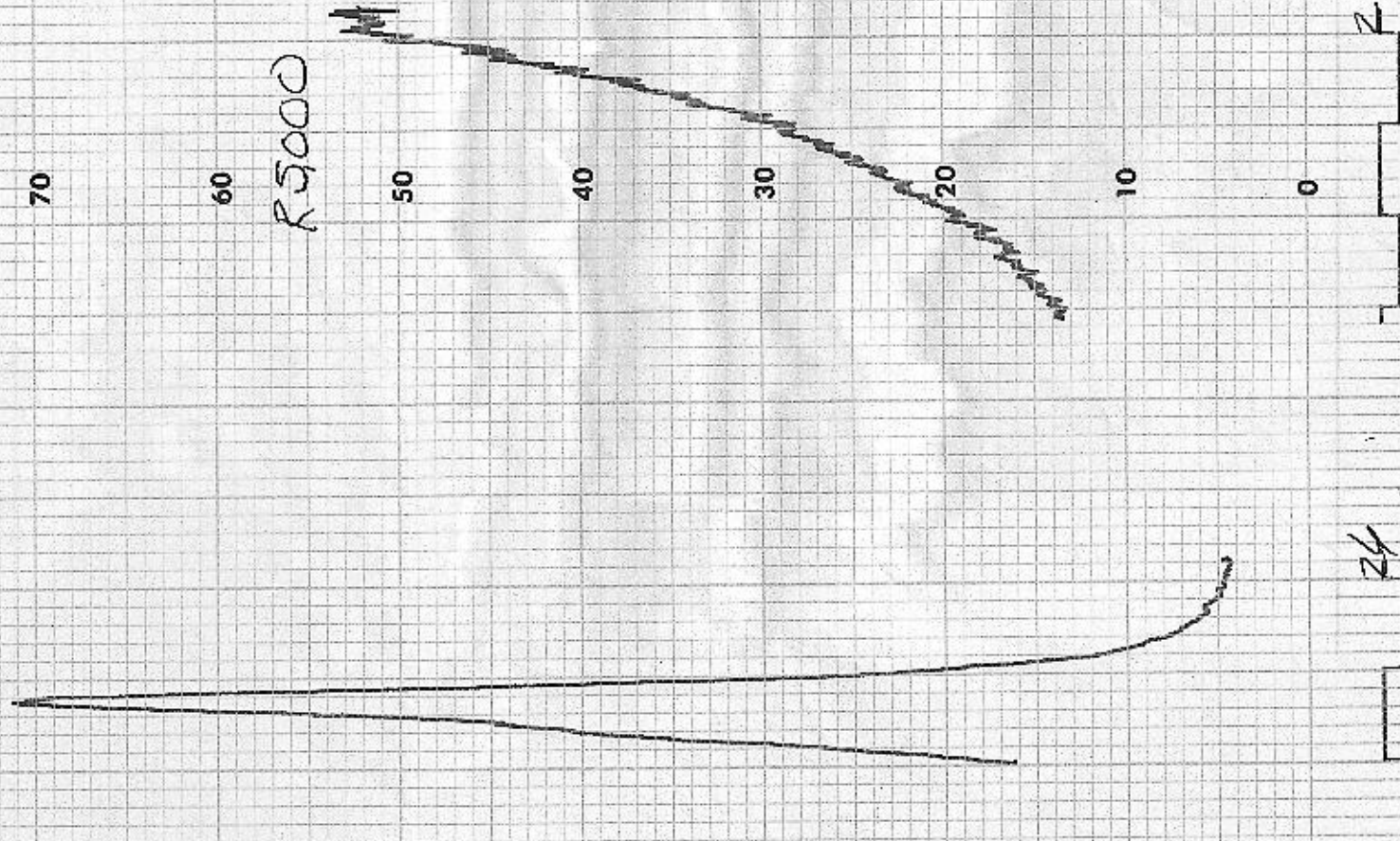
10

0

R10,000

VC-2B 2605'

R5000



VC-2B 2605

100

90

80

70

60

50

40

30

20

0

VC-2B 2605
DuTK, Glycol

100

90

80

70

60

50

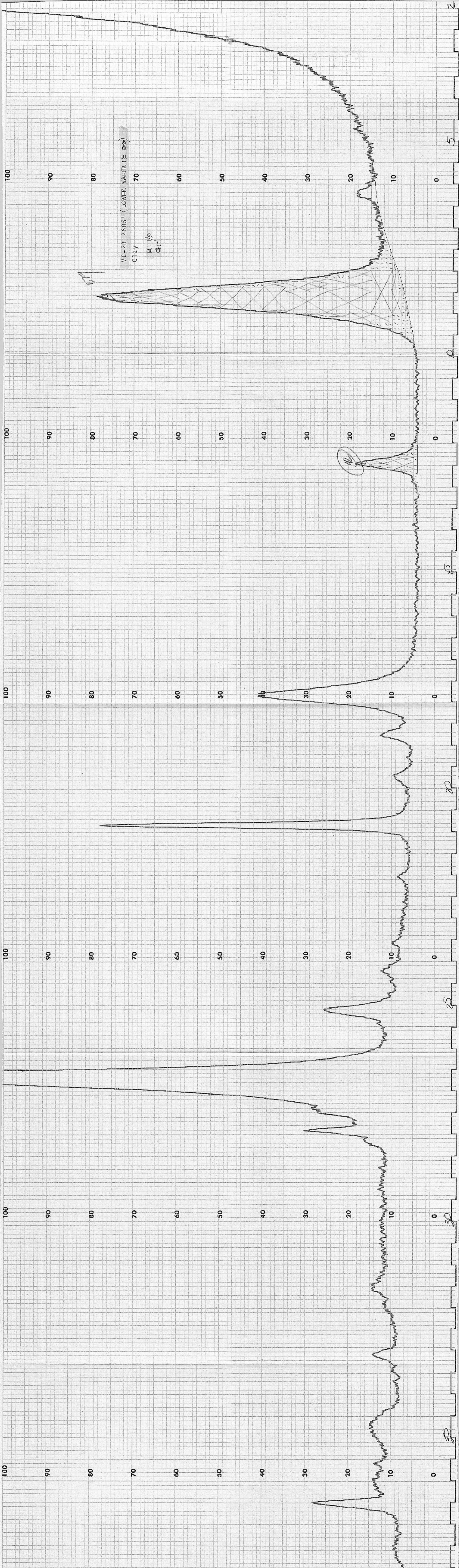
40

30

20

10

0



VC-2B 2605 (LOWER SANTA FE GROUP)

Clay

ML/5

CH+

67

H

4b

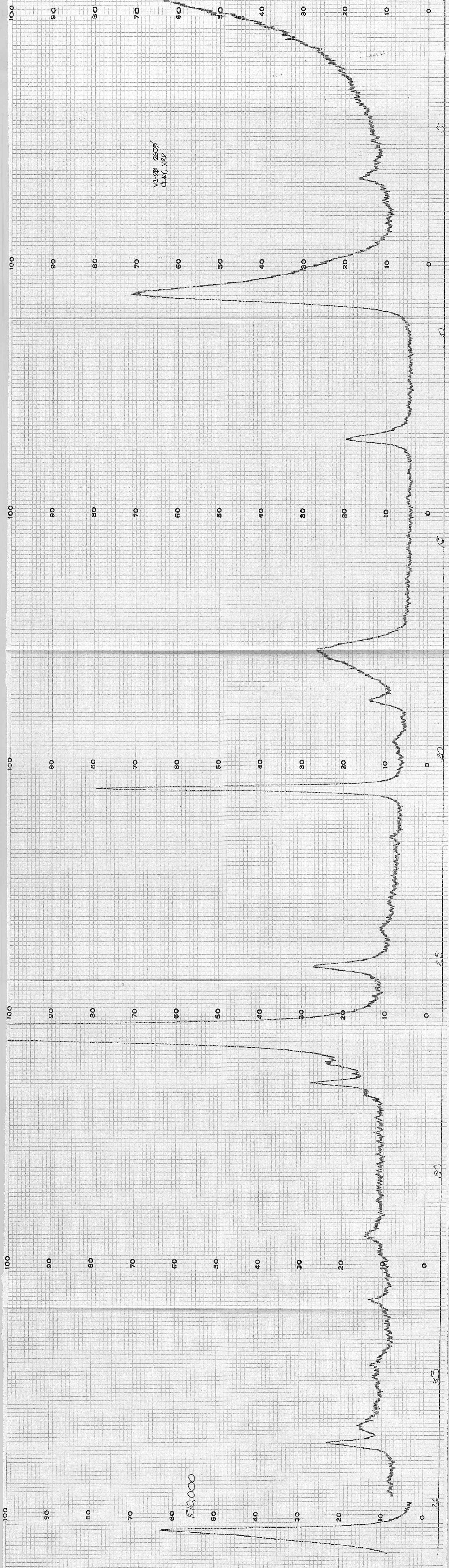
20

25

30

35

VC-DB 260F5
CLAY, XRD



R19000