

SUNOCO ENERGY  
DEVELOPMENT CO.  
GRASS VALLEY  
PERSHING COUNTY, NEVADA

LINE 3

SHOTPOINTS 101 TO 283

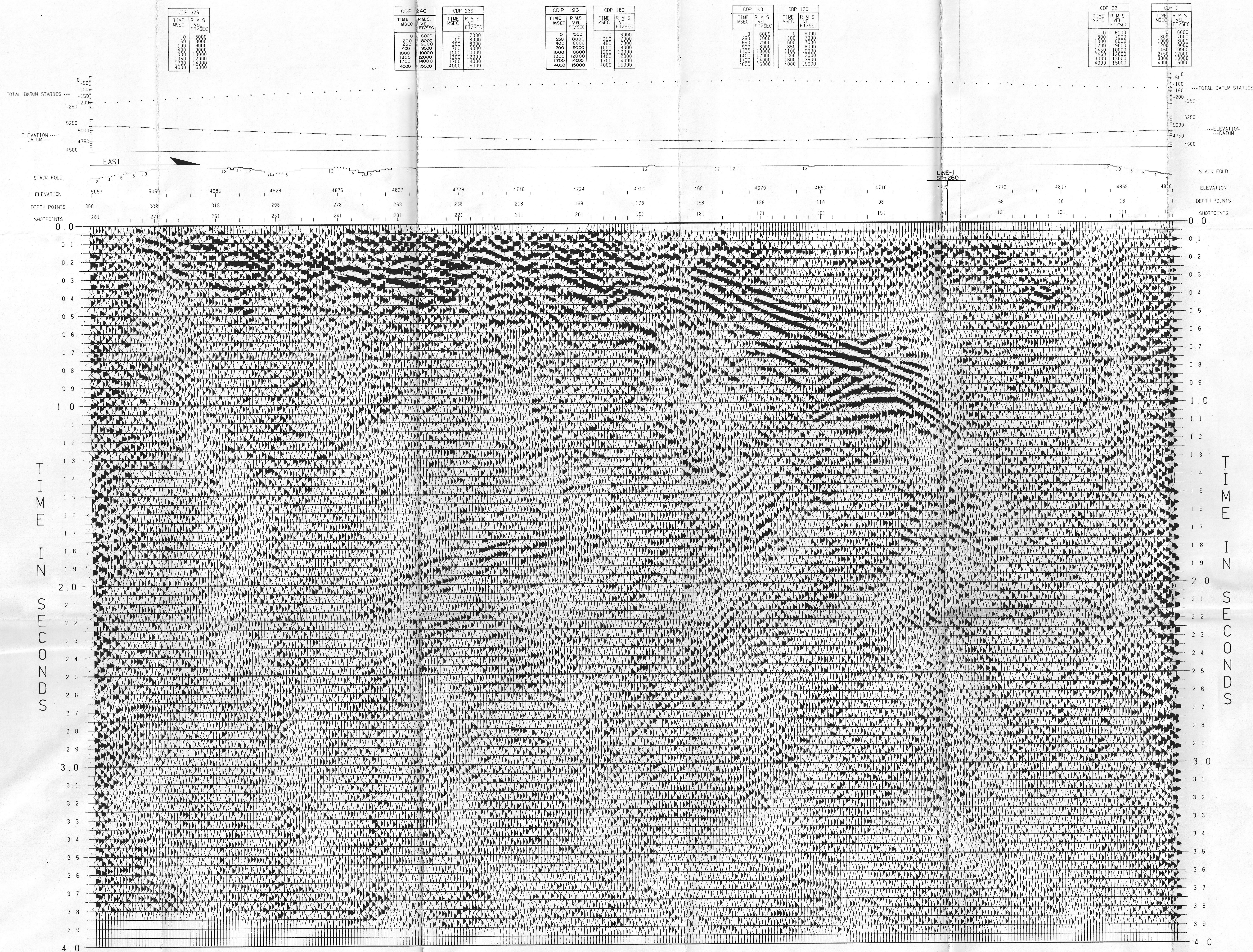
RELATIVE AMPLITUDE STACK

FIELD DATA

FIELD CREW GSI PARTY 1723  
DATE SHOT JULY 8 - 9, 1979  
ENERGY SOURCE VIBROSEIS  
SWEPT 12 HZ - 56 HZ  
NUMBER OF SWEEPS/VP 12  
VP INTERVAL 330 FT  
SOURCE ARRAY INLINE  
RECEIVER ARRAY INLINE  
NO. OF GEOPHONES/GROUP 24  
RECEIVER INTERVAL 165 FT  
SPREAD DIMENSIONS 4290-495-X-495-4290  
NUMBER OF TRACES 48  
RECORDING INSTRUMENTS DF-5 V  
RECORDING FILTERS LOW  
GAIN CONTROL HIGH  
SAMPLE RATE 4 MSEC  
RECORD LENGTH 16 SECONDS  
MULTIPLICITY 12 FOLD

DIGITAL PROCESSING

- VERTICAL STACK
- NUMBER OF SWEEPS(POPS) STACKED =
- STRAIGHT
- DIVERSITY GATE LENGTH = MSEC
- 1. CORRELATION
- MINIMUM PHASE X ZERO PHASE
- 2. CROOKED LINE PROCESSING
- SEARCH RADIUS = 248 FT
- MAXIMUM FOLD = 12
- 3. TRUE AMPLITUDE RECOVERY
- ALPHA = 6 DB/SEC TIME = 0 TO 3 SEC
- VELOCITY FILTER
- POSITIVE CUT FT/SEC
- NEGATIVE CUT FT/SEC
- 4. DECONVOLUTION
- OPERATOR SIGNATURE
- NUMBER OF OPERATORS = 3 GAPPED
- OPERATOR LENGTH = 256 MSEC
- WHITE NOISE LEVEL = 10 PERCENT
- GAP MIXING =
- 5. TIME VARIANT SCALING
- UNITY SCALARS X SQUARE ROOT SCALARS
- GATE LENGTH(S) MSEC 1000
- 6. DATUM STATICS APPLICATION
- DATUM = 4500 FT
- REPLACEMENT VELOCITY = 6000 FT/SEC
- 7. VELOCITY EVALUATION
- FUNCTIONS REFERENCED TO SURFACE
- NUMBER OF CDPS/LOCATION = 11
- NUMBER OF LOCATIONS = 4
- LOCATION SPACING = MILE(S)
- VELPAC VELSCAN X CVS
- TIME AND SPACE VARIANT GATES
- 9. RESIDUAL STATICS COMPUTATIONS
- TIME AND SPACE VARIANT GATES
- 8. VELOCITY EVALUATION
- FUNCTIONS REFERENCED TO DATUM
- NUMBER OF CDPS/LOCATION = 220
- NUMBER OF LOCATIONS = 1
- LOCATION SPACING = MILE(S)
- VELPAC VELSCAN CVS X
- 10. NORMAL MOVEOUT CORRECTIONS
- SEE VELOCITIES ANNOTATED ABOVE SECTION
- 11. CDP STACK SUPPRESSION RAMP
- OFFSET(FT) TIME(MSEC)
- 495 0
- 4290 700
- 12. COMMON DEPTH POINT STACK
- STACKING FOLD GRAPH ABOVE SECTION
- RECOVERY SCALING = UNITY X SORT
- 13. TIME VARIANT FILTERING
- PASSBAND(HZ) TIME(MSEC)
- 7-25 CDP ALL
- 14. TIME VARIANT SCALING
- UNITY SCALARS X SQUARE ROOT SCALARS
- GATE LENGTH(S) MSEC
- WAVE EQUATION MIGRATION
- DIP FILTER
- POSITIVE CUT = MSEC/TRACE
- NEGATIVE CUT = MSEC/TRACE
- 15. DISPLAY
- TRACES/INCH = 12 INCHES/SECOND = 5
- POLARITY NORMAL X REVERSED
- BIAS 10 PERCENT
- 14. RELATIVE AMPLITUDE STACK



GEOPHYSICAL SERVICE, INC.

(A SUBSIDIARY OF TEXAS INSTRUMENTS, INC.)

OCT 31, 1979  
DENVER CO

PROCESSING CHECKED BY