

SUNOCO ENERGY
DEVELOPMENT CO.
GRASS VALLEY
PERSHING COUNTY, NEVADA

LINE 4

SHOTPOINTS 101 TO 255

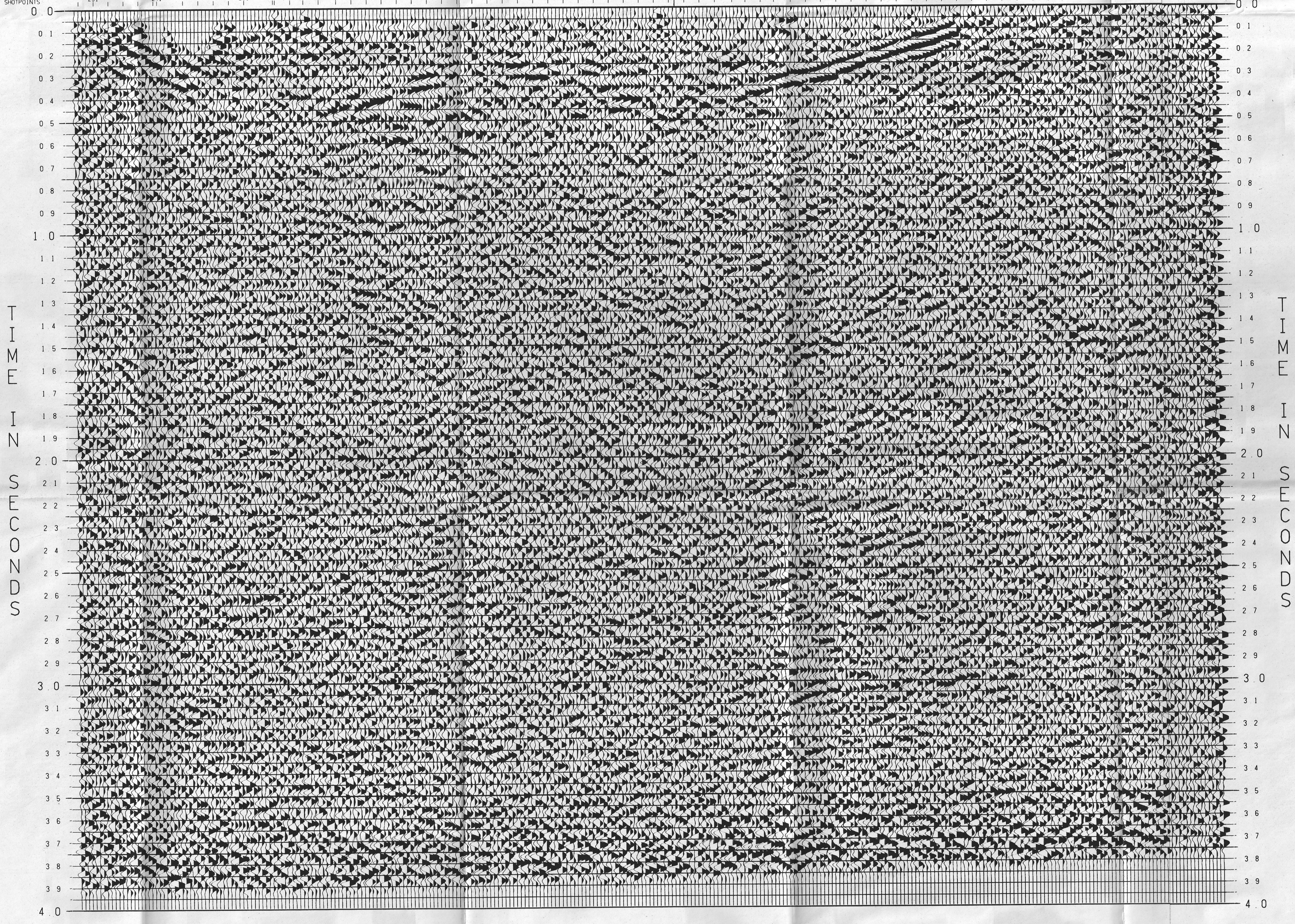
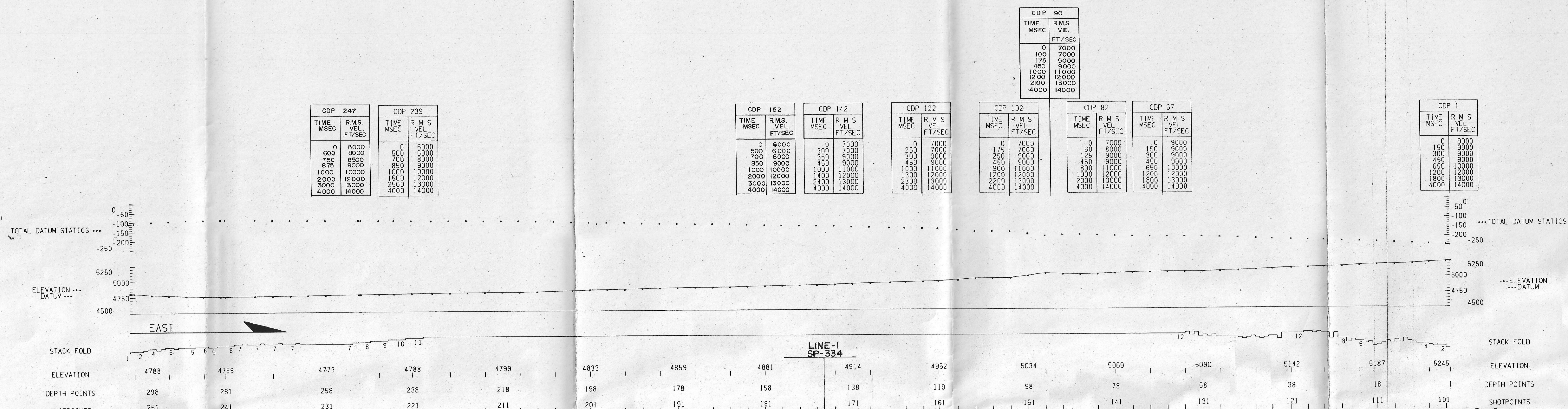
SCALED FINAL STACK

FIELD DATA

FIELD CREW GSI PARTY 1743
DATE SHOT JULY 11 1979
ENERGY SOURCE VIBROSEIS
SWEEP 12 HZ - 56 HZ
NUMBER OF SWEEPS/VP 330 FT
VP INTERVAL 12 HZ
SOURCE ARRAY INLINE
RECEIVER ARRAY INLINE
NO. OF GEOPHONES/GROUP 24
RECEIVER INTERVAL 165 FT
SPREAD DIMENSIONS 4290-495-X-495-4290
NUMBER OF TRACES 48
RECORDING INSTRUMENTS DFS V
RECORDING FILTERS LOW 8 HZ
HIGH 64 HZ
GAIN CONTROL
SAMPLE RATE 4 MSEC
RECORD LENGTH 16 SECONDS
MULTIPLICITY 12 FOLD

DIGITAL PROCESSING

- VERTICAL STACK
NUMBER OF SWEEPS(POPS) STACKED = ---
STRAIGHT
DIVERSITY --- GATE LENGTH = --- MSEC
- 1. CORRELATION
MINIMUM PHASE ZERO PHASE
- 2. CROOKED LINE PROCESSING
SEARCH RADIUS = 248 FT
MAXIMUM FOLD 12
- 3. TRUE AMPLITUDE RECOVERY
ALPHA = 6 DB/SEC TIME = 0. TO 3. SEC
- VELOCITY FILTER
POSITIVE CUT --- FT/SEC
NEGATIVE CUT --- FT/SEC
- 4. DECONVOLUTION
DESIGNATURE SPIKING X GAPPED ---
NUMBER OF OPERATORS 3
OPERATOR LENGTH = 256 MSEC
WHITE NOISE LEVEL = 10 PERCENT
CAP = MSEC NXING = ---
- 5. TIME VARIANT SCALING
UNITY SCALARS X SQUARE ROOT SCALARS ---
GATE LENGTH(S) MSEC 200
- 6. DATUM STATICS APPLICATION
DATUM = 4500 FT
REPLACEMENT VELOCITY = 6000 FT/SEC
- 7. VELOCITY EVALUATION
FUNCTIONS REFERENCED TO DATUM
NUMBER OF CDP'S/LOCATION = ENTIRELINE
NUMBER OF LOCATIONS = ALL
LOCATION SPACING = --- MILE(S)
VELPAC VELSCAN CVS X
- 8. RESIDUAL STATICS COMPUTATIONS
TIME AND SPACE VARIANT GATES
VELOCITY EVALUATION
FUNCTIONS REFERENCED TO
NUMBER OF CDP'S/LOCATION = ---
NUMBER OF LOCATIONS = ---
LOCATION SPACING = --- MILE(S)
VELPAC VELSCAN CVS ---
- 9. NORMAL MOVEOUT CORRECTIONS
SEE VELOCITIES ANNOTATED ABOVE SECTION
- 10. CDP STACK SUPPRESSION RAMP
OFFSET(FT) TIME(MSEC)
495 0
4290 700
- 11. COMMON DEPTH POINT STACK
STACKING FOLD GRAPH ABOVE SECTION
RECOVERY SCALING = UNITY X SORT ---
- 12. TIME VARIANT FILTERING
PASSBAND(HZ) TIME(MSEC)
7-25 CDP ALL
- 13. TIME VARIANT SCALING
UNITY SCALARS X SQUARE ROOT SCALARS ---
GATE LENGTH(S) MSEC 500
- WAVE EQUATION MIGRATION
DIP FILTER
POSITIVE CUT = --- MSEC/TRACE
NEGATIVE CUT = --- MSEC/TRACE
- 14. DISPLAY
TRACES/INCH = 12 INCHES/SECOND = 5
POLARITY NORMAL X REVERSED ---
BIAS 10 PERCENT



GEOPHYSICAL SERVICE INC

(A SUBSIDIARY OF TEXAS INSTRUMENTS INC.)

OCT 31 1979
DENVER CO

PROCESSING CHECKED BY