

SUNOCO ENERGY  
DEVELOPMENT CO.  
GRASS VALLEY  
PERSHING COUNTY, NEVADA

LINE 2

SHOTPOINTS 101 TO 299

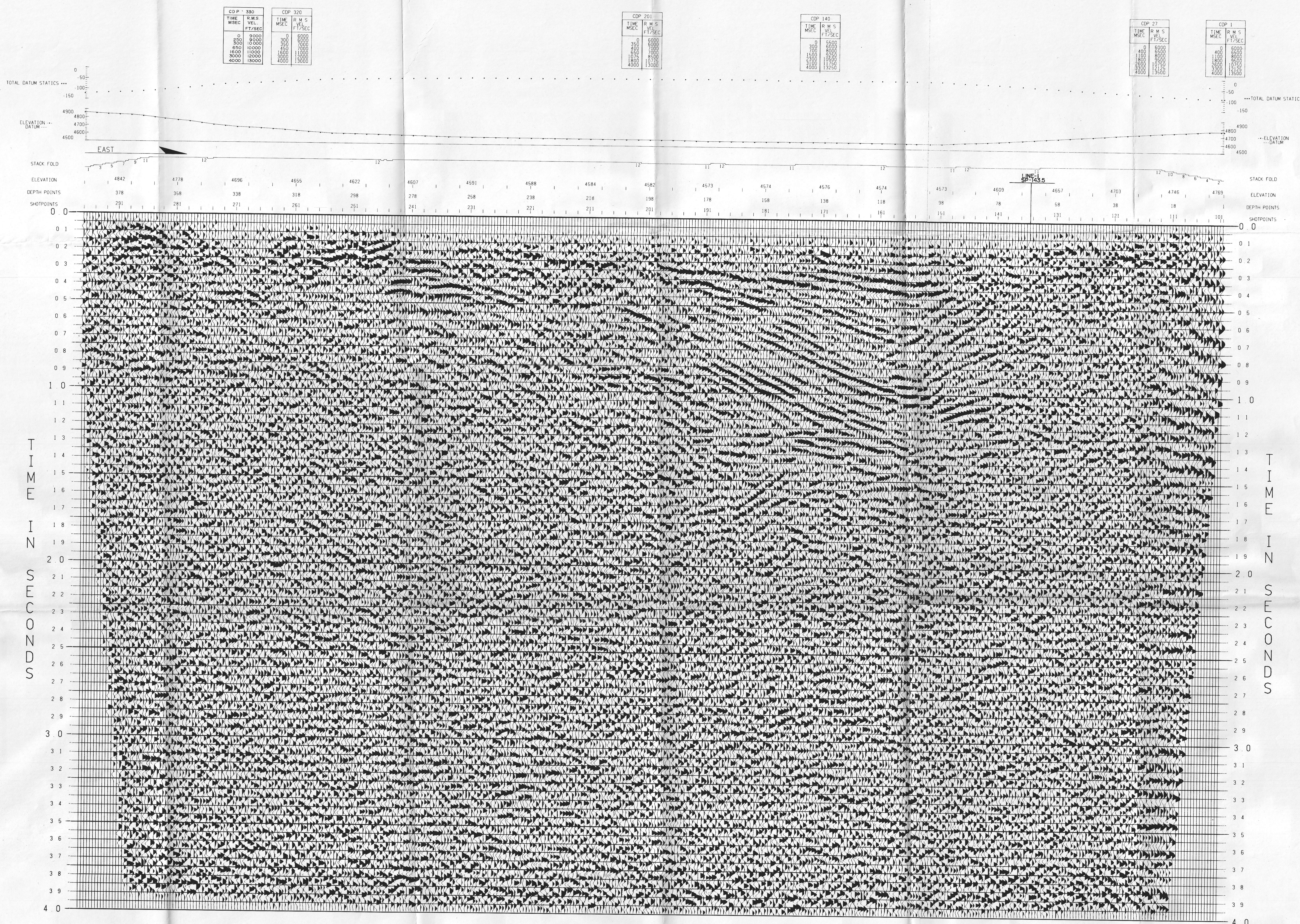
SCALED FINAL STACK

FIELD DATA

FIELD CREW CSI PARTY 1743  
DATE SHOT JULY 8, 1979  
ENERGY SOURCE VIBROSEIS  
SWEEP 12 HZ - 56 HZ  
NUMBER OF SWEEPS/VP 7  
VP INTERVAL 330 FT  
SOURCE ARRAY IN LINE  
RECEIVER ARRAY IN LINE  
NO. OF GEOPHONES/GROUP 24  
RECEIVER INTERVAL 165 FT  
SPREAD DIMENSIONS 4290-495-X-495-4290  
NUMBER OF TRACES 48  
RECORDING INSTRUMENTS DFS V  
RECORDING FILTERS LOW  
GAIN CONTROL HIGH 64 HZ  
SAMPLE RATE 4 MSEC  
RECORD LENGTH 16 SECONDS  
MULTIPLICITY 12 FOLD

DIGITAL PROCESSING

- 1. VERTICAL STACK  
NUMBER OF SWEEPS(POPS) STACKED = ---  
STRAIGHT  
DIVERSITY --- GATE LENGTH = --- MSEC
- 2. CORRELATION  
MINIMUM PHASE ZERO PHASE ---  
CROOKED LINE PROCESSING  
SEARCH RADIUS = --- FT  
MAXIMUM FOLD ---
- 3. TRUE AMPLITUDE RECOVERY  
ALPHA = 8 DB/SEC TIME = 0 TO 3 SEC  
VELOCITY FILTER  
POSITIVE CUT --- FT/SEC  
NEGATIVE CUT --- FT/SEC
- 4. DECONVOLUTION  
DESIGNATION SPIKING X GAPPED  
NUMBER OF OPERATORS = 3  
OPERATOR LENGTH = 256 MSEC  
WHITE NOISE LEVEL 5 TO PERCENT  
GAP = MSEC NXING = ---
- 5. TIME VARIANT SCALING  
UNITY SCALARS X SQUARE ROOT SCALARS  
GATE LENGTH(S) MSEC 200
- 6. DATUM STATICS APPLICATION  
DATUM 4500 FT  
REPLACEMENT VELOCITY = 6000 FT/SEC
- 7. VELOCITY EVALUATION  
FUNCTIONS REFERENCED TO SURFACE  
NUMBER OF CDP'S/LOCATION = 11  
NUMBER OF LOCATIONS = 4  
LOCATION SPACING = --- MILE(S)  
VELPAC = VELSCAN X CVS ---  
TIME AND SPACE VARIANT GATES
- 8. RESIDUAL STATICS COMPUTATIONS  
TIME AND SPACE VARIANT GATES  
VELOCITY EVALUATION  
FUNCTIONS REFERENCED TO DATUM  
NUMBER OF CDP'S/LOCATION = 190  
NUMBER OF LOCATIONS = 4  
LOCATION SPACING = --- MILE(S)  
VELPAC = VELSCAN CVS X
- 9. NORMAL MOVEOUT CORRECTIONS  
SEE VELOCITIES ANNOTATED ABOVE SECTION
- 10. CDP STACK SUPPRESSION RAMP  
OFFSET(FT) TIME(MSEC)  
CDP 495 0  
4290 800
- 11. COMMON DEPTH POINT STACK  
STACKING FOLD GRAPH ABOVE SECTION  
RECOVERY SCALING = UNITY X SORT ---
- 12. TIME VARIANT FILTERING  
PASSBAND(HZ) TIME(MSEC)  
CDP 7-25 ALL
- 13. TIME VARIANT SCALING  
UNITY SCALARS X SQUARE ROOT SCALARS  
GATE LENGTH(S) MSEC 500  
WAVE EQUATION MIGRATION  
DIP FILTER  
POSITIVE CUT = --- MSEC/TRACE  
NEGATIVE CUT = --- MSEC/TRACE
- 14. DISPLAY  
TRACES/INCH = 12 INCHES/SECOND = 5  
POLARITY NORMAL X REVERSED ---  
BIAS 10 PERCENT



GEOPHYSICAL SERVICE INC

(A SUBSIDIARY OF TEXAS INSTRUMENTS INC.)

OCT 31, 1979  
DENVER CO

PROCESSING CHECKED BY