

SUNOCO ENERGY
DEVELOPMENT CO
GRASS VALLEY
PERSHING COUNTY, NEVADA

LINE 2

SHOTPOINTS 101 TO 299

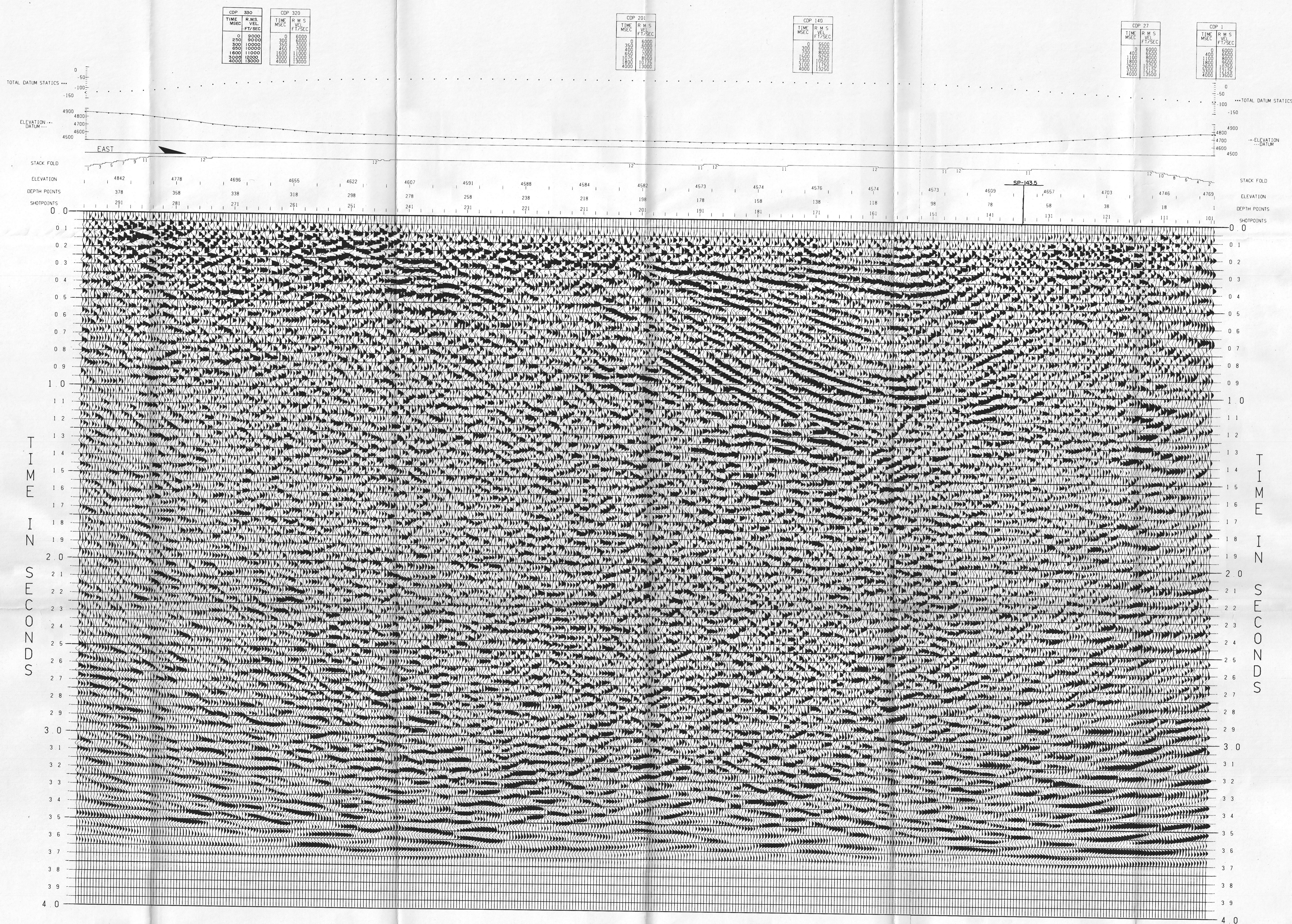
MIGRATED FINAL STACK

FIELD DATA

FIELD CREW GSI PARTY 1743
DATE SHOT JULY 7 - 8, 1979
ENERGY SOURCE VIBROSETS
SWEEP 12 HZ - 56 HZ
NUMBER OF SWEEPS/VP 12
VP INTERVAL 330 FT
SOURCE ARRAY INLINE
RECEIVER ARRAY INLINE
NO. OF GEOPHONES/GROUP 24
RECEIVED INTERVAL 165 FT
SPREAD DIMENSIONS 4290-495-X-495-4290
NUMBER OF TRACES 48
RECORDING INSTRUMENTS DFS-V
RECORDING FILTERS LOW
GAIN CONTROL HIGH
SAMPLE RATE 4 MSEC
RECORD LENGTH 16 SECONDS
MULTIPLICITY 12 FOLD

DIGITAL PROCESSING

- 1. VERTICAL STACK
NUMBER OF SWEEPS(POPS) STACKED = ---
STRAIGHT
DIVERSITY --- GATE LENGTH = --- MSEC
- 2. CORRELATION
MINIMUM PHASE ZERO PHASE ---
CROOKED LINE PROCESSING
SEARCH RADIUS = --- FT
MAXIMUM FOLD = ---
- 3. TRUE AMPLITUDE RECOVERY
ALPHA = 6 DB/SEC TIME = 0 TO 3 SEC
VELOCITY FILTER
POSITIVE CUT --- FT/SEC
NEGATIVE CUT --- FT/SEC
- 4. DECONVOLUTION
DESIGNATURE SPIKING GAPPED ---
NUMBER OF OPERATORS = 3
OPERATOR LENGTH = 256 MSEC
WHITE NOISE LEVEL = 10 PERCENT
GAP = N XING = ---
- 5. TIME VARIANT SCALING
UNITY SCALARS SQUARE ROOT SCALARS ---
GATE LENGTH(S) MSEC = 200
- 6. DATUM STATISTICS APPLICATION
DATUM = 4500 FT
REPLACEMENT VELOCITY = 6000 FT/SEC
- 7. VELOCITY EVALUATION
FUNCTIONS REFERENCED TO SURFACE
NUMBER OF CDPS/LOCATION = 11
NUMBER OF LOCATIONS = 4
LOCATION SPACING = --- MILE(S)
- 8. VELPAC VELSCAN CVS ---
RESIDUAL STATISTICS COMPUTATIONS
TIME AND SPACE VARIANT GATES
- 9. VELOCITY EVALUATION
FUNCTIONS REFERENCED TO DATUM
NUMBER OF CDPS/LOCATION = 190
NUMBER OF LOCATIONS = 4
LOCATION SPACING = --- MILE(S)
- 10. VELPAC VELSCAN CVS
NORMAL MOVEOUT CORRECTIONS
SEE VELOCITIES ANNOTATED ABOVE SECTION
CDP STACK SUPPRESSION RAMP
OFFSET(FT) TIME(MSEC)
- 11. COMMON DEPTH POINT STACK
STACKING FOLD GRAPH ABOVE SECTION
RECOVERY SCALING = UNITY SORT
- 12. TIME VARIANT FILTERING
PASSBAND(CHZ) CDP TIME(MSEC)
- 13. 7-25
- 14. TIME VARIANT SCALING
UNITY SCALARS SQUARE ROOT SCALARS ---
GATE LENGTH(S) MSEC = 3000
- 15. WAVE EQUATION MIGRATION
DIP FILTER
POSITIVE CUT = --- MSEC/TRACE
NEGATIVE CUT = --- MSEC/TRACE
- 16. DISPLAY
TRACES/INCH = 12 INCHES/SECOND = 5
POLARITY NORMAL REVERSED ---
BIAS 10 PERCENT



GEOPHYSICAL SERVICE INC

(A SUBSIDIARY OF TEXAS INSTRUMENTS INC.)
OCT 31 1979
DENVER CO
PROCESSING CHECKED BY