

SUNOCO ENERGY
DEVELOPMENT CO.
GRASS VALLEY
PERSHING COUNTY, NEVADA

LINE 2

SHOTPOINTS 101 TO 299

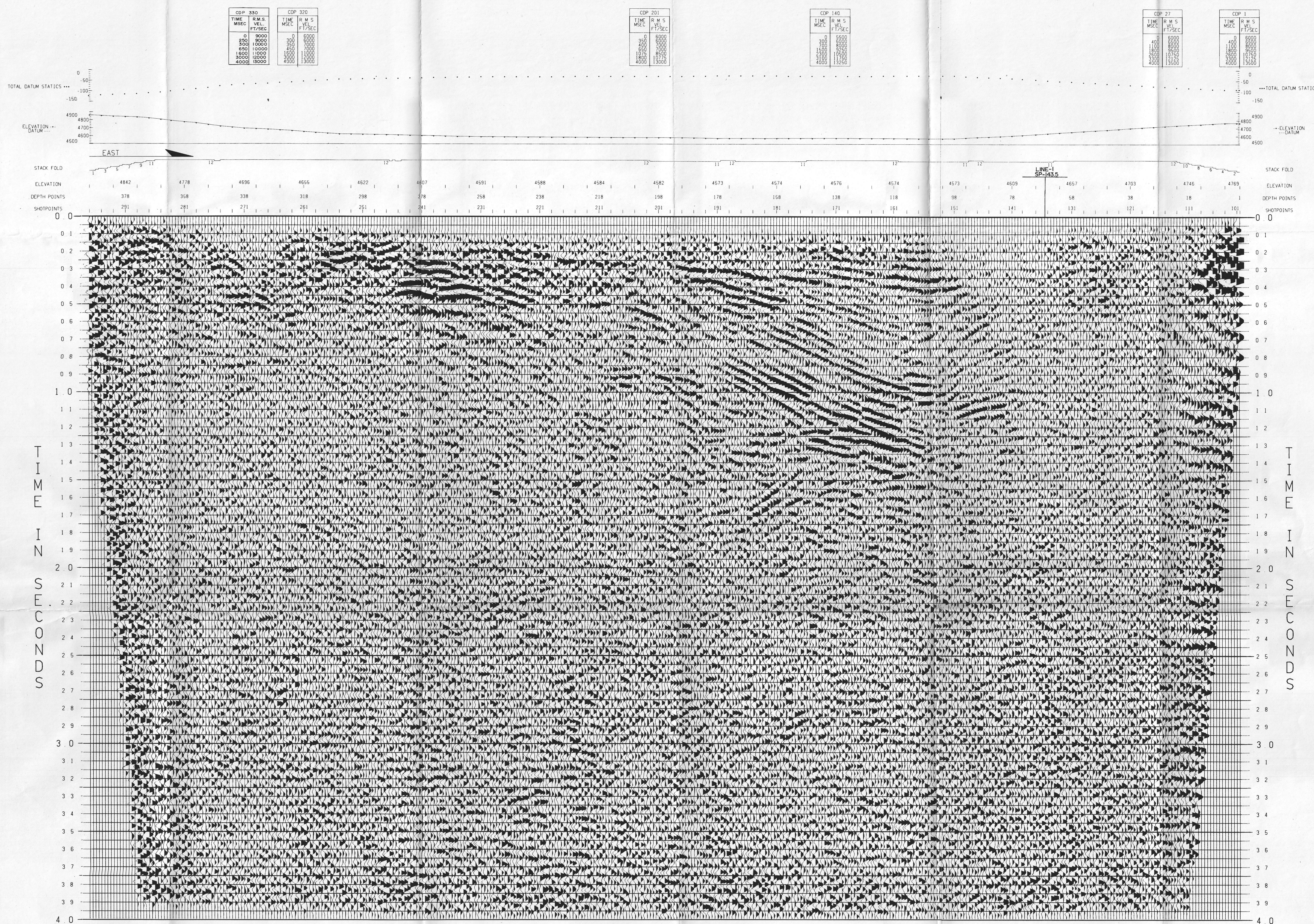
RELATIVE AMPLITUDE STACK

FIELD DATA

FIELD CREW GSI PARTY 1743
DATE SHOT JULY 7 - 8 1979
ENERGY SOURCE VIBROSETS
SWEEP 12 HZ - 56 HZ
NUMBER OF SWEEPS/VP 12
VP INTERVAL 330 FT
SOURCE ARRAY INLINE
RECEIVER ARRAY INLINE
NO. OF GEOPHONES/GROUP 24
RECEIVER INTERVAL 165 FT
SPREAD DIMENSIONS 4290-495-X-495-4290
NUMBER OF TRACES 48
RECORDING INSTRUMENTS DFS V
RECORDING FILTERS LOW 8 HZ
HIGH 64 HZ
GAIN CONTROL HIGH
SAMPLE RATE 4 MSEC
RECORD LENGTH 16 SECONDS
MULTIPLICITY 12 FOLD

DIGITAL PROCESSING

- 1. VERTICAL STACK
NUMBER OF SWEEPS(POPS) STACKED =
STRAIGHT
DIVERSITY --- GATE LENGTH = --- MSEC
 - 2. CORRELATION
MINIMUM PHASE ZERO PHASE ---
 - 3. CROOKED LINE PROCESSING
SEARCH RADIUS = 330 FT
MAXIMUM FOLD = 12
 - 4. TRUE AMPLITUDE RECOVERY
ALPHA = 6 DB/SEC TIME = 0. TO 3. SEC
VELOCITY FILTER
POSITIVE CUT --- FT/SEC
NEGATIVE CUT --- FT/SEC
 - 5. DECONVOLUTION
DESIGNATURE SPIKING GAPPED
NUMBER OF OPERATORS 3
OPERATOR LENGTH = 256 MSEC
WHITE NOISE LEVEL = 10 PERCENT
GAP = --- MSEC NXING = ---
 - 6. TIME VARIANT SCALING
UNITY SCALARS SQUARE ROOT SCALARS ---
GATE LENGTH(S) MSEC 1000
 - 7. DATUM STATICS APPLICATION
DATUM = 4500 FT
REPLACEMENT VELOCITY = 6000 FT/SEC
 - 8. VELOCITY EVALUATION
FUNCTIONS REFERENCED TO DATUM
NUMBER OF CDPS/LOCATION = ENTIRE LINE
NUMBER OF LOCATIONS = ALL
LOCATION SPACING = --- MILES(S)
VELSCAN VELSCAN CVS
TIME AND SPACE VARIANT GATES
RESIDUAL STATICS COMPUTATIONS
TIME AND SPACE VARIANT GATES
 - 9. VELOCITY EVALUATION
FUNCTIONS REFERENCED TO
NUMBER OF CDPS/LOCATION =
NUMBER OF LOCATIONS =
LOCATION SPACING = --- MILES(S)
VELSCAN VELSCAN CVS ---
 - 10. NORMAL MOVEOUT CORRECTIONS
SEE VELOCITIES ANNOTATED ABOVE SECTION
CDP STACK SUPPRESSION RAMP
OFFSET(FT) CDP TIME(MSEC)
- | | | | |
|------|-----|-----|-----|
| 495 | 200 | --- | --- |
| 4290 | 800 | --- | --- |
- 11. COMMON DEPTH POINT STACK
STACKING FOLD GRAPH ABOVE SECTION
RECOVERY SCALING = UNITY --- SQRT
 - 12. TIME VARIANT FILTERING
PASSBAND(HZ) CDP TIME(MSEC)
- | | | | |
|------|-----|-----|-----|
| 7-25 | ALL | --- | --- |
|------|-----|-----|-----|
- 13. TIME VARIANT SCALING
UNITY SCALARS SQUARE ROOT SCALARS ---
GATE LENGTH(S) MSEC
WAVE EQUATION MIGRATION
DIP FILTER
POSITIVE CUT = --- MSEC/TRACE
NEGATIVE CUT = --- MSEC/TRACE
 - 14. DISPLAY
TRACES/INCH = 12 INCHES/SECOND = 5
POLARITY NORMAL REVERSED ---
BIAS 10 PERCENT
 - 15. RELATIVE AMPLITUDE STACK



GEOPHYSICAL SERVICE INC

(A SUBSIDIARY OF TEXAS INSTRUMENTS INC.)

OCT 30 1979
DENVER CO

PROCESSING CHECKED BY

TDSP 02-001 SUNLINE2

02NOV79 05 44 25 100

TDSP 02-002 SUNLINE2