

GL 01726-2

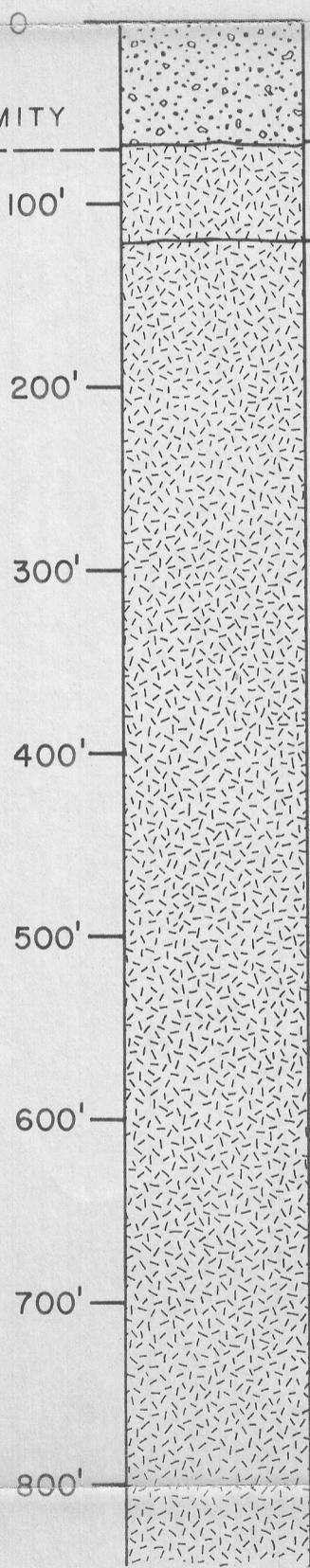
PLIOCENE (?)

COLLAR ELEVATION = 4850'

CRETACEOUS

UNCONFORMITY

FEET BELOW SURFACE



0-67' = HYDROTHERMALLY ALTERED ALLUVIUM: PRE-LOUSETOWN PEDIMENT GRAVELS ALTERED TO WHITE, RED, AND YELLOW CLAYS.

67'-120' = GRANODIORITE (?): INTENSELY HYDROTHERMALLY ALTERED WHITE IGNEOUS ROCK WITH QUARTZ, FELDSPAR, AND UBIQUITOUS PYRITE.

120'-844' = GRANODIORITE: RELATIVELY FRESH WITH SOME FRACTURES AND SOME ALTERATION TO PYRITE AND CHLORITE; PYRITE AND CHLORITE OFTEN ASSOCIATED WITH BIOTITE; PYRITE VERY FINE AND GENERALLY DISSEMINATED; INTENSITY OF ALTERATION INCREASES WITH DEPTH.

TOTAL DEPTH = 844'

## LITHOLOGIC LOG OF STEAMBOAT SPRINGS STRATIGRAPHIC TEST NO. 2

LOCATION: 210' SOUTH OF THE NORTH LINE AND 2370' WEST OF THE EAST LINE OF SECTION 32, T.18 N., R.20 E., WASHOE COUNTY, NEVADA.

DATE STARTED: OCTOBER 7, 1977

DATE COMPLETED: OCTOBER 18, 1977