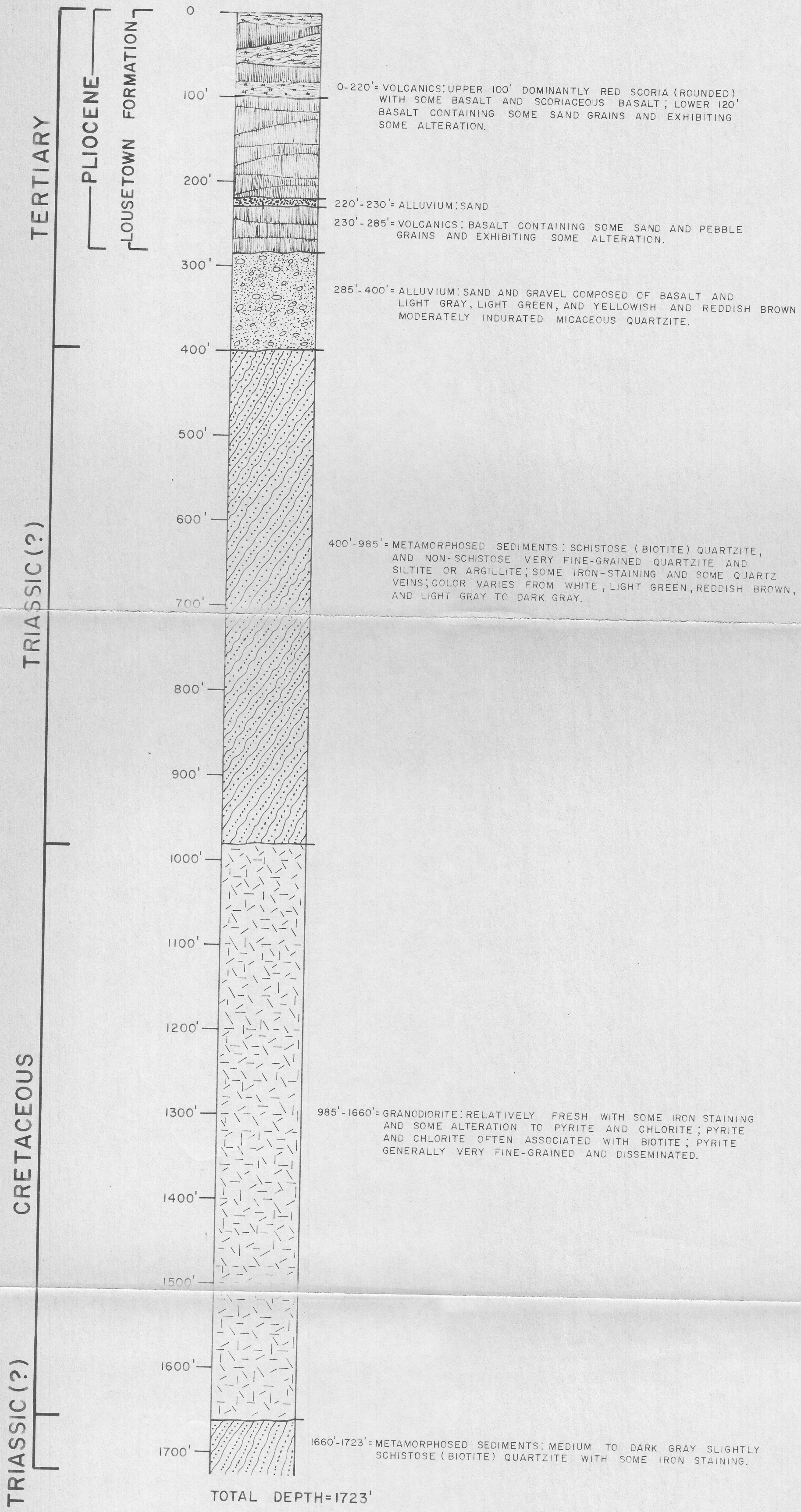


COLLAR ELEVATION = 5690'



LITHOLOGIC LOG OF STEAMBOAT SPRINGS
STRATIGRAPHIC TEST NO. 3

LOCATION: 359' SOUTH OF THE NORTH LINE AND 690' EAST OF THE WEST LINE OF SECTION 5, T.17 N., R.20 E., WASHOE COUNTY, NEVADA

DATE STARTED: OCTOBER 24, 1977

DATE COMPLETED: NOVEMBER 21, 1977