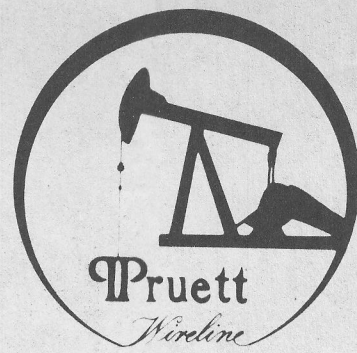


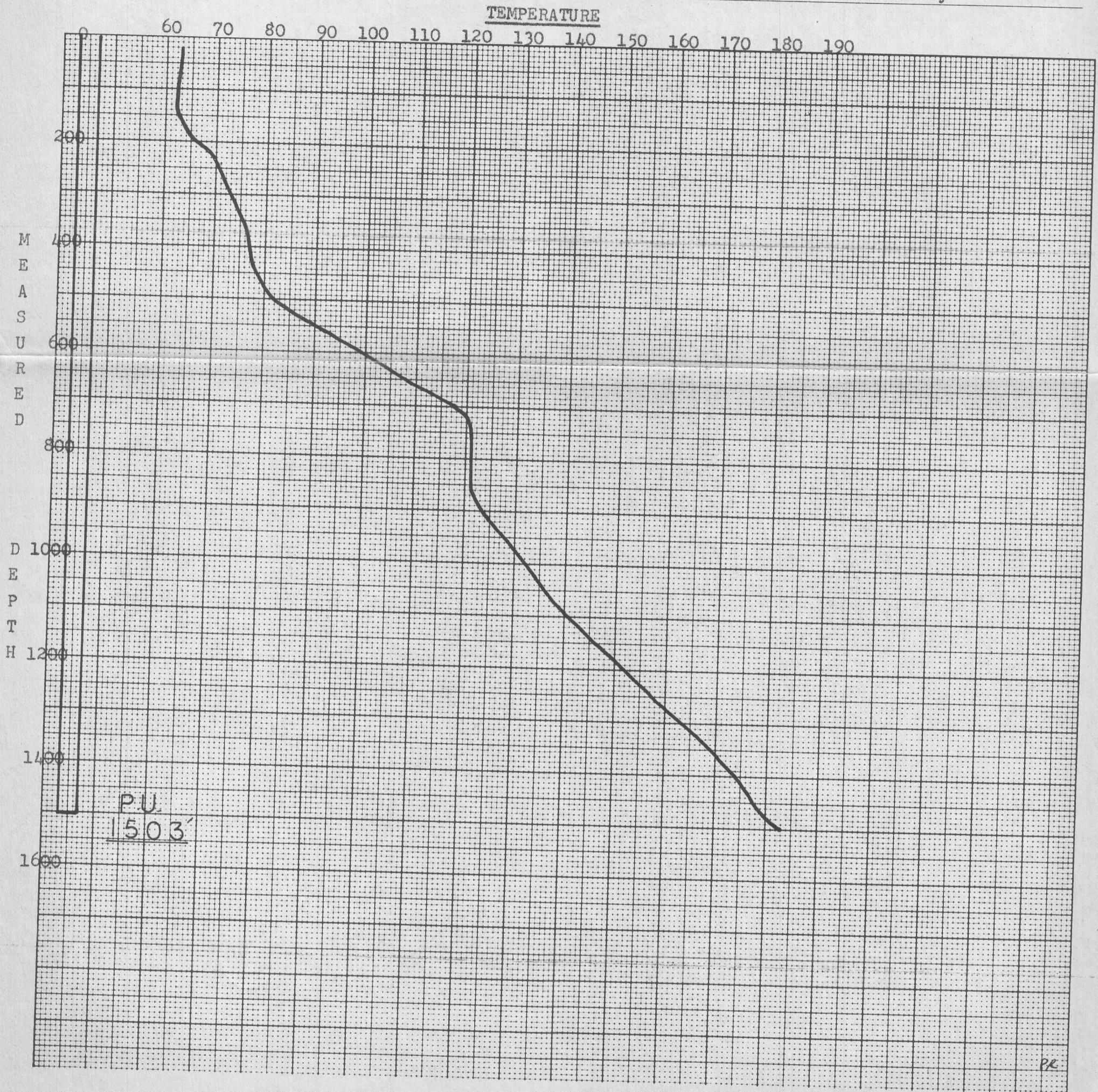
PRUETT WIRELINE SERVICE

8915 ROSEDALE HWY., BAKERSFIELD, CA 93308
(805) 589-2768



SUB-SURFACE TEMPERATURE SURVEY

COMPANY Phillips FIELD Steamboat Valley WELL NAME Strat 7
 NEW 7 T 17 NR 20 E
 TOTAL DEPTH --- WELL STATUS Static BOMB HUNG @ none DATE May 29, 1980
 CASING --- CASING PRESSURE --- TIME ON BOTTOM 8:55pm ELEMENT RANGE 44-482°
 LINER --- TUBING PRESSURE --- TIME OFF BOTTOM 9:00pm ZERO POINT 0 at valve
 PERFORATIONS --- ZONE --- SHUT IN --- ELEVATION ---
 MPP --- MAX. °F. 183.15° ON PRODUCTION --- PICKUP 1503'
 TUBING DETAIL 2 7/8" @ 1503' PURPOSE Traverse Temperature Survey



SURVEY DATA

| DEPTH | TEMPERATURE | DEPTH | TEMPERATURE | DEPTH | TEMPERATURE | DEPTH | TEMPERATURE |
|-------|-------------|-------|-------------|-------|-------------|-------|-------------|
| 20 | 62.75 | 400 | 77.15 | 780 | 121.22 | 1160 | 147.84 |
| 40 | 62.75 | 420 | 77.58 | 800 | 121.22 | 1180 | 150.02 |
| 60 | 62.53 | 440 | 77.80 | 820 | 121.22 | 1200 | 151.98 |
| 80 | 62.53 | 460 | 78.89 | 840 | 121.22 | 1220 | 154.16 |
| 100 | 62.31 | 480 | 80.20 | 860 | 121.22 | 1240 | 156.35 |
| 120 | 62.31 | 500 | 81.95 | 880 | 122.31 | 1260 | 158.67 |
| 140 | 62.31 | 520 | 85.22 | 900 | 123.62 | 1280 | 160.77 |
| 160 | 63.18 | 540 | 88.05 | 920 | 125.36 | 1300 | 163.07 |
| 180 | 64.49 | 560 | 91.98 | 940 | 127.33 | 1320 | 165.79 |
| 200 | 66.02 | 580 | 95.47 | 960 | 129.07 | 1340 | 168.09 |
| 220 | 68.86 | 600 | 99.40 | 980 | 130.60 | 1360 | 170.18 |
| 240 | 70.16 | 620 | 102.67 | 1000 | 131.91 | 1380 | 172.27 |
| 260 | 71.25 | 640 | 106.38 | 1020 | 134.09 | 1400 | 173.95 |
| 280 | 71.91 | 660 | 109.65 | 1040 | 135.18 | 1420 | 175.41 |
| 300 | 73.44 | 680 | 113.80 | 1060 | 136.93 | 1440 | 176.87 |
| 320 | 74.31 | 700 | 117.73 | 1080 | 138.45 | 1460 | 178.13 |
| 340 | 75.40 | 720 | 119.91 | 1100 | 141.07 | 1480 | 180.01 |
| 360 | 76.27 | 740 | 120.78 | 1120 | 143.25 | 1503 | 183.15 |
| 380 | 76.71 | 760 | 121.22 | 1140 | 145.44 | | |

Survey traversed 20' per minute.

C Skenfield