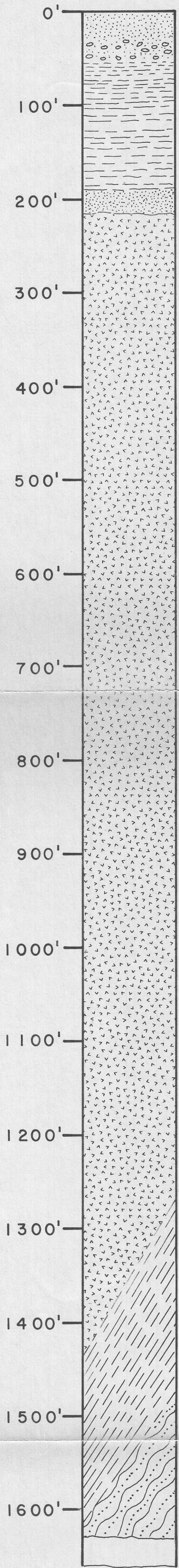


QUATERNARY

TERTIARY

TRIASSIC(?)

FEET BELOW SURFACE



0-215' = ALLUVIUM: GRAVEL, SAND AND TAN, GRAY AND BROWNISH-GRAY SILT AND CLAY.

215-1360' = RHYOLITE: PINK TO LIGHT AND MEDIUM GRAY WITH QUARTZ, FELDSPAR, HORNBLLENDE AND PYROXENE (POSSIBLY AUGITE). SOME IRON STAINING; POSSIBLE CINNABAR. 710-765' VESICULAR RHYOLITE AS ABOVE.

1360-1550' = FAULT ZONE

1550-1630' = METAMORPHOSED SEDIMENTARY ROCKS. DARK GRAY SILTITE AND VERY FINE-GRAINED QUARTZITE.

1630-1660' = NO RETURNS

TOTAL DEPTH = 1660'

LITHOLOGIC LOG OF STEAMBOAT SPRINGS
STRATIGRAPHIC TEST NO. 7

LOCATION: 1205' SOUTH OF THE NORTH LINE AND 2435' EAST OF THE WEST LINE OF SECTION 7, T17N R 20E, WASHOE COUNTY, NEVADA

DATE STARTED: JANUARY 15, 1980

DATE COMPLETED: FEBRUARY 16, 1980