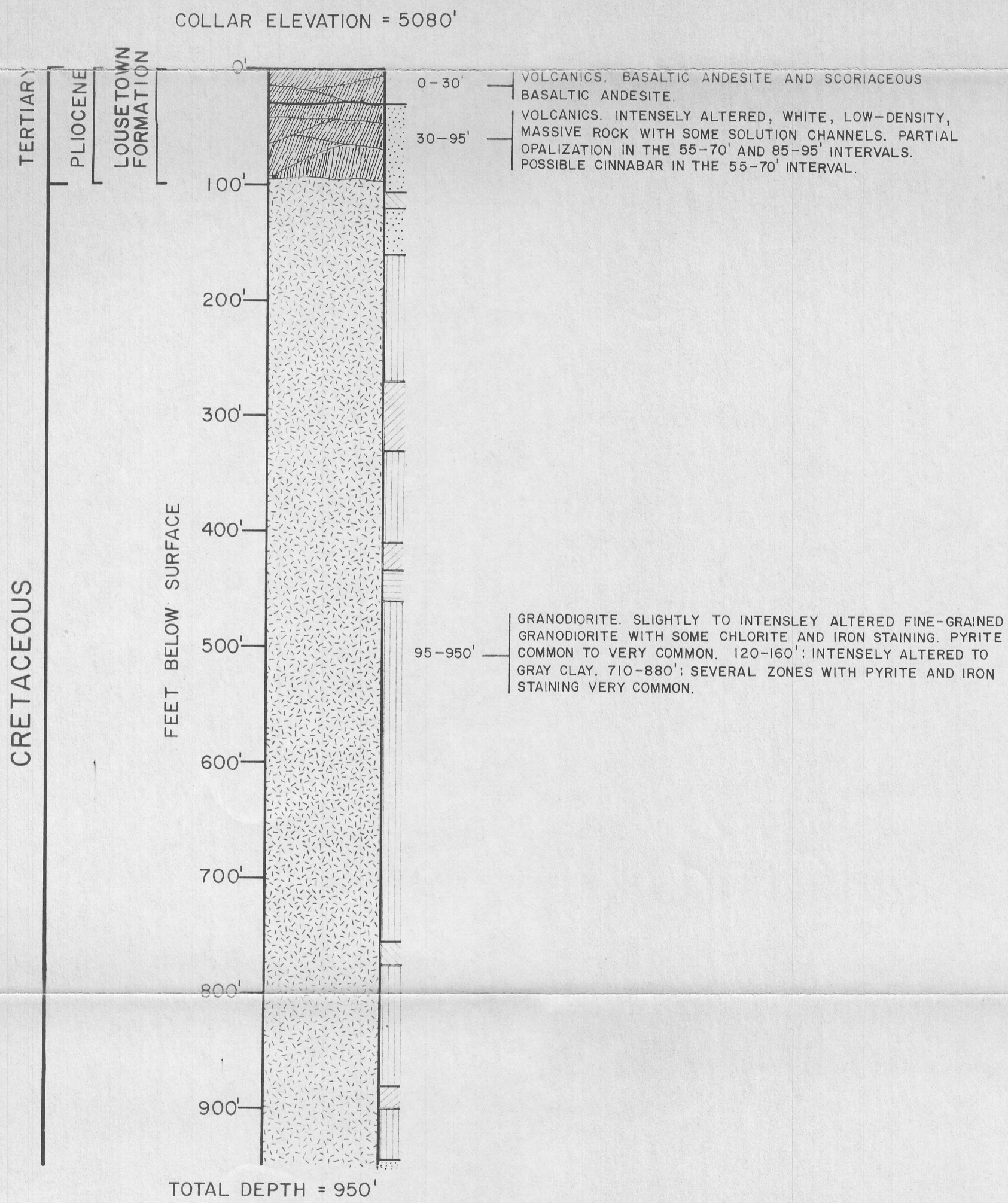







GL04733-2



-  SLIGHTLY ALTERED
-  SLIGHTLY TO MODERATELY ALTERED
-  MODERATELY ALTERED
-  MODERATELY TO INTENSELY ALTERED
-  INTENSELY ALTERED

LITHOLOGIC LOG OF STEAMBOAT SPRINGS  
STRATIGRAPHIC TEST NO. 9

LOCATION: 1875' WEST OF THE EAST LINE AND 2450' NORTH  
OF THE SOUTH LINE OF SECTION 32, T18N, R20E,  
WASHOE COUNTY, NEVADA

DATE STARTED: MAY 5, 1980

DATE COMPLETED: MAY 19, 1980