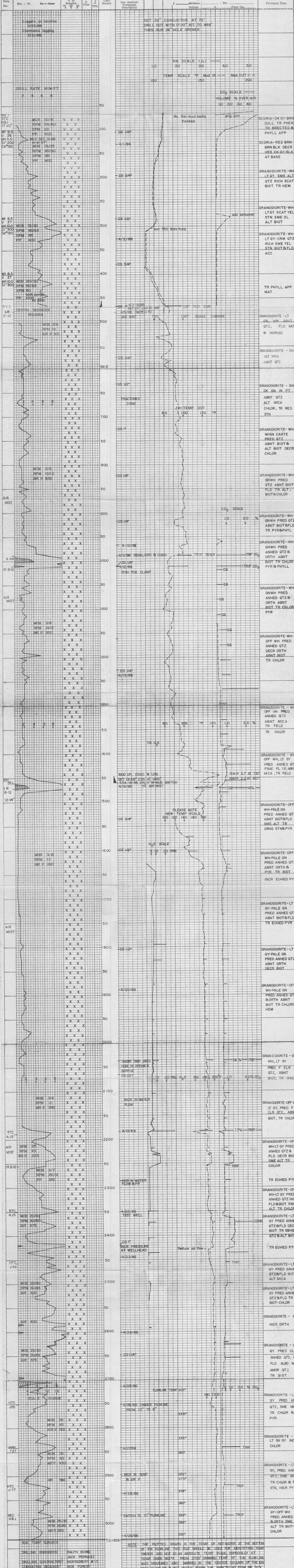


# TOOKE ENGINEERING

P.O. BOX 3200  
CASPER, WYOMING

COMPANY: PHILLIPS PETROLEUM  
WELL: STEAMBOAT SPRINGS UNIT 28-32  
SEC. 32 T. 18 N. R. 20 E  
COUNTY: WASHOE STATE: NEVADA  
SUPERVISOR: JARAMAN, BAILEY  
UNT: T-162 DATE:

WL Via FC pH CI	LAT-Logged After Trip CO-Circulated Out NO-No Returns DST-Drill Stem Test NB-New Bit	SAND LIME SHALE VOLCANICS	SALT DOLOMITE SILTSTONE ANHYDRITE	M.M. METASEDIMENTS X.X. INTRUSIVES	GL 5594 KB 5621.7	919.7' FWL 552.2' FSL
-----------------------------	--	------------------------------------	--	---------------------------------------	----------------------	--------------------------



NOTE: THE PLOTTED GRAPH IS THE TEMP OF HOT WATER AT THE BOTTOM OF THE FLOWLINE. THIS PLOT SHOULD BE USED FOR IDENTIFYING TEMP TRENDS AND NOT AS AN ABSOLUTE TEMP SCALE ESPECIALLY AT TEMP OVER 180°F FROM 2700 ONWARD TEMP OF THE FLOWLINE WAS MEASURED AND MARKED IN THE CENTER COLUMN OF THE LOG BOTH FLOWLINE & HOT WATER TEMPS ARE AFFECTED BY FLOWLINE SIZE.

TOOKE INTERNATIONAL RELEASED ON 4/30/86