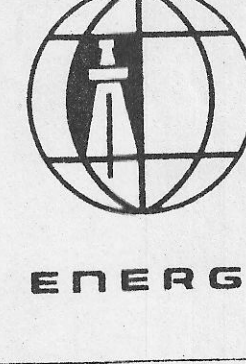


PHILLIPS PETROLEUM COMPANY
COMPANY Steamboat Springs No. 1
WELL Steamboat Springs Geothermal
FIELD Sec. 5, T17N-R20E, MDB&M
LOCATION NW 1/4 of NW 1/4 of NW 1/4
COUNTY Washoe STATE Nevada
ELEVATION 5713' K.B. 5690' C. 1.
API WELL INDEX NO.
LOG DATE 6/5/79 TIME 6:00 PM
SPUD DATE 6/6/79 TO 7/15/79
LOG DEPTHS 56' TO 3075'
LOGGING GEOLOGISTS Ross Brunetti Karl Anania
John Bobbitt
ENERGYLOG UNIT Dakota
CO GEOLOGIST Bill Desormier
CO ENGINEER
CO PUSHER Al Cobb, Garry McCamach
DRILLING CO. Peter Bauden Drilling Co.
RIG 11 PUSHER Blaine Carlson
MUD COMPANY Milchem
MUD ENGINEER Russ Morris
MUD TYPE Gel-Water to 1347'



ENERGYLOG

ENERGY WELL LOGGING SERVICE

LITHOLOGY SYMBOLS

□	□	□	□	□	□	□	□	□	□	□	□	□	□	□	□
▲	▲	▲	▲	▲	▲	▲	▲	▲	▲	▲	▲	▲	▲	▲	▲

META-SEDS

MUD DATA

OTHER DATA

OIL based on live oil in unwashed cuttings, mud, and % staining of washed cuttings.
GAS detector calibration records 100 units with a mixture of 2% by volume methane in air.
DEPTHS derived from drillers log measurements.

DRILLING FLUID PROPERTIES

PHYSICAL CHARACTERISTICS

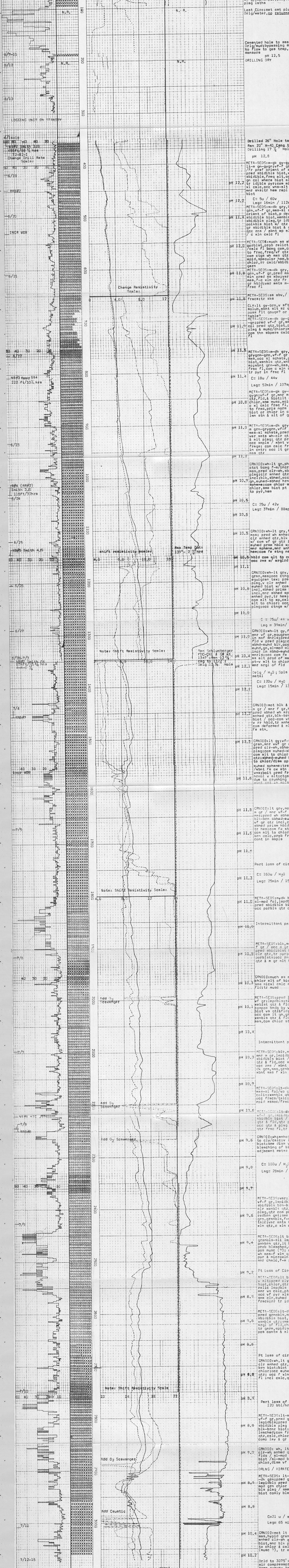
FLUID	MUDFL	AIRID
TEMP OUT	100°	150°
TEMP IN		
TEMP PRESS IN		
TEMP PRESS OUT		

Re (ln) 4.0 4.0 5.0

GAS ANALYSIS

CO, PPM	1000	10000
D	100	1000
H ₂ S, PPM	100	1000
D	100	1000
DITCH GAS	0	1000
D	(units)	1000

PETROGRAPHY AND REMARKS



PHILLIPS PETROLEUM COMPANY Steamboat Springs No. 1; Sec. 5, T17N-R20E, MDB&M; Washoe County, Nevada