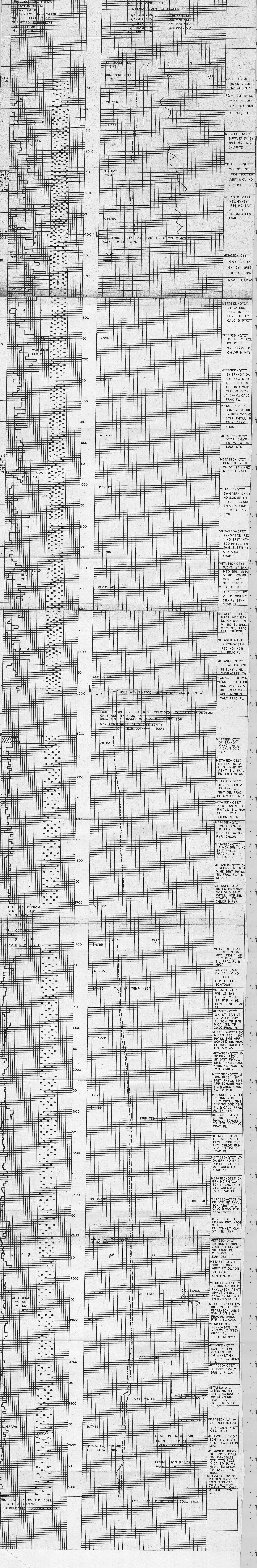


# TOOKE ENGINEERING

P.O. BOX 3300  
CASPER, WYOMING

COMPANY PHILLIPS PETROLEUM  
WELL: STEAMBOAT SPRINGS WELL 23-5  
SEC. 5 T. 17 N. R. 20 E  
COUNTY WASHOE STATE NEVADA  
SUPERVISOR JARAMAN, BAILEY, SPENCER  
UNIT T 108 DATE 7/9/85

WL	LAT—Logged After Trip	SAND	*****	SALT	=====	TEMP IN	-----
WL	CO—Circulated Out	LIME	-----	DOLOMITE	=====	TEMP OUT	-----
WL	NO—No Returns	SHALE	-----	SILISTONE	=====	Rm AT 80°F	-----
FC	DST—Drill Stem Test	MICA	-----	ANHYDRITE	=====	CHROMATOGRAPH	-----
pH	NB—New Bit					MUD GAS ANALYSIS	-----
C						Butanes 10 UNITS / Div. = 0.07%	LITHOLOGICAL
Mud	DRILLING RATE	LITHOLOGY				Propane 10 UNITS / Div. = 0.04%	DESCRIPTION
Data	Min. / Ft.	% In Samples				Ethane 10 UNITS / Div. = 0.03%	and other
Etc.		% Plus				Methane 10 UNITS / Div. = 0.06%	Pertinent Data
		TFG				Helium 0	Total Gas 0.00%



EST TOTAL FLUID LOSS 2000 BBL