

CENTURY GEOPHYSICAL CORPORATION

Tulsa, Oklahoma

BOREHOLE CE-DT-4 DATE 12-11-80

UNIT/OPERATOR 7740/JONES FIELD OFFICE CARSON CITY

EQUIPMENT DATA

PROBE MODEL	910	920	920S	920L
PROBE OPERATOR	117	117	117	117
DETECTOR TYPE	NA	NA	NA	NA
DETECTOR SIZE	85 x 120	120 x 445	85 x 117	5' x 12"
STD. K FACTOR	150 x 10 ⁻¹¹	---	50 x 10 ⁻¹¹	1.02 x 10 ⁻¹¹
STD. GAIN/FEET	1/1000	---	1/1000	1/1000
CALIB. DATE	---	---	6-7	---
K FACTOR x 10 ⁻¹¹	---	---	6.9-8.0	---
SKATING	---	---	5.6	---
TYPE BEARING	---	---	---	---
WATER FACTOR	---	---	---	---
DETECTOR TYPE	---	---	---	---
DETECTOR SIZE	---	---	---	---
SOURCE TYPE	---	---	---	---
SOURCE NO.	---	---	---	---
SOURCE STRENGTH	---	---	---	---
SOURCE SPACING	---	---	---	---
DENSITY	---	---	---	---
DETECTOR TYPE	---	---	---	---
DETECTOR SIZE	---	---	---	---
SOURCE TYPE	---	---	---	---
SOURCE NO.	---	---	---	---
SOURCE STRENGTH	---	---	---	---
SOURCE SPACING	---	---	---	---
WELL PROSPECTION	1470-231	---	1470-231	170-231
RESISTIVITY	---	---	---	---
SELF POTENTIAL	---	---	---	---
TEMPERATURE	---	---	---	---
DEVIATION	---	---	---	---
CAUTION	---	---	---	---

COMPANY: FUGRO NATIONAL

BOREHOLE: CE-DT-4

AREA: COYOTE SPRINGS

COUNTY: CLARK

SECTION: 23ed

TOWNSHIP: 13S

RANGE: 63E

STATE: NEVADA

ELEVATION: _____

HOLES DATA

TOTAL DEPTH - DRILLER: 666'

TOTAL DEPTH - LOGGER: 669'

TOTAL FOOTAGE LOGGED: 669'

LOGGING SPEED: 60/MIN

REFERENCE LEVEL: G.L.

PROBE NO.: 9055A-238

BIT SIZE: 9.9"

CASING - TYPE & SIZE: STEEL/10"ID

CASING DEPTH: 50'

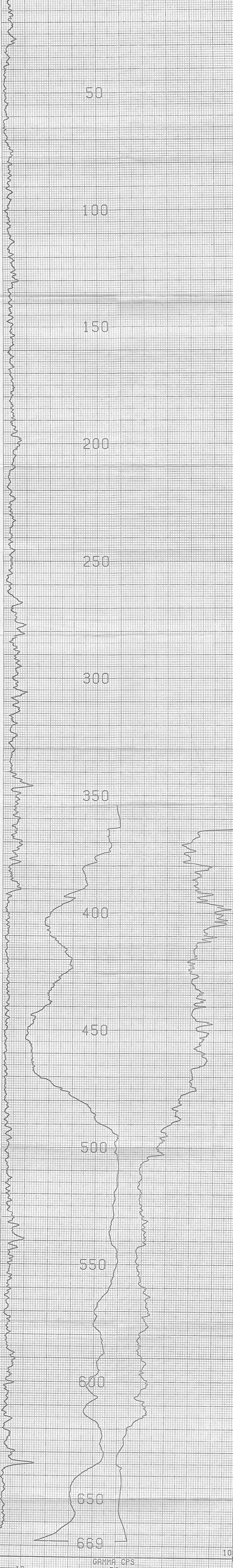
BOREHOLE FLUID: MUD

FLUID RESISTIVITY: NA @ °F

SOFTWARE LEVEL: V31.0

SCALE SELECTION: _____

REMARKS: S.P. AND RESISTANCE CURVES STOP AT APPROXIMATELY 350' BECAUSE FLUID LEVEL IS AT 350'



COMPU-LOG V31.9 PLOT 12-11-80

CE-DT-4

FUGRO NATIONAL

COYOTE SPRINGS

HOLES DIAMETER: 09.9

REAL STD CPS = 6588 CAL RUN CPS = 6210

PROBE # 9055A-238 PROBE CAL BIAS = +00046

TRUCK # 7740 DATA: V31.0

APPL.#3 D

JONES, F.

VERTICAL DEVIATION

COMPULOG V31.1 DEVIATION

MOLE ID: CE-DT-4

SCALE: 2 FT/IN

MAG DECL: 16.0

TRUE DEPTH: 670. FT

AZIMUTH: 163.

DISTANCE: 10.6 FT

TRUE NORTH ↑

△ = 25 FOOT INCR

△ = TOP OF ZONE

◇ = BOTTOM OF ZONE

