

**CENTURY GEOPHYSICAL CORPORATION**  
Tulsa, Oklahoma

**BOREHOLE** CK-VFT-1 **DATE** 01-29-81  
**UNIT OPERATOR** 7667/HORVATH **FIELD OFFICE** CARSON CITY

**COMPANY** FUGRO NATIONAL

**BOREHOLE** CK-VFT-1

**AREA** COYOTE-KANE SPRINGS **ELEVATION** 2460'

**COUNTY** LINCOLN **STATE** NEVADA

**SECTION** NW/4SE/4 29 **TOWNSHIP** 12S **RANGE** 63E

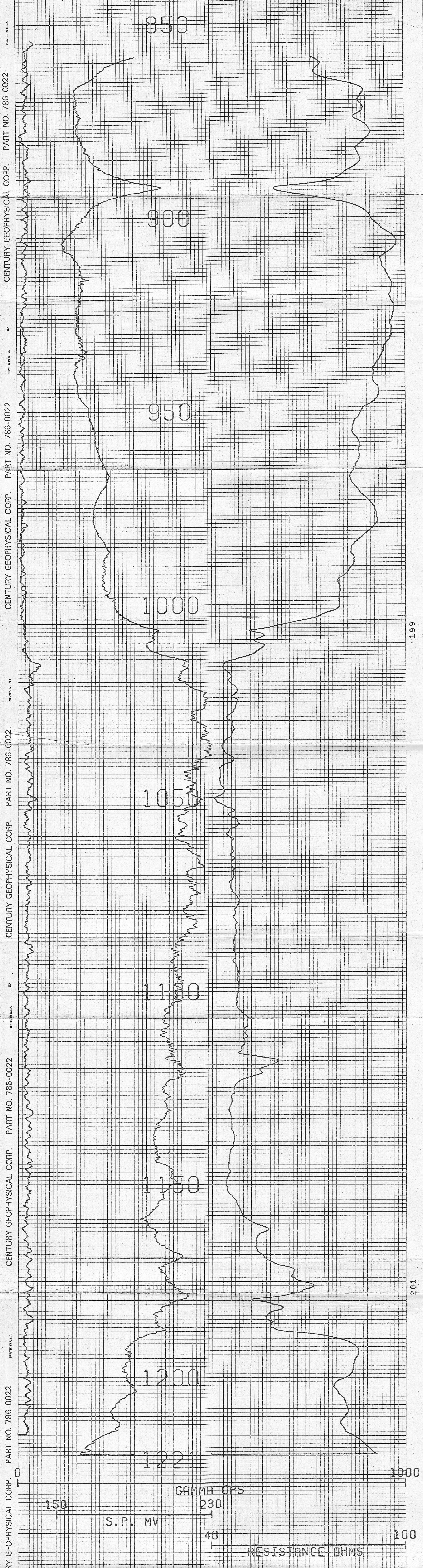
**HOLE DATA**

TOTAL DEPTH - DRILLER : 1221' **BIT SIZE** 9.9"  
TOTAL DEPTH - LOGGER : 1221' **CASING - TYPE & SIZE** 1/4" STEEL  
TOTAL FOOTAGE LOGGED : 371' **CASING DEPTH** 860'  
LOGGING SPEED : 60'/MIN **BOREHOLE FLUID** MUD  
REFERENCE LEVEL : S.L. **FLUID RESISTIVITY** --- @ --- 'F  
PROBE NO. 9055A-238 **SOFTWARE LEVEL** V3L10  
**SCALE SELECTION** --- OPERATOR  
--- CLIENT

**REMARKS:** NG S.P. RES. TEMP. DEV.  
H2O LEVEL @ 82'

**EQUIPMENT DATA**

PROBE MODEL	9010	9020	9050	9060
DETECTOR TYPE	1.8"	2.0"	1.8"	1.4"
DETECTOR SIZE	8.75" x 1.25"	1.25" x 4.5"	8.75" x 4.0"	5" x 3.0"
STYL FACTOR	1.00 x 10 <sup>-4</sup>	---	5.00 x 10 <sup>-4</sup>	1.00 x 10 <sup>-4</sup>
SOIL SHADING	1.00 sec	---	1.00 sec	1.00 sec
SCALE MODEL LOG	---	---	---	---
CALIB DATE	---	---	12/10/80	---
K FACTOR x 10 <sup>-4</sup>	---	---	5.58	---
TEST READING	---	---	1.18	---
WATER FACTOR	---	---	1.27	---
CASING FACTOR	---	---	---	---
DETECTOR TYPE	---	---	1.8"	---
DETECTOR SIZE	---	---	5" x 1.5"	---
SOURCE TYPE	---	---	Ca <sup>2+</sup>	---
SOURCE NO.	---	---	---	---
SOURCE STRENGTH	---	---	---	---
SOURCE SPACING	---	---	---	---
DETECTOR TYPE	---	---	1.8"	---
DETECTOR SIZE	---	---	5" x 1.5"	---
SOURCE TYPE	---	---	Ca <sup>2+</sup>	---
SOURCE NO.	---	---	---	---
SOURCE STRENGTH	---	---	---	---
SOURCE SPACING	---	---	---	---
SINGL. PT. RESISTANCE	1.40 x 2.51	---	1.40 x 2.51	1.10 x 2.51
RESISTIVITY	---	F FOCUSED	---	---
SELF POTENTIAL	YES	---	YES	YES
TEMPERATURE	---	---	YES	---
DERIVATION	---	---	NO (YES)	---
CAUTION	---	YES	---	---



COMPU-LOG V3L9 PLOT 01-29-81

CK-VFT-1  
FUGRO NATIONAL  
COYOTE-KANE SPRINGS  
HOLE DIAMETER : 09.9

CAL STD CPS = 0000 CAL RUN CPS = 0000  
PROBE # 9055A -238 PROBE CAL BIAS = +00000  
TRUCK # 7667 DATA: V3L10  
APPL.#3 E  
JOE HORVATH

