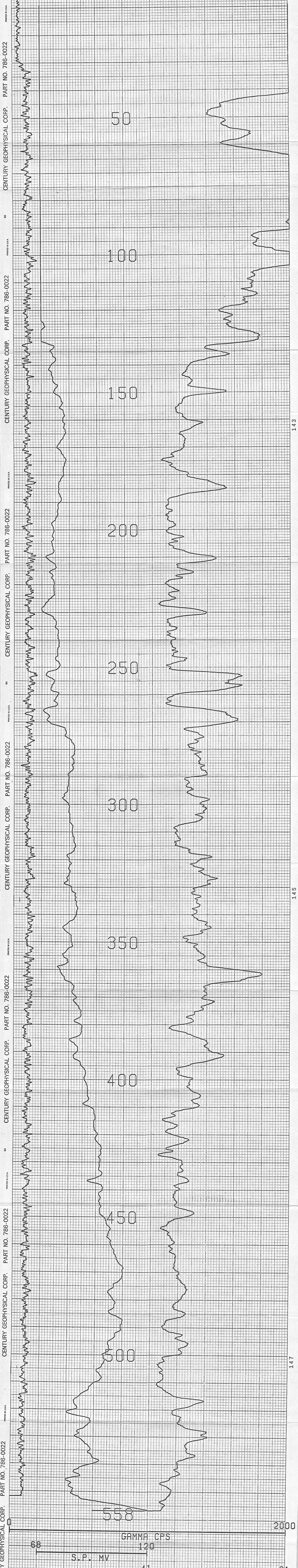


CENTURY GEOPHYSICAL CORPORATION Tulsa, Oklahoma GL04755			OPERATOR F. JONES		DATE 11-15-80	
COMPANY FUGRO NATIONAL			UNIT NO. 7740		FIELD OFFICE CARSON CITY	
BORHOLE CK-S-0-1			EQUIPMENT DATA			
AREA COYOTE-KANE SPRINGS			PROBE MODEL 8010 9000 9005D 9006 PROBE DIAMETER 1 1/2" 2" 1 1/2" 1 1/2"			
COUNTY LINCOLN			DETECTOR TYPE N4 N4 N4 N4			
SECTION 29			DETECTOR SIZE 25" x 25" 25" x 45" 25" x 45" 25" x 45"			
TOWNSHIP 12S			DETECTOR TYPE 1 1/2" 1 1/2" 1 1/2" 1 1/2"			
RANGE 63E			DETECTOR SIZE 1 1/2" x 1 1/2" 1 1/2" x 1 1/2" 1 1/2" x 1 1/2" 1 1/2" x 1 1/2"			
HOLE DATA			DETECTOR TYPE 1 1/2" 1 1/2" 1 1/2" 1 1/2"			
TOTAL DEPTH - DRILLER : 560		BIT SIZE : 12.3		DETECTOR TYPE 1 1/2" 1 1/2" 1 1/2" 1 1/2"		
TOTAL DEPTH - LOGGER : 558		CASING - TYPE & SIZE : NONE		DETECTOR SIZE 1 1/2" x 1 1/2" 1 1/2" x 1 1/2" 1 1/2" x 1 1/2" 1 1/2" x 1 1/2"		
TOTAL FOOTAGE LOGGED : 558		CASING DEPTH : NONE		DETECTOR TYPE 1 1/2" 1 1/2" 1 1/2" 1 1/2"		
LOGGING SPEED : 60/MIN		BORHOLE FLUID : MUD		DETECTOR SIZE 1 1/2" x 1 1/2" 1 1/2" x 1 1/2" 1 1/2" x 1 1/2" 1 1/2" x 1 1/2"		
REFERENCE LEVEL : G.L.		PENND RESISTIVITY : 34.6 @ 73°F		DETECTOR TYPE 1 1/2" 1 1/2" 1 1/2" 1 1/2"		
PROBE NO. : 9055A-238		SOFTWARE LEVEL : V3L10		DETECTOR SIZE 1 1/2" x 1 1/2" 1 1/2" x 1 1/2" 1 1/2" x 1 1/2" 1 1/2" x 1 1/2"		
REMARKS: S.P., RESISTANCE, NATURAL GAMMA, DEVIATION, AND TEMPERATURE LOGGED SCALES CHOSEN BY CLIENT.						



COMPU-LOG V3L9 PLOT 11-15-80

CK-S-T-1
FUGRO NATIONAL
COYOTE-KANE SPRINGS
 HOLE DIAMETER : 12.3

CAL STD CPS = 0000 CAL RUN CPS = 0000
 PROBE # 9055A -238 PROBE CAL BIAS = +00000
 TRUCK # 7740 DATA: V3L10
 APPL. #3 D
 JONES, F.

VERTICAL DEVIATION
 COMPULOG V3L1 DEVIATION
 HOLE ID: CK-S-T-1

SCALE: 1 FT/IN +/- = 25 FOOT INCR
 MAG DECL: 16.0 Δ = TOP OF ZONE
 TRUE DEPTH: 558. FT ◇ = BOTTOM OF ZONE
 AZIMUTH: 324.
 DISTANCE: 1.7 FT TRUE NORTH ↑