

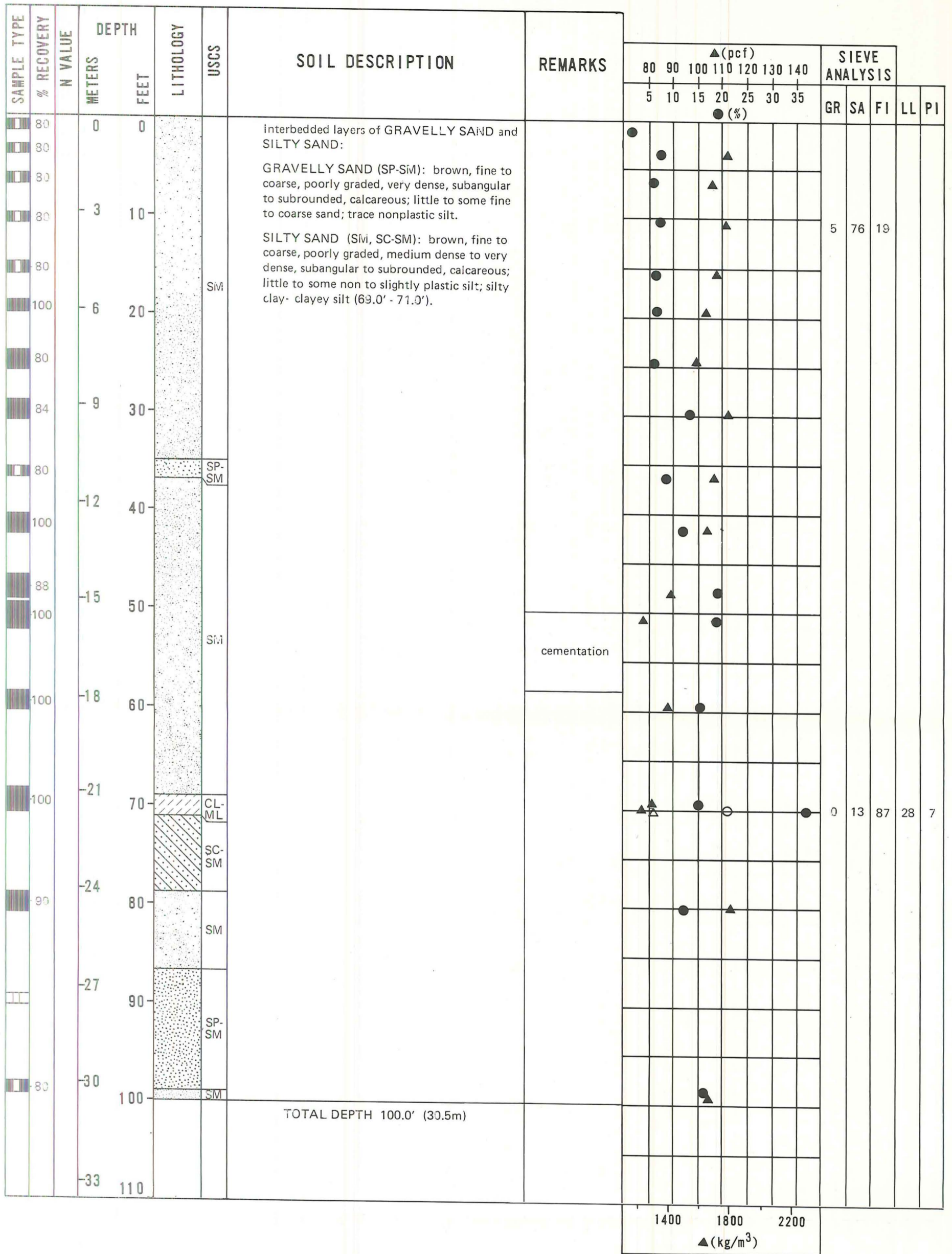
EXPLANATION

- █ FUGRO DRIVE SAMPLE
- ▤ BULK SAMPLE
- █ PITCHER TUBE SAMPLE
- ▤ STANDARD PENETRATION TEST SAMPLE
- ▨ CORE SAMPLE
- N - STANDARD PENETRATION RESISTANCE
- ▲ - DRY UNIT WEIGHT (ASTM: D-2937-71)

BORING DETAILS

- ELEVATION : 2580' (786m)
- SURFICIAL GEOLOGIC UNIT : A50
- DATE DRILLED : 27 October 1980
- DRILLING METHOD : Rotary Wash
- HOLE DIAMETER : 4 7/8" (124mm)
- WATER LEVEL : Not Encountered

FUGRO NATION
 DEPARTMENT OF THE AIR FORCE - BR
 MX SITING INVESTIGATION
 COYOTE SPRING VALLEY,
 LOG OF BORING CE-
 OPERATIONAL BASE



EXPLANATION

- [Symbol] FUGRO DRIVE SAMPLE
- [Symbol] BULK SAMPLE
- [Symbol] PITCHER TUBE SAMPLE
- [Symbol] STANDARD PENETRATION TEST SAMPLE
- [Symbol] CORE SAMPLE
- N - STANDARD PENETRATION RESISTANCE
- ▲ - DRY UNIT WEIGHT (ASTM: D-2937-71)

BORING DETAILS

ELEVATION : 2580' (786m)
 SURFICIAL GEOLOGIC UNIT : A50
 DATE DRILLED : 27 October 1980
 DRILLING METHOD : Rotary Wash
 HOLE DIAMETER : 4 7/8" (124mm)
 WATER LEVEL : Not Encountered

FUGRO NATIONAL

LOG OF BORING CE-B-
 OPERATIONAL BASE SI
 COYOTE SPRING VALLEY, N

MAX SITING INVESTIGATION
 DEPARTMENT OF THE AIR FORCE - BMC