

| SAMPLE TYPE | % RECOVERY | N VALUE | DEPTH  |      | LITHOLOGY | USCS  | SOIL DESCRIPTION  | REMARKS | ▲(pcf) |    |     |     |     |     | SIEVE ANALYSIS |   |    |    |    |    |    |    |    |
|-------------|------------|---------|--------|------|-----------|-------|---|---------|--------|----|-----|-----|-----|-----|----------------|---|----|----|----|----|----|----|----|
|             |            |         | METERS | FEET |           |       |   |         | 80     | 90 | 100 | 110 | 120 | 130 | 140            | 5 | 10 | 15 | 20 | 30 | 35 | GR | SA |
|             | 80         |         | 0      | 0    |           | SM    | SILTY SAND, light brown, fine to coarse, poorly graded, loose, subangular to subrounded calcareous; some fine to coarse gravel; little nonplastic silt.   |         |        |    |     |     |     |     |                |   |    | 40 | 47 | 13 |    |    |    |
|             | 80         |         |        |      |           | GP-GM |   |         |        |    |     |     |     |     |                |   |    |    |    |    |    |    |    |
|             | 100        |         | 3      | 10   |           | SW-SM | Interbedded layers of SANDY GRAVEL and GRAVELLY SAND:   |         |        |    |     |     |     |     |                |   |    | 10 | 81 | 9  |    |    |    |
|             | 80         |         |        |      |           |       | SANDY GRAVEL (GP-GM): brown, fine to coarse, poorly graded, loose to very dense, subangular to subrounded, calcareous; some fine to coarse sand; trace nonplastic silt.   |         |        |    |     |     |     |     |                |   |    |    |    |    |    |    |    |
|             | 100        |         | 6      | 20   |           | GP-GM | GRAVELLY SAND (SW-SM, SP-SM): dark brown, fine to coarse, well to poorly graded, dense to very dense, subangular to subrounded, calcareous; trace to some fine to coarse gravel; trace nonplastic silt; silty sand (51.0' - 52.0'). |         |        |    |     |     |     |     |                |   |    |    |    |    |    |    |    |
|             | 100        |         | 9      | 30   |           |       |   |         |        |    |     |     |     |     |                |   |    | 15 | 75 | 10 |    |    |    |
|             |            |         |        |      |           |       |   | boulder |        |    |     |     |     |     |                |   |    |    |    |    |    |    |    |
|             | 100        |         | 15     | 50   |           | SM    |   |         |        |    |     |     |     |     |                |   |    |    |    |    |    |    |    |
|             |            |         |        |      |           |       | TOTAL DEPTH 52.0' (15.8m)   |         |        |    |     |     |     |     |                |   |    |    |    |    |    |    |    |
|             |            |         | 18     | 60   |           |       |   |         |        |    |     |     |     |     |                |   |    |    |    |    |    |    |    |
|             |            |         | 21     | 70   |           |       |   |         |        |    |     |     |     |     |                |   |    |    |    |    |    |    |    |
|             |            |         | 24     | 80   |           |       |   |         |        |    |     |     |     |     |                |   |    |    |    |    |    |    |    |
|             |            |         | 27     | 90   |           |       |   |         |        |    |     |     |     |     |                |   |    |    |    |    |    |    |    |
|             |            |         | 30     | 100  |           |       |   |         |        |    |     |     |     |     |                |   |    |    |    |    |    |    |    |
|             |            |         | 33     | 110  |           |       |   |         |        |    |     |     |     |     |                |   |    |    |    |    |    |    |    |

**EXPLANATION**

- FUGRO DRIVE SAMPLE
- BULK SAMPLE
- PITCHER TUBE SAMPLE
- STANDARD PENETRATION TEST SAMPLE
- ▨ CORE SAMPLE

- N - STANDARD PENETRATION RESISTANCE
- ▲ - DRY UNIT WEIGHT (ASTM: D-2937-71)
- - MOISTURE CONTENT (ASTM: D-2216-71)

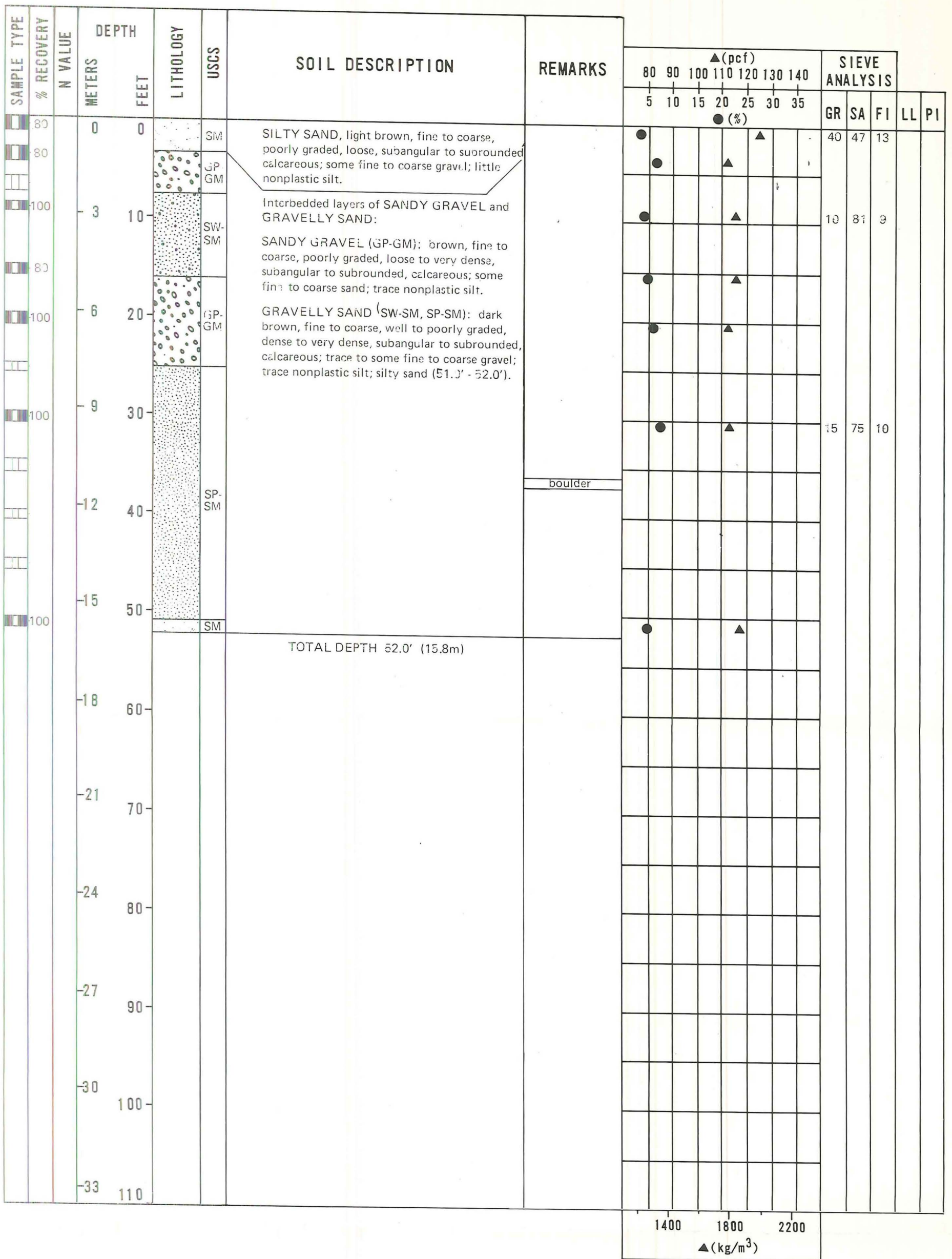
**BORING DETAILS**

ELEVATION : 2870' (875m)  
 SURFICIAL GEOLOGIC UNIT : A50  
 DATE DRILLED : 29 October 1980  
 DRILLING METHOD : Rotary Wash  
 HOLE DIAMETER : 4 7/8" (124mm)  
 WATER LEVEL : Not Encountered


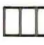



**FUGRO NATIONAL**  
 MX SITING INVESTIGATION  
 DEPARTMENT OF THE AIR FORCE - BMO  
 LOG OF BORING CE-B-16  
 OPERATIONAL BASE SITE  
 COYOTE SPRING VALLEY, NEVADA

1400 1800 2200  
 ▲(kg/m<sup>3</sup>)





**EXPLANATION**

-  FUGRO DRIVE SAMPLE
-  BULK SAMPLE
-  PITCHER TUBE SAMPLE
-  STANDARD PENETRATION TEST SAMPLE
-  CORE SAMPLE

- N - STANDARD PENETRATION RESISTANCE
- ▲ - DRY UNIT WEIGHT (ASTM: D-2937-71)
- - MOISTURE CONTENT (ASTM: D-2216-71)

**BORING DETAILS**

ELEVATION : 2870' (875m)  
 SURFICIAL GEOLOGIC UNIT : A50  
 DATE DRILLED : 29 October 1980  
 DRILLING METHOD : Rotary Wash  
 HOLE DIAMETER : 4 7/8" (124mm)  
 WATER LEVEL : Not Encountered

**FUGRO NATIONAL**  
 DEPARTMENT OF THE AIR FORCE - BMO  
 MX SITING INVESTIGATION  
 LOG OF BORING CE-B-11  
 OPERATIONAL BASE SIT  
 COYOTE SPRING VALLEY, NE