

**CENTURY GEOPHYSICAL CORPORATION**  
Tulsa, Oklahoma

COMPANY: **FUGRO NATIONAL**  
BOREHOLE: **DU-S-T-1**  
AREA: **DUGWAY VALLEY**  
COUNTY: **31** STATE: **UTAH**  
TOWNSHIP: **12S** RANGE: **10W**

**HOLE DATA**

TOTAL DEPTH - DRILLER	: 400	BIT SIZE	: 9.9"
TOTAL DEPTH - LOGGER	: 402	CASING - TYPE & SIZE	: NONE
TOTAL FOOTAGE LOGGED	: 402	CASING DEPTH	: NONE
LOGGING SPEED	: 60/MIN	BOREHOLE FLUID	: MUD
REFERENCE LEVEL	: 61	FLUID RESISTIVITY	: 5.1 @ 91"
PROBE NO.	: 9055A-238	SOFTWARE LEVEL	: V3L10

REMARKS:

OPERATOR: **F. JONES** DATE: **07-29-80**  
UNIT NO.: **7740** FIELD OFFICE: **CARSON CITY**

**EQUIPMENT DATA**

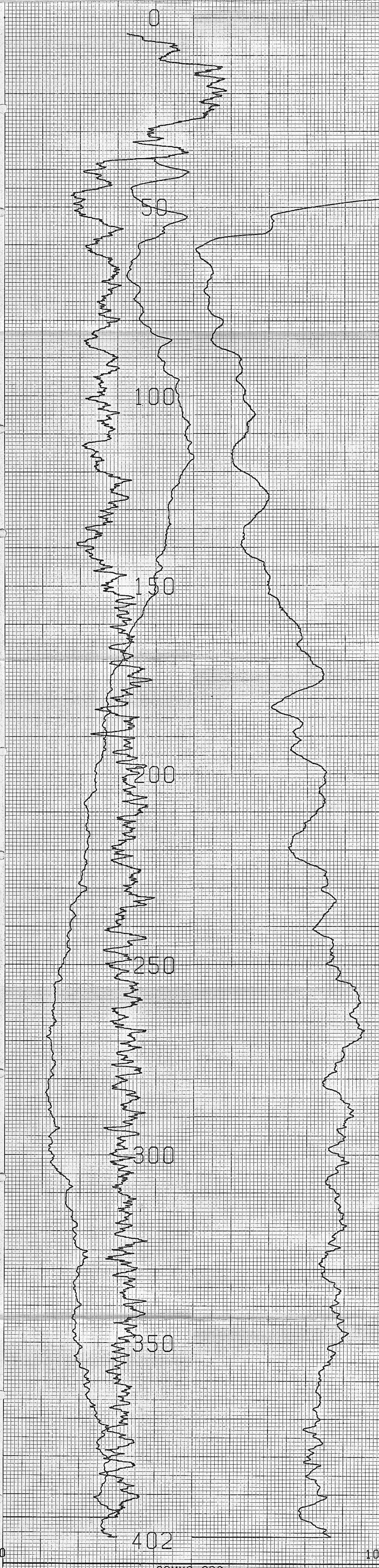
PROBE MODEL	810	900	900/8	900
PROBE DIAMETER	1.87"	2.0"	1.87"	1.4"
DETECTOR TYPE	NM	NM	NM	NM
DETECTOR SIZE	3.75 x 1.25"	1.25 x 4.5"	3.75 x 1.25"	5" x 3.125"
SOURCE FACTOR	1.28 x 10 <sup>-11</sup>	—	3.25 x 10 <sup>-11</sup>	1.82 x 10 <sup>-11</sup>
SOURCE GEOMETRY	1.25"	—	1.25"	1.25"
CALIB. NUMBER	—	—	—	—
FLUID DATE	—	—	6-9-80	—
FACTORY	—	—	5.6 x 10 <sup>-6</sup>	—
GEOMETRY	—	—	1.1 x 10 <sup>-6</sup>	—
TEST READING	—	—	—	—
WATER FACTOR	—	—	—	—
CASING FACTOR	—	—	—	—
DETECTOR TYPE	—	NM	—	NM
DETECTOR SIZE	—	5" x 15"	—	5" x 31"
SOURCE TYPE	—	CM	—	CM
SOURCE NO.	—	—	—	—
SOURCE STRENGTH	—	—	—	—
SOURCE SPACING	—	—	—	—

**DENSITY**

DETECTOR TYPE	—	—	16"
DETECTOR SIZE	—	—	15" x 8"
SOURCE TYPE	—	—	AmB
SOURCE NO.	—	—	71-1-439
SOURCE STRENGTH	—	—	1.0
SOURCE SPACING	—	—	14"

**NEUTRON**

SNAIL PT RESISTANCE	14" x 25L	—	14" x 25L	17" x 25L
RESISTIVITY	—	P FOCUSED	—	—
SELF POTENTIAL	YES	—	YES	YES
TEMPERATURE	—	—	YES	—
ORIENTATION	—	—	40	YES
CALIBR	—	YES	—	—



COMPU-LOG V3L9 PLOT 07-29-80

DU-S-T-1  
FUGRO NATIONAL  
DUGWAY VALLEY  
HOLE DIAMETER: 09.9

CAL STD CPS = 0000	CAL RUN CPS = 0000
PROBE # 9055A-238	PROBE CAL BIAS = +00000
TRUCK # 7740	DATA: V3L10
APPL. #3 D	
JONES, F.	

CENTURY GEOPHYSICAL CORP. PART NO. 786-0022

065  
066  
067