



CENTURY GEOPHYSICAL CORPORATION  
Tulsa, Oklahoma

OPERATOR: F. JONES  
DATE: 08-29-80  
UNIT NO: 7740  
FIELD OFFICE: CARSON CITY

COMPANY: FUGRO NATIONAL  
BOREHOLE: HC-S-T-1  
AREA: HOT CREEK VALLEY  
COUNTY: NYE  
SECTION: 10aa  
TOWNSHIP: 7N  
ELEVATION: 5600  
STATE: NEVADA  
RANGE: 50E 51E

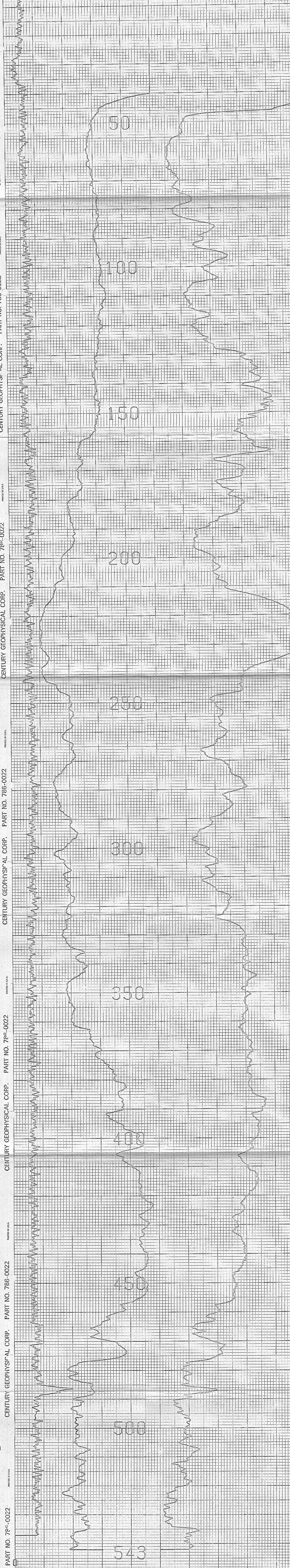
EQUIPMENT DATA			
PROF MODEL	810	080	0670
PROF DIAMETER	1.87	2.0	1.87
DETECTOR TYPE	120	120	120
DETECTOR SIZE	120 x 120	120 x 120	120 x 120
STO. FACTOR	1.0	1.0	1.0
STO. SPACING	1.0	1.0	1.0
CAN. MODEL	---	---	---
TRACER	---	---	---
TRACER FACTOR	---	---	---
TRACER SPACING	---	---	---
DETECTOR TYPE	---	---	---
DETECTOR SIZE	---	---	---
STO. FACTOR	---	---	---
STO. SPACING	---	---	---
SOIL RESISTANCE	145 x 181	145 x 181	145 x 181
RESISTANCE	---	---	---
TEMPERATURE	---	---	---
TEMPERATURE	---	---	---
TEMPERATURE	---	---	---
TEMPERATURE	---	---	---

**HOLE DATA**

TOTAL DEPTH - DRILLER: 540'  
 TOTAL DEPTH - LOGGER: 543'  
 TOTAL FOOTAGE LOGGED: 543'  
 LOGGING SPEED: 60/MIN  
 REFERENCE LEVEL: G.L.  
 PROBE NO.: 9055A-238

BIT SIZE: 9.9"  
 CASING - TYPE & SIZE: STEEL/2 1/2"  
 CASING DEPTH: 40'  
 BOREHOLE FLUID: MUD  
 FLUID RESISTIVITY: 3.7 @ 70"  
 SOFTWARE LEVEL: V3L10

REMARKS:



25 60  
 S.P. MV 19  
 GAMMA CPS  
 RESISTANCE OHMS

COMPULOG V3L9 PLMT 08-29-80  
 HC-S-T-1  
 FUGRO NATIONAL  
 HOT CREEK VALLEY  
 HOLE DIAMETER: 09.9

CAL STD CPS = 0000  
 CAL RUN CPS = 0000  
 PROBE # 9055A-238  
 PROBE CAL BIAS = +00000  
 TRUCK # 7740  
 DATA: V3L10  
 APPL. #3 D  
 JONES, F.

**VERTICAL DEVIATION**  
 COMPULOG V3L1 DEVIATION  
 HOLE ID: HC-S-T-1

SCALE: 1 FT/IN  
 MAG DECL: 18.0  
 TRUE DEPTH: 543. FT  
 AZIMUTH: 216.  
 DISTANCE: 51.6 FT

1" = 60 FOOT INCR  
 Δ = TOP OF ZONE  
 ○ = BOTTOM OF ZONE  
 TRUE NORTH ↑

