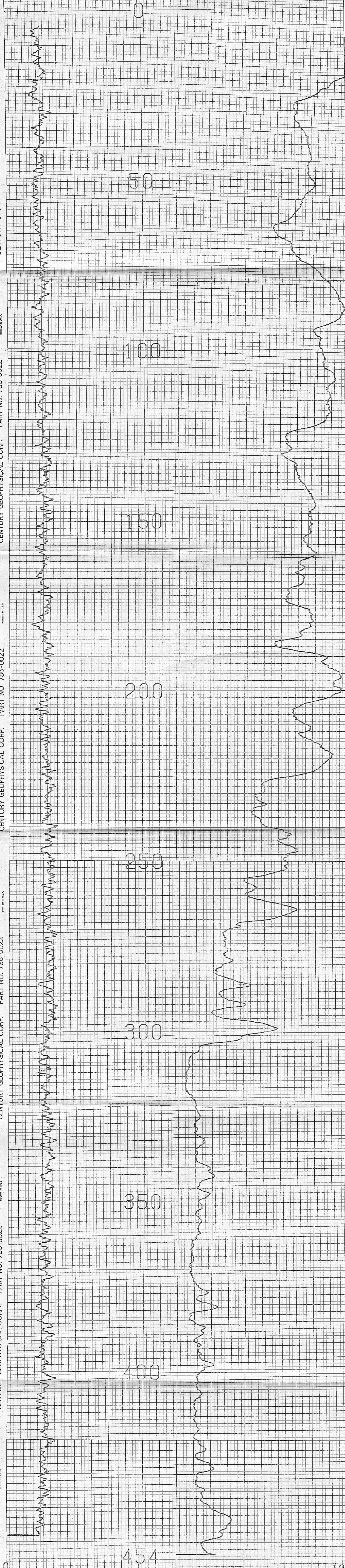
 CENTURY GEOPHYSICAL CORPORATION Tulsa, Oklahoma		OPERATOR F. JONES DATE 09-07-80 UNIT NO. 7740 FIELD OFFICE CARSON CITY																																																												
COMPANY FUGRO NATIONAL		EQUIPMENT DATA																																																												
BOREHOLE HC-S-0-2	ELEVATION	<table border="1"> <tr><td>PROBE MODEL</td><td>800</td><td>900</td><td>9500</td><td>990</td></tr> <tr><td>DETECTOR TYPE</td><td>1.8"</td><td>2.2"</td><td>1.8"</td><td>1.4"</td></tr> <tr><td>DETECTOR SIZE</td><td>28" x 12"</td><td>12" x 12"</td><td>20" x 10"</td><td>8" x 8"</td></tr> <tr><td>GRID FACTOR</td><td>1.8 x 10⁻³</td><td>—</td><td>2.0 x 10⁻³</td><td>1.2 x 10⁻³</td></tr> <tr><td>GRID SCALING</td><td>1.0000</td><td>—</td><td>1.0000</td><td>1.0000</td></tr> <tr><td>CALIBRATION LOC.</td><td>—</td><td>—</td><td>6-J</td><td>—</td></tr> <tr><td>CALIB DATE</td><td>—</td><td>—</td><td>6-9-80</td><td>—</td></tr> <tr><td>W FACTOR</td><td>—</td><td>—</td><td>5.6 x 10⁻⁶</td><td>—</td></tr> <tr><td>TEARABLE</td><td>—</td><td>—</td><td>1.1 x 10⁻⁶</td><td>—</td></tr> <tr><td>WELL READING</td><td>—</td><td>—</td><td>—</td><td>—</td></tr> <tr><td>WATER FACTOR</td><td>—</td><td>—</td><td>—</td><td>—</td></tr> <tr><td>LOGGING FACTOR</td><td>—</td><td>—</td><td>—</td><td>—</td></tr> </table>	PROBE MODEL	800	900	9500	990	DETECTOR TYPE	1.8"	2.2"	1.8"	1.4"	DETECTOR SIZE	28" x 12"	12" x 12"	20" x 10"	8" x 8"	GRID FACTOR	1.8 x 10 ⁻³	—	2.0 x 10 ⁻³	1.2 x 10 ⁻³	GRID SCALING	1.0000	—	1.0000	1.0000	CALIBRATION LOC.	—	—	6-J	—	CALIB DATE	—	—	6-9-80	—	W FACTOR	—	—	5.6 x 10 ⁻⁶	—	TEARABLE	—	—	1.1 x 10 ⁻⁶	—	WELL READING	—	—	—	—	WATER FACTOR	—	—	—	—	LOGGING FACTOR	—	—	—	—
PROBE MODEL	800	900	9500	990																																																										
DETECTOR TYPE	1.8"	2.2"	1.8"	1.4"																																																										
DETECTOR SIZE	28" x 12"	12" x 12"	20" x 10"	8" x 8"																																																										
GRID FACTOR	1.8 x 10 ⁻³	—	2.0 x 10 ⁻³	1.2 x 10 ⁻³																																																										
GRID SCALING	1.0000	—	1.0000	1.0000																																																										
CALIBRATION LOC.	—	—	6-J	—																																																										
CALIB DATE	—	—	6-9-80	—																																																										
W FACTOR	—	—	5.6 x 10 ⁻⁶	—																																																										
TEARABLE	—	—	1.1 x 10 ⁻⁶	—																																																										
WELL READING	—	—	—	—																																																										
WATER FACTOR	—	—	—	—																																																										
LOGGING FACTOR	—	—	—	—																																																										
AREA HOT CREEK VALLEY	STATE NEVADA	<table border="1"> <tr><td>DETECTOR TYPE</td><td>—</td><td>—</td><td>—</td><td>—</td></tr> <tr><td>DETECTOR SIZE</td><td>—</td><td>—</td><td>12" x 12"</td><td>—</td></tr> <tr><td>GRID TYPE</td><td>—</td><td>—</td><td>—</td><td>—</td></tr> <tr><td>SOURCE NO.</td><td>—</td><td>—</td><td>—</td><td>—</td></tr> <tr><td>SOURCE TYPE</td><td>—</td><td>—</td><td>—</td><td>—</td></tr> <tr><td>SOURCE SIZE</td><td>—</td><td>—</td><td>—</td><td>—</td></tr> <tr><td>SOURCE LENGTH</td><td>—</td><td>—</td><td>—</td><td>—</td></tr> <tr><td>SOURCE SPACING</td><td>—</td><td>—</td><td>—</td><td>—</td></tr> </table>	DETECTOR TYPE	—	—	—	—	DETECTOR SIZE	—	—	12" x 12"	—	GRID TYPE	—	—	—	—	SOURCE NO.	—	—	—	—	SOURCE TYPE	—	—	—	—	SOURCE SIZE	—	—	—	—	SOURCE LENGTH	—	—	—	—	SOURCE SPACING	—	—	—	—																				
DETECTOR TYPE	—	—	—	—																																																										
DETECTOR SIZE	—	—	12" x 12"	—																																																										
GRID TYPE	—	—	—	—																																																										
SOURCE NO.	—	—	—	—																																																										
SOURCE TYPE	—	—	—	—																																																										
SOURCE SIZE	—	—	—	—																																																										
SOURCE LENGTH	—	—	—	—																																																										
SOURCE SPACING	—	—	—	—																																																										
COUNTY NYE	TOWNSHIP 6N	RANGE 50E																																																												
HOLE DATA																																																														
TOTAL DEPTH - DRILLER : 450	BIT SIZE : 9.9"																																																													
TOTAL DEPTH - LOGGER : 455	CASING - TYPE & SIZE : NONE																																																													
TOTAL FOOTAGE LOGGED : 455	CASING DEPTH : NONE																																																													
LOGGING SPEED : 60/MIN	BOREHOLE FLUID : MUD																																																													
REFERENCE LEVEL : G.L.	FLUID RESISTIVITY : 5.7 @ 50°F																																																													
PROBE NO. : 9055A-238	SOFTWARE LEVEL : V3L10																																																													
REMARKS: THE S.P. CURVE IS NOT SHOWN DUE TO AN EQUIPMENT MALFUNCTION. THE CLIENT FELT IT WAS NOT COST EFFECTIVE TO SPEND A LARGE AMOUNT OF TIME TRYING TO SOLVE THE PROBLEM SINCE THIS WAS THE OBSERVATION WELL.																																																														



COMPU-LOG V3L9 PLOT 09-07-80

HC-S-0-2
 FUGRO NATIONAL
 HOT CREEK VALLEY
 HOLE DIAMETER : 09.9

CAL STD CPS = 0000 CAL RUN CPS = 0000
 PROBE # 9055A-238 PROBE CAL BIAS = +00000
 TRUCK # 7740 DATA: V3L10
 APPL #3 D
 JONES, F.

VERTICAL DEVIATION
 COMPULOG V3L1 DEVIATION
 HOLE ID: HC-S-0-2

SCALE: 1 FT/IN
 MAG DECL: 16.0
 TRUE DEPTH: 455. FT
 AZIMUTH: 245.
 DISTANCE: 1.0 FT

= 25 FOOT INCR
 Δ = TOP OF ZONE
 ◊ = BOTTOM OF ZONE
 TRUE NORTH ↑

