



CENTURY GEOPHYSICAL CORPORATION

Tulsa, Oklahoma

OPERATOR: **F. JONES** DATE: **08-15-80**

UNIT NO.: **7740** FIELD OFFICE: **CARSON CITY**

COMPANY: **FUGRO NATIONAL**
 BOREHOLE: **RR-S-0-1**
 AREA: **RAILROAD VALLEY**
 COUNTY: **NYE** STATE: **NEVADA**
 SECTION: **2E 1/2 SE 4** TOWNSHIP: **3N** RANGE: **52E**

EQUIPMENT DATA

PROBE MODEL	SDS	SDS	SDS20	SDS
PROBE CONSTANT	1.87	2.0	1.87	1.87
DETECTOR TYPE	Nu	Nu	Nu	Nu
DETECTOR SIZE	3" x 12"	12" x 4"	3" x 4"	3" x 3"
STD. K FACTOR	1.50 x 10 ⁻¹	—	5.50 x 10 ⁻¹	1.50 x 10 ⁻¹
STD. GEACTIME	1.00us	—	1.00us	1.00us
CALIB. MODEL LOC.	—	—	G-T	—
CALIB. DATE	—	—	6-9-80	—
K FACTOR	—	—	5.6 x 10⁻⁶	—
TEST HEADS	—	—	1.1 x 10⁻⁶	—
WATER FACTOR	—	—	—	—
CASING FACTOR	—	—	—	—
DETECTOR TYPE	—	Nu	—	Nu
DETECTOR SIZE	—	3" x 12"	—	3" x 3"
SOURCE TYPE	—	Ca	—	Ca
SOURCE NO.	—	—	—	—
SOURCE STRENGTH	—	—	—	—
SOURCE SPACING	—	—	—	—

HOLES DATA

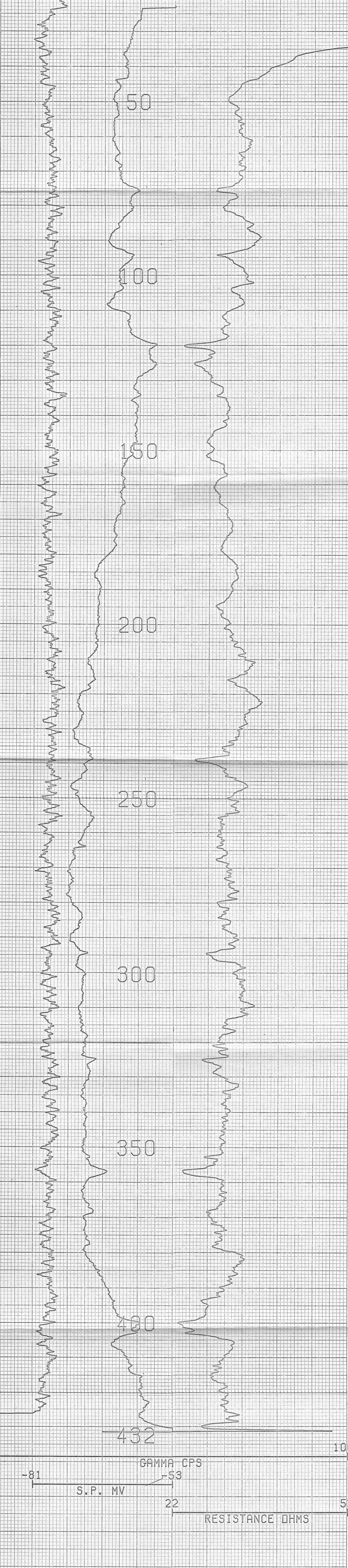
TOTAL DEPTH - DRILLER: **470** BIT SIZE: **9.9"**
 TOTAL DEPTH - LOGGER: **432** CASING TYPE & SIZE: **NONE**
 TOTAL FOOTAGE LOGGED: **432** BOREHOLE DEPTH: **NONE**
 LOGGING SPEED: **60/MIN** BOREHOLE FLUID: **MUD**
 REFERENCE LEVEL: **G.L.** FLUID RESISTIVITY: **13.4 @ 77°**
 PROBE NO.: **9055A-238** SOFTWARE LEVEL: **V31.10**

REMARKS:

DENSITY	DETECTOR TYPE	DETECTOR SIZE	SOURCE TYPE	SOURCE NO.	SOURCE STRENGTH	SOURCE SPACING
—	—	—	—	—	—	—
—	—	—	—	—	—	—
—	—	—	—	—	—	—
—	—	—	—	—	—	—

NEUTRON	DETECTOR TYPE	DETECTOR SIZE	SOURCE TYPE	SOURCE NO.	SOURCE STRENGTH	SOURCE SPACING
—	—	—	—	—	—	—
—	—	—	—	—	—	—
—	—	—	—	—	—	—
—	—	—	—	—	—	—

SNGL. PT. RESISTANCE	14" x 2 1/2"	8" FOCUSED	14" x 2 1/2"	17" x 2 1/2"
RESISTIVITY	—	—	—	—
SELF POTENTIAL	YES	YES	YES	YES
TEMPERATURE	—	—	—	—
DEVIATION	—	—	NO/YES	—
CALIBR	—	YES	—	—



COMPU-LOG V3L9 PLOT 08-15-80

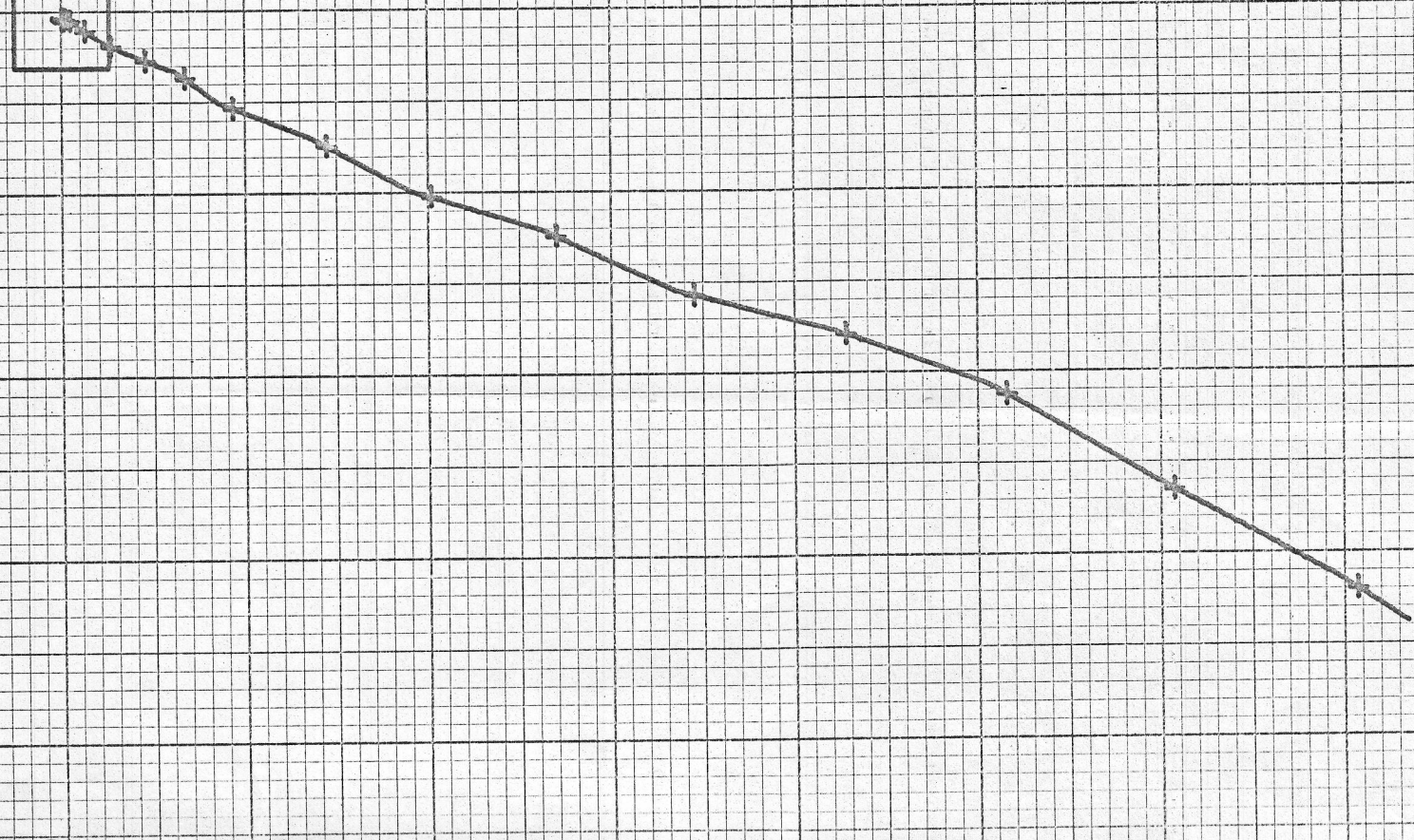
RR-S-0-1
 FUGRO NATIONAL
 RAILROAD VALLEY
 HOLE DIAMETER: 09.9

CAL STD CPS = 0000 CAL RUN CPS = 0000
 PROBE # 9055A-238 PROBE CAL BIAS = +00000
 TRUCK # 7740 DATA: V3L10
 APPL. #3 D
 JONES, F.

VERTICAL DEVIATION

COMPULOG V3L1 DEVIATION
HOLE ID: RR-S-0-1

SCALE: 5 FT/IN Δ = 25 FOOT INCR
 MAG DECL: 18.0 Δ = TOP OF ZONE
 TRUE DEPTH: 429. FT ◊ = BOTTOM OF ZONE
 AZIMUTH: 114. TRUE NORTH ↑
 DISTANCE: 40.2 FT



PRINTED IN U.S.A. CENTURY GEOPHYSICAL CORP. PART NO. 786 7022

109
110
111
112