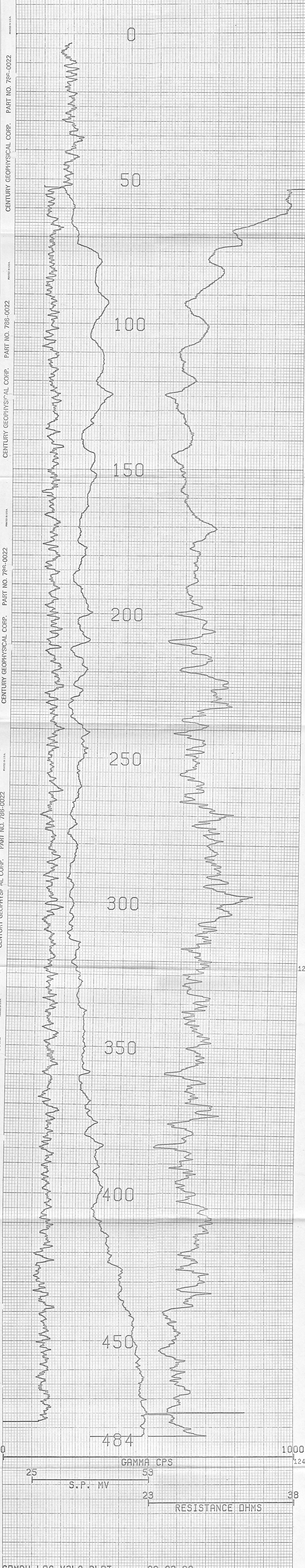
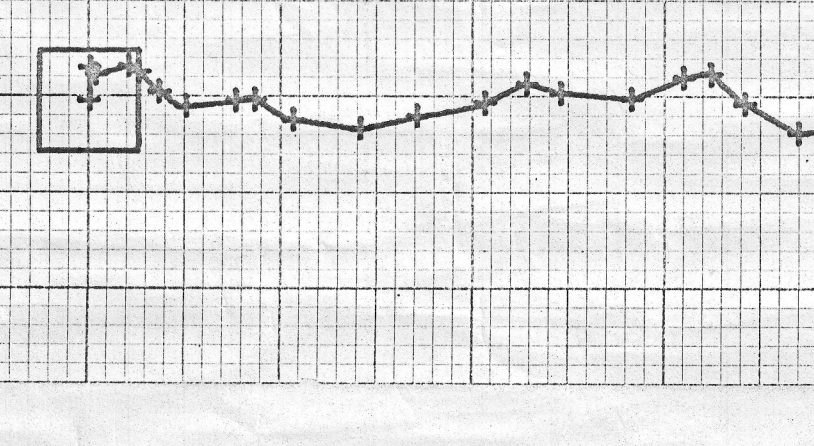
 <b>CENTURY GEOPHYSICAL CORPORATION</b> Tulsa, Oklahoma		OPERATOR <b>F. JONES</b>	DATE <b>08-03-80</b>
COMPANY <b>FUGRO NATIONAL</b>		UNIT NO. <b>7740</b>	FIELD OFFICE <b>CARSON CITY</b>
BOREHOLE <b>RR-S-T-1</b>		EQUIPMENT DATA	
AREA <b>RAILROAD VALLEY</b>		PROBE MODEL 9010    9020    9050S    9060	PROBE DIAMETER 1.87"    2.25"    1.87"    1.87"
COUNTY <b>NYE</b>		ELEVATION <b>5007</b>	DETECTOR TYPE 80" x 120"    120" x 140"    80" x 140"    8" x 10"
STATE <b>NEVADA</b>		RANGE <b>52E</b>	DETECTOR SIZE 1.00 x 10 <sup>-11</sup> —    1.00 x 10 <sup>-11</sup> 1.62 x 10 <sup>-11</sup>
SECTION <b>2E 1/2 SE 1/4</b>		TOWNSHIP <b>3N</b>	STD. DEADTIME 1/2 SEC    —    1/2 SEC    1/2 SEC
RANGE <b>52E</b>		CALIB. MOOD LOC. <b>G.J.</b>	CALIB. DATE <b>6-9-80</b>
<b>HOLE DATA</b>		K FACTOR <b>5.6 x 10<sup>-6</sup></b>	TEST READING <b>1.1 x 10<sup>-6</sup></b>
TOTAL DEPTH - DRILLER : <b>492</b>	BIT SIZE : <b>9.9"</b>	DETECTOR TYPE —    —    —    —	DETECTOR TYPE —    —    —    —
TOTAL DEPTH - LOGGER : <b>484</b>	CASING - TYPE & SIZE : <b>NONE</b>	DETECTOR SIZE —    —    —    —	DETECTOR SIZE —    —    —    —
TOTAL FOOTAGE LOGGED : <b>484</b>	CASING DEPTH : <b>NONE</b>	SOURCE TYPE —    —    —    —	SOURCE TYPE —    —    —    —
LOGGING SPEED : <b>60/MIN</b>	BOREHOLE FLUID : <b>MUD</b>	SOURCE NO. —    —    —    —	SOURCE NO. —    —    —    —
REFERENCE LEVEL : <b>G.I.</b>	FLUID RESISTIVITY : <b>42 @ 9C</b>	SOURCE STRENGTH —    —    —    —	SOURCE STRENGTH —    —    —    —
PROBE NO. : <b>9055A-238</b>	SOFTWARE LEVEL : <b>V3L10</b>	SOURCE SPACING —    —    —    —	SOURCE SPACING —    —    —    —
REMARKS:		SINGL. PT RESISTANCE 1"x3" x 2.5'    —    1"x3" x 2.5'    1"x3" x 2.5'	SINGL. PT RESISTANCE —    —    —    —
		SELF POTENTIAL YES    —    YES    YES	SELF POTENTIAL —    —    —    —
		TEMPERATURE —    —    —    —	TEMPERATURE —    —    —    —
		DEVIATION —    —    —    —	DEVIATION —    —    —    —
		CALPER —    YES    —    —	CALPER —    —    —    —

PRIMARY



COMPU-LOG V3L9 PLOT    08-03-80  
**RR-S-T-1**  
**FUGRO NATIONAL**  
**RAILROAD VALLEY**  
 HOLE DIAMETER : 09.9  
 CAL STD CPS = 0000    CAL RUN CPS = 0000  
 PROBE # 9055A -238    PROBE CAL BIAS = +00000  
 TRUCK # 7740    DATA: V3L10  
 APPL. #3    D  
 JONES, F.

**VERTICAL DEVIATION**  
 COMPULOG V3L1 DEVIATION  
 HOLE ID: RR-S-T-1  
 SCALE: 1 FT/IN    + = 25 FOOT INCR  
 MAG DECL: 18.0    Δ = TOP OF ZONE  
 TRUE DEPTH: 484. FT    ◇ = BOTTOM OF ZONE  
 AZIMUTH: 92.    TRUE NORTH ↑  
 DISTANCE: 3.7 FT



CENTURY GEOPHYSICAL CORP. PART NO. 786-0022

122  
123  
124  
125