

CENTURY GEOPHYSICAL CORPORATION

Tulsa, Oklahoma

OPERATOR F. JONES DATE 09-21-80

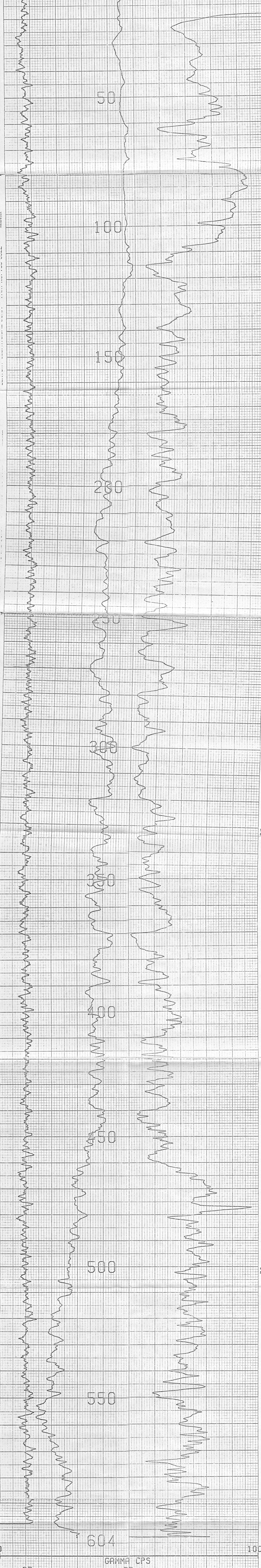
UNIT NO. 7740 FIELD OFFICE CARSON CITY

COMPANY FUGRO NATIONAL  
 BOREHOLE RR-S-0-2  
 AREA RAILROAD VALLEY ELEVATION  
 COUNTY NYE STATE NEVADA  
 SECTION 17bd TOWNSHIP 10N RANGE 58E

HOLE DATA  
 TOTAL DEPTH - DRILLER : 600 BIT SIZE : 9.9"  
 TOTAL DEPTH - LOGGER : 604 CASING - TYPE & SIZE : NONE  
 LOGGING SPEED : 60/MIN BOREHOLE FLUID : MUD  
 REFERENCE LEVEL : G.L. FLUID RESISTIVITY : 49.6 @ 72°F  
 PROBE NO. : 9055A-238 SOFTWARE LEVEL : V3L10

EQUIPMENT DATA

PROBE MODEL	9050	9050	9050	9050
PROBE NUMBER	187	217	187	217
DETECTOR TYPE	NA	NA	NA	NA
DETECTOR SIZE	10" x 10"	10" x 10"	10" x 10"	10" x 10"
STD. FACTOR	1.0 x 10 <sup>-11</sup>	1.0 x 10 <sup>-11</sup>	1.0 x 10 <sup>-11</sup>	1.0 x 10 <sup>-11</sup>
STD. GEOMETRY	1.0	1.0	1.0	1.0
CABLE MODEL LOG	1.0	1.0	1.0	1.0
CABLE TYPE	1.0	1.0	1.0	1.0
K FACTOR	1.0	1.0	1.0	1.0
DEAFINE	1.0	1.0	1.0	1.0
TEST FREQUENCY	1.0	1.0	1.0	1.0
WATER FACTOR	1.0	1.0	1.0	1.0
CORRECT FACTOR	1.0	1.0	1.0	1.0



COMPU-LOG V3L9 PLOT 09-21-80  
 RR-S-0-2  
 FUGRO NATIONAL  
 RAILROAD VALLEY  
 HOLE DIAMETER : 09.9  
 CAL STD CPS = 8866 CAL RUN CPS = 8866  
 PROBE # 9055A-238 PROBE CAL BIAS = +00000  
 TRUCK # 7740 DATA: V3L10  
 APPL.#3 D  
 JONES, F.

VERTICAL DEVIATION

COMPULOG V3L1 DEVIATION

HOLE ID: RR-S-0-2

SCALE: 1 FT/IN  
 MAG DECL: 18.0  
 TRUE DEPTH: 604. FT  
 AZIMUTH: 223.  
 DISTANCE: 7.9 FT

+ = 25 FOOT INCR  
 Δ = TOP OF ZONE  
 ○ = BOTTOM OF ZONE  
 TRUE NORTH ↑

