



CENTURY GEOPHYSICAL CORPORATION
Tulsa, Oklahoma

OPERATOR: F. JONES DATE: 09-19-80
UNIT NO.: 7740 FIELD OFFICE: CARSON CITY

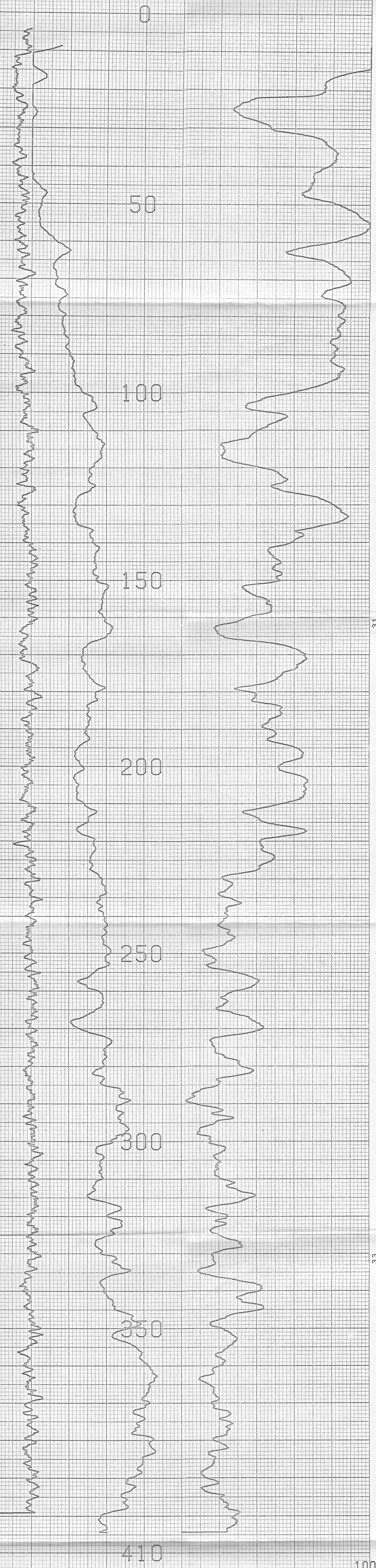
COMPANY: FUGRO NATIONAL
BOREHOLE: RR-S-T-2
AREA: RAILROAD VALLEY
COUNTY: NYE STATE: NEVADA
SECTION: 17bd TOWNSHIP: 10N RANGE: 58E

EQUIPMENT DATA
PROBE MODEL: 9010 9020 9030S 9040
PROBE DIAMETER: 1.87 2.2 2.87 3.4
DETECTOR TYPE: NI NI NI NI
DETECTOR SIZE: 8.5" x 12" 1.25" x 4.5" 8.5" x 4.5" 5" x 12"
STD. K FACTOR: 1.50 x 10⁻¹¹ 1.00 x 10⁻¹¹ 1.00 x 10⁻¹¹ 1.00 x 10⁻¹¹
STD. DEADTIME: 1.24000 1.19000 1.24000 1.24000
CALIB. MODEL LOC: --- --- G.J. ---
CALIB. DATE: --- --- 6-9-80 ---
DEADTIME: --- --- 5.0 x 10⁻⁶ ---
TEST FACTORS: --- --- 1.1 x 10¹⁶ ---
WATER FACTOR: --- --- --- ---
CASING FACTOR: --- --- --- ---

HOLE DATA
TOTAL DEPTH - DRILLER: 410 BIT SIZE: 12.3"
TOTAL DEPTH - LOGGER: 411 CASING - TYPE & SIZE: NONE
TOTAL FOOTAGE LOGGED: 411 CASING DEPTH: NONE
LOGGING SPEED: 60/MIN BOREHOLE FLUID: MUD
REFERENCE LEVEL: G.L. FLUID RESISTIVITY: 159.2 @ 73°F
PROBE NO.: 9055A-238 SOFTWARE LEVEL: V3L10

REMARKS:

DENSITY	DETECTOR TYPE	---	---	---	---
SOURCE STRENGTH	DETECTOR SIZE	---	---	---	---
SOURCE SPACING	SOURCE TYPE	---	---	---	---
	SOURCE NO.	---	---	---	---
	SOURCE STRENGTH	---	---	---	---
	SOURCE SPACING	---	---	---	---
	DETECTOR TYPE	---	---	---	---
	DETECTOR SIZE	---	---	---	---
	SOURCE TYPE	---	---	---	---
	SOURCE NO.	---	---	---	---
	SOURCE STRENGTH	---	---	---	---
	SOURCE SPACING	---	---	---	---
	SINGL. PT. RESISTANCE	1.4" x 2.5L	---	1.4" x 2.5L	1.1" x 2.5L
	RESISTIVITY	---	F FOCUSED	---	---
	SELF POTENTIAL	---	---	---	---
	TEMPERATURE	---	---	---	---
	DEVIATION	---	---	400 YES	---
	CAUTION	---	---	---	---

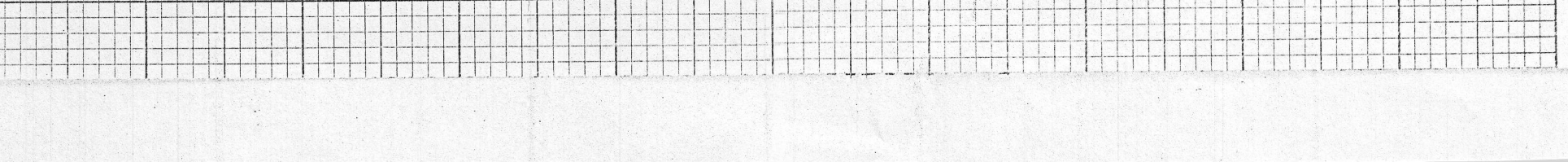


GAMMA CPS: -19 to 25
S.P. MV: 44 to 74
RESISTANCE OHMS: 44 to 74

COMPU-LOG V3L9 PLOT 09-19-80
RR-S-T-2
FUGRO NATIONAL
RAILROAD VALLEY
HOLE DIAMETER: 12.3

CAL STD CPS = 0000 CAL RUN CPS = 0000
PROBE # 9055A -238 PROBE CAL BIAS = +00000
TRUCK # 7740 DATA: V3L10
APPL. #3 D
JONES, F.

VERTICAL DEVIATION
COMPULOG V3L1 DEVIATION
HOLE ID: RR-S-T-2
SCALE: 1 FT/IN
MAG DECL: 16.0
TRUE DEPTH: 411. FT
AZIMUTH: 115.
DISTANCE: 1.9 FT
TRUE NORTH ↑
+ = 25 FOOT INCR
Δ = TOP OF ZONE
◇ = BOTTOM OF ZONE



CENTURY GEOPHYSICAL CORP. PART NO. 786-0022

31 33 35