

CENTURY GEOPHYSICAL CORPORATION  
Tulsa, Oklahoma

OPERATOR: F. JONES DATE: 08-11-80  
UNIT NO.: 7740 FIELD OFFICE: CARSON CITY

COMPANY: FUGRO NATIONAL  
BOREHOLE: SP-S-0-1  
AREA: SPRING VALLEY

EQUIPMENT DATA

PROBE MODEL	9010	9015	9020	9025
PROBE DIAMETER	1 1/2"	2"	1 3/4"	1 1/2"
DETECTOR TYPE	NM	NM	NM	NM
COUNTER SIZE	1 1/2" x 1 1/2"	1 1/2" x 1 1/2"	1 1/2" x 1 1/2"	1 1/2" x 1 1/2"
STL FACTOR	1.0E-11	1.0E-11	1.0E-11	1.0E-11
STL BEADLINE	1/16"	1/16"	1/16"	1/16"
CALIB. MODEL LOC.			G. J.	
COUNTER			6-9-80	
F. FACTOR			5.0 x 10^-6	
DEATHLINE			1.1 x 10^-6	
TEST READING				
WATER FACTOR				
CASING FACTOR				

SECTION: 30AB-NE-1/4-TOWNSHIP: 9N RANGE: 68E STATE: NEVADA

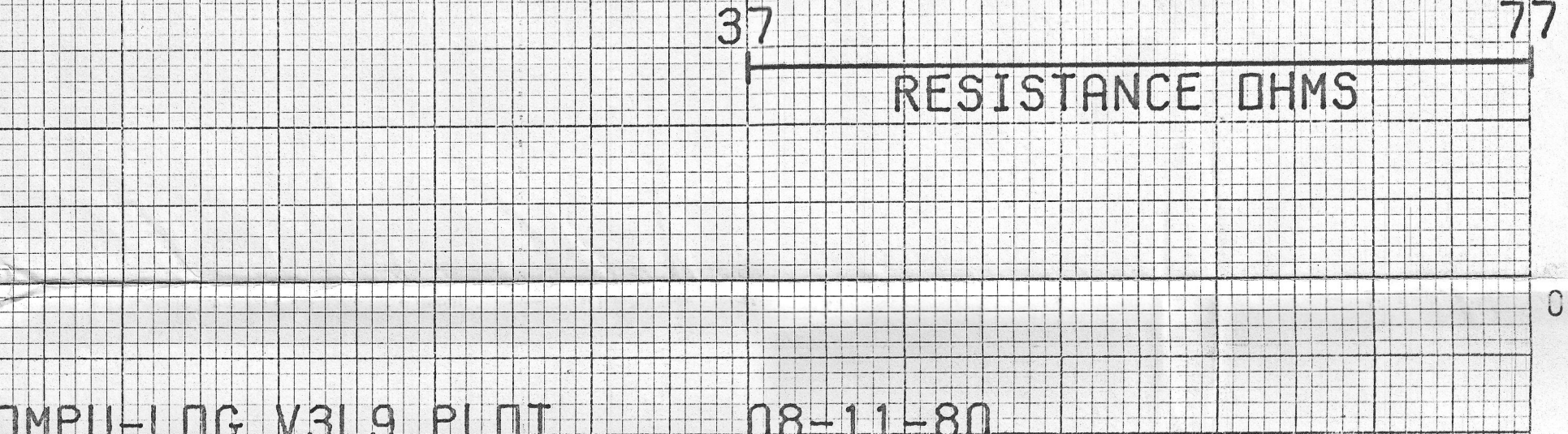
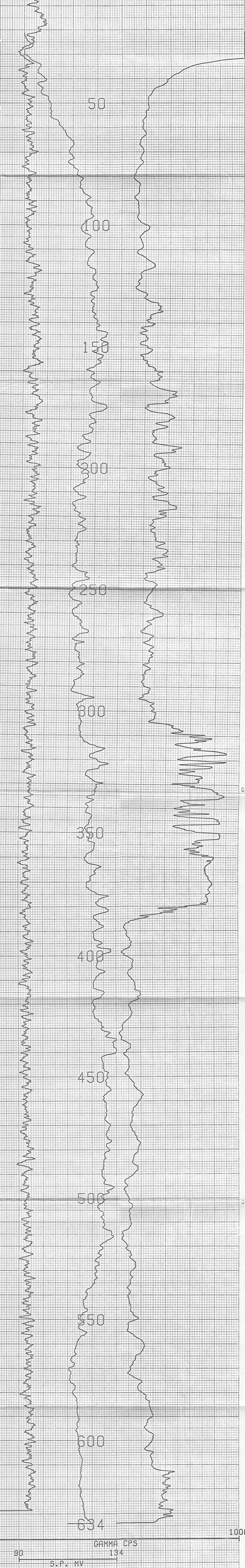
HOLES DATA

TOTAL DEPTH - DRILLER	: 650	BIT SIZE	: 9.9"
TOTAL DEPTH - LOGGER	: 634	CASING - TYPE & SIZE	: NONE
TOTAL FOOTAGE LOGGED	: 634	CASING DEPTH	: NONE
LOGGING SPEED	: 60/MIN	BOREHOLE FLUID	: MUD
REFERENCE LEVEL	: G.L.	FLUID RESISTIVITY	: 6.7 OHM-FT
PROBE NO.	: 9055A-238	SOFTWARE LEVEL	: V3L10

REMARKS:

RESISTIVITY

DETECTOR TYPE				
DETECTOR SIZE		5" x 1 1/2"		5" x 1 1/2"
SOURCE TYPE		CR		CR
SOURCE NO.				
SOURCE STRENGTH				
SOURCE SPACING				



COMPU-LOG V3L9 PLOT 08-11-80

SP-S-0-1  
FUGRO NATIONAL  
SPRING VALLEY  
HOLE DIAMETER: 09.9

CAL STD CPS = 0000 CAL RUN CPS = 0000  
PROBE # 9055A -238 PROBE CAL BIAS = +00000  
TRUCK # 7740 DATA: V3L10  
APPL. #3 D  
JONES, F.

VERTICAL DEVIATION  
COMPULOG V3L1 DEVIATION  
HOLE ID: SP-S-0-1

SCALE: 1 FT/IN  
MAG DECL: 16.0  
TRUE DEPTH: 635. FT  
AZIMUTH: 147.  
DISTANCE: 1.3 FT

TRUE NORTH ↑

