

CENTURY GEOPHYSICAL CORPORATION
Tulsa, Oklahoma

OPERATOR: F. JONES
UNIT NO.: 7740
DATE: 08-04-80
FIELD OFFICE: CARSON CITY

COMPANY: FUGRO NATIONAL

BOREHOLE: SP-S-T-1

AREA: SPRING VALLEY

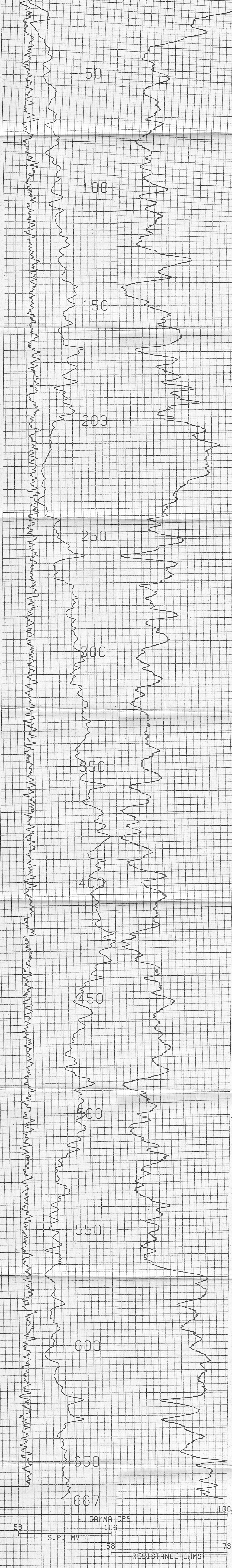
COUNTY: NEVADA

SECTION: 30AB-NE 1/4 NW 1/4 TOWNSHIP: 9N RANGE: 68E

HOLE DATA

TOTAL DEPTH - DRILLER	: 670	BIT SIZE	: 12.3"
TOTAL DEPTH - LOGGER	: 668	CASING TYPE & SIZE	: NONE
TOTAL FOOTAGE LOGGED	: 667	CASING DEPTH	: NONE
LOGGING SPEED	: 60/MIN	BOREHOLE FLUID	: MUD
REFERENCE LEVEL	: 6.1	FLUID RESISTIVITY	: 11.9 @ 40
PROBE NO.	: 9055A-238	SOFTWARE LEVEL	: V3L10

EQUIPMENT DATA			
PROBE MODEL	9050	9055	905
PROBE DIAMETER	1.5"	2"	1.5"
DETECTOR TYPE	NW	NW	NW
DETECTOR SIZE	30" x 120"	120" x 48"	48" x 48"
STIL FACTOR	1.80 x 10 ⁻⁴	3.00 x 10 ⁻⁴	1.82 x 10 ⁻⁴
STIL CALIBRATION	1/2/80	1/2/80	1/2/80
STIL WATER LOC	---	---	---
CALIB DATE	---	6-9-80	---
K FACTOR	---	5.6 x 10 ⁻⁶	---
READING	---	1.1 x 10 ⁻⁶	---
WATER FACTOR	---	---	---
DETECTOR TYPE	---	NW	NW
DETECTOR SIZE	---	24 x 18"	24 x 18"
SOURCE TYPE	---	0"	0"
SOURCE NO.	---	---	---
SOURCE STRENGTH	---	---	---
SOURCE SPACING	---	---	---
DETECTOR TYPE	---	---	NW
DETECTOR SIZE	---	---	18" x 18"
SOURCE TYPE	---	---	0"
SOURCE NO.	---	---	---
SOURCE STRENGTH	---	---	---
SOURCE SPACING	---	---	---
LANG. FT RESISTANCE	140 x 231	---	140 x 231
RESISTIVITY	---	6" PROBE	---
SOIL RESISTANCE	---	---	---
TEMPERATURE	---	---	---
DEVIATION	---	---	---
CALIBR	---	---	---



58 S.P. MV 106 GAMMA CPS
58 RESISTANCE OHMS

COMPU-LOG V3L9 PLOT 08-04-80

SP-S-T-1
FUGRO NATIONAL
SPRING VALLEY
HOLE DIAMETER : 12.3

CAL STD CPS = 0000	CAL RUN CPS = 0000
PROBE # 9055A-238	PROBE CAL BIAS = +00000
TRUCK # 7740	DATA: V3L10
APPL.#3 D	
JONES, F.	

VERTICAL DEVIATION
COMPULOG V3L1 DEVIATION
HOLE ID: SP-S-T-1

SCALE: 1 FT/IN
MAG DECL: 16.0
TRUE DEPTH: 668. FT
AZIMUTH: 64.
DISTANCE: 0.6 FT

+ = 25 FOOT INCR
Δ = TOP OF ZONE
◊ = BOTTOM OF ZONE
TRUE NORTH ↑

