



CENTURY GEOPHYSICAL CORPORATION
Tulsa, Oklahoma

OPERATOR: F. JONES
UNIT NO: 7740
DATE: 07-22-80
FIELD OFFICE: CARSON CITY

COMPANY: FUGRO NATIONAL
BOREHOLE: TU-S-0-2
AREA: TULE VALLEY
COUNTY: MILLARD
SECTION: 17NE-SW TOWNSHIP: 17S RANGE: 15W
ELEVATION: 4520
STATE: UTAH

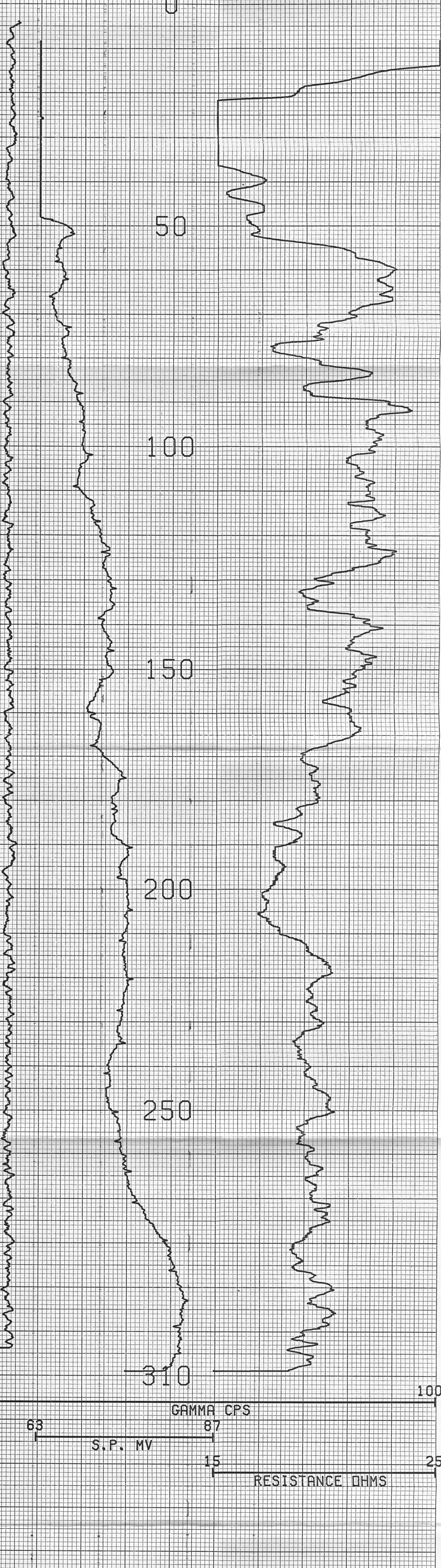
EQUIPMENT DATA			
PROBE MODEL	9010	9030	9050S
PROBE DIAMETER	1.8"	2.0"	1.8"
DETECTOR TYPE	Nd	Nd	Nd
DETECTOR SIZE	8.75" x 1.25"	1.25" x 4.5"	8.75" x 4.0"
STD. K FACTOR	1.98 x 10 ⁻³	---	5.68 x 10 ⁻³
STD. DEADTIME	1.14 sec	---	1.18 sec
CALIB. MODEL LOC.	---	---	G.J.
CALIB. DATE	---	---	6-9-80
K FACTOR	---	---	5.6 x 10 ⁻⁶
DEADTIME	---	---	1.1 x 10 ⁻⁶
TEST READING	---	---	---
WATER FACTOR	---	---	---
CASING FACTOR	---	---	---

HOLE DATA			
TOTAL DEPTH - DRILLER	: 300	BIT SIZE	: 9.9"
TOTAL DEPTH - LOGGER	: 310	CASING - TYPE & SIZE	: NONE
TOTAL FOOTAGE LOGGED	: 310	CASING DEPTH	: NONE
LOGGING SPEED	: 60/MIN	BOREHOLE FLUID	: MUD
REFERENCE LEVEL	: G.L.	FLUID RESISTIVITY	: 4.0 @ 90°F
PROBE NO.	: 9055A-238	SOFTWARE LEVEL	: V3L10

DENSITY			
DETECTOR TYPE	---	Nd	---
DETECTOR SIZE	---	5" x 1.5"	5" x 2.0"
SOURCE TYPE	---	Ci ¹³⁷	Ci ¹³⁷
SOURCE NO.	---	---	---
SOURCE STRENGTH	---	---	---
SOURCE SPACING	---	---	---

REMARKS:

NEUTRON			
DETECTOR TYPE	---	---	Nd
DETECTOR SIZE	---	---	1.8" x 6.0"
SOURCE TYPE	---	---	AmBe
SOURCE NO.	---	---	1-71-439
SOURCE STRENGTH	---	---	1Ci
SOURCE SPACING	---	---	14"



COMPU-LOG V3L9 PLOT 07-22-80
TU-S-0-2
FUGRO NATIONAL
TULE VALLEY
HOLE DIAMETER : 09.9
CAL STD CPS = 0000 CAL RUN CPS = 0000
PROBE # 9055A -238 PROBE CAL BIAS = +00000
TRUCK # 7740 DATA: V3L10
APPL.#3 D
JONES, F.

CENTURY GEOPHYSICAL CORP. PART NO. 786-0022 PRINTED IN U.S.A. 03 CENTURY GEOPHYSICAL CORP. PART NO. 786-0022 PRINTED IN U.S.A. 03 CENTURY GEOPHYSICAL CORP. PART NO. 786-0022 PRINTED IN U.S.A. 03 CENTURY GEOPHYSICAL CORP. PART NO. 786-0022 PRINTED IN U.S.A. 03 CENTURY GEOPHYSICAL CORP. PART NO. 786-0022 PRINTED IN U.S.A. 03