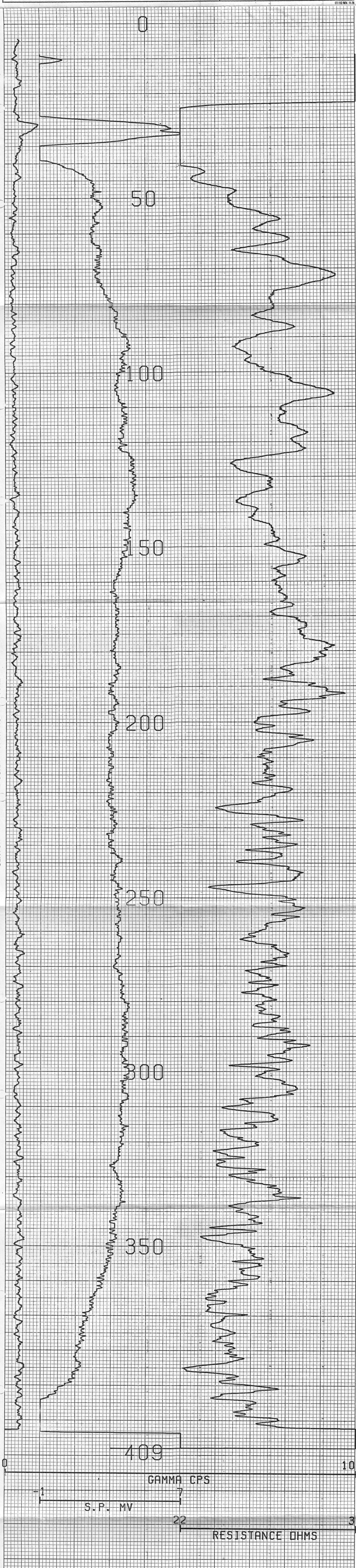
 <b>CENTURY GEOPHYSICAL CORPORATION</b> Tulsa, Oklahoma		OPERATOR <b>F. JONES</b>	DATE <b>07-11-80</b>
COMPANY <b>FUGRO NATIONAL</b>		UNIT NO. <b>7740</b>	FIELD OFFICE <b>CARSON CITY</b>
BOREHOLE <b>TU-S-T-2</b>		<b>EQUIPMENT DATA</b>	
AREA <b>TULE VALLEY</b>	ELEVATION <b>4520</b>	PROBE MODEL 9010    9020    90595    9080	PROBE DIAMETER 1.87"    2.0"    1.87"    1.4"
COUNTY <b>MILLARD</b>	STATE <b>UTAH</b>	DETECTOR TYPE 875 x 1.50"    1.25" x 1.5"    875 x 1.5"    5" x 3.0"	STD. K FACTOR 1.50 x 10 <sup>-4</sup> —    1.50 x 10 <sup>-4</sup> 1.02 x 10 <sup>-4</sup>
SECTION <b>17NE-SW</b>	TOWNSHIP <b>17S</b>	STD. DEATH TIME 1.44sec    —    1.18sec    1.44sec	CALIB. MODEL LOC. <b>G.J.</b>
<b>HOLE DATA</b>		CALIB. DATE <b>6-9-80</b>	K FACTOR <b>5.4 x 10<sup>-6</sup></b>
TOTAL DEPTH - DRILLER : <b>410</b>	BIT SIZE : <b>12.3</b>	TEST READING <b>1.1 x 10<sup>-6</sup></b>	CASING FACTOR —
TOTAL DEPTH - LOGGER : <b>409</b>	CASING - TYPE & SIZE : <b>NONE</b>	DETECTOR TYPE —    —    —    —	DETECTOR SIZE —    —    —    —
LOGGING SPEED : <b>60 MIN</b>	BOREHOLE FLUID : <b>MUD</b>	SOURCE TYPE —    —    —    —	SOURCE NO. —    —    —    —
REFERENCE LEVEL : <b>G.L.</b>	FLUID RESISTIVITY : <b>10.8 @ 67°F</b>	SOURCE STRENGTH —    —    —    —	SOURCE SPACING —    —    —    —
PROBE NO. : <b>9055A-238</b>	SOFTWARE LEVEL : <b>V3L10</b>	SINGL. PT RESISTANCE 1.4'D x 2.5'L    —    1.4'D x 2.5'L    1.7'D x 2.5'L	RESISTIVITY —    —    —    —
REMARKS:		SELF POTENTIAL YES    —    YES    YES	TEMPERATURE —    —    —    —
		DEVIATION —    —    —    —	CALIPER —    YES    —    —



COMPU-LOG V3L9 PLOT    07-11-80  
**TU-S-T-2**  
**FUGRO NATIONAL**  
**TULE VALLEY**  
 HOLE DIAMETER : 12.3  
 CAL STD CPS = 8000    CAL RUN CPS = 8000  
 PROBE # 9055A -238    PROBE CAL BIAS = +00000  
 TRUCK # 7740    DATA: V3L10  
 APPL. #3    D  
 JONES, F.

CENTURY GEOPHYSICAL CORP. PART NO. 786-0022

CENTURY GEOPHYSICAL CORP. PART NO. 786-0022