

CENTURY GEOPHYSICAL CORPORATION
Tulsa, Oklahoma

OPERATOR **F. JONES** DATE **07-19-80**
UNIT NO. **7740** FIELD OFFICE **CARSON CITY**

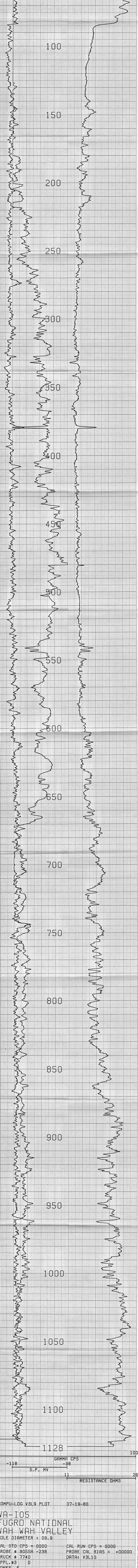
EQUIPMENT DATA

PROBE MODEL	100	100	100	100	100
PROBE DIMENSIONS	10"	10"	10"	10"	10"
SECTION TYPE	10"	10"	10"	10"	10"
SECTION SIZE	10"	10"	10"	10"	10"
SECTION WEIGHT	10"	10"	10"	10"	10"
SECTION LENGTH	10"	10"	10"	10"	10"
SECTION SPACING	10"	10"	10"	10"	10"
SECTION TYPE	10"	10"	10"	10"	10"
SECTION SIZE	10"	10"	10"	10"	10"
SECTION WEIGHT	10"	10"	10"	10"	10"
SECTION LENGTH	10"	10"	10"	10"	10"
SECTION SPACING	10"	10"	10"	10"	10"
SECTION TYPE	10"	10"	10"	10"	10"
SECTION SIZE	10"	10"	10"	10"	10"
SECTION WEIGHT	10"	10"	10"	10"	10"
SECTION LENGTH	10"	10"	10"	10"	10"
SECTION SPACING	10"	10"	10"	10"	10"
SECTION TYPE	10"	10"	10"	10"	10"
SECTION SIZE	10"	10"	10"	10"	10"
SECTION WEIGHT	10"	10"	10"	10"	10"
SECTION LENGTH	10"	10"	10"	10"	10"
SECTION SPACING	10"	10"	10"	10"	10"

FUGRO NATIONAL
WA-10-1
WAH WAH VALLEY ELEVATION **4752**
BEAVER STATE **UTAH**
25AB TOWNSHIP **14W** RANGE **26S**

HOLE DATA
TOTAL DEPTH - DRILLER **1250** BIT SIZE **9.9"**
TOTAL DEPTH - LOGGER **1128** CASING DEPTH **36'** / **10-20**
TOTAL FOOTAGE LOGGED **1128**
LOGGING SPEED **60/ MIN** MUD **MUD**
REFERENCE LEVEL **G.L.** FLUID RESISTIVITY **2.8** / **95**
PROBE NO. **9055A-238** SOFTWARE LEVEL **V3L10**

REMARKS: **SCALE SELECTION BY CLIENT TO GIVE GREATER DEFINITION TO AREA OF INTEREST.**



COMPU-LOG V3L9 PLOT 07-19-80
WA-105
FUGRO NATIONAL
WAH WAH VALLEY
HOLE DIAMETER : 09.9
CAL STD CPS = 0000 CAL RUN CPS = 0000
PROBE # 9055A-238 PROBE CAL BIAS = +00000
TRUCK # 7740 DATA: V3L10
APPL. #3 D
JONES, F.