

Schlumberger WITH LINEAR CORRELATION LOG		DUAL INDUCTION - SFL	
COMPANY Red Hill Geothermal Inc.	WELL Vulcan IW-8	FIELD Salton Sea	STATE California
COUNTY Imperial	LOCATION 35001 E. & 2895 S. of	LOCALITY 2 IN/100 FT	OTHER SERVICE FEDERAL SBOI
COUNTRY USA	WELL 025-31207	SECTION 34	TWP 11S
RANGING 2000 Feet Datum	LOGS MEASURED FROM 2000 Feet Datum	CHANGING CALIBER 13.30" @ 6182.0 F	CHANGING CALIBER 13.30" @ 6182.0 F
CHANGING CALIBER 13.30" @ 6182.0 F	CHANGING CALIBER 13.30" @ 6182.0 F	CHANGING CALIBER 13.30" @ 6182.0 F	CHANGING CALIBER 13.30" @ 6182.0 F

The well name, location and borehole reference data were furnished by the customer.

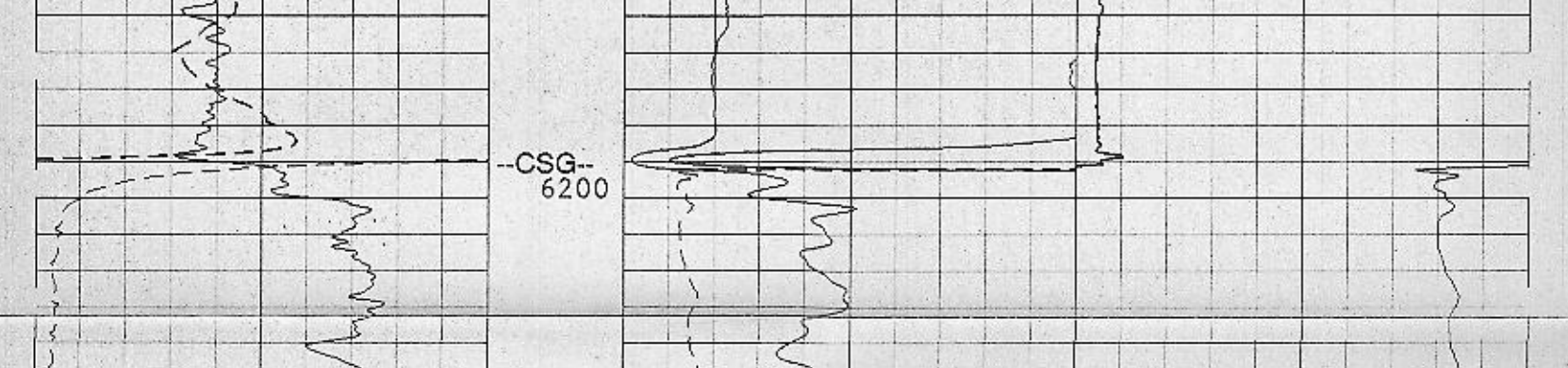
All interpretations are opinions based on inferences from electrical or other measurements and we cannot and do not guarantee the accuracy or correctness of any interpretations, and we shall not, except in the case of gross or willful negligence on our part, be liable or responsible for any loss, costs, damages or expenses incurred or sustained by anyone resulting from any interpretations made by any of our officers, agents or employees. These interpretations are also subject to Clause 4 of our General Terms and Conditions as set out in our current Price Schedule.

Run No.	Four
Service Order No.	817432
Drilling Fluid Level	
Salinity	
Rmc @ BHT	202 CHMM @ 320 DEGF @
Rmc @ BHT	374 CHMM @ 320 DEGF @
Logging Speed	1800.0 F/HR

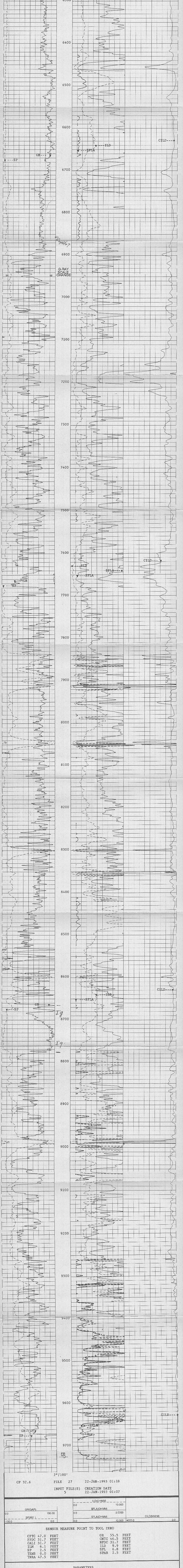
EQUIPMENT DATA	
Tool Number 1	DS 1224
Tool Number 2	DIC 1298
Tool Number 3	CNTA 2459
Tool Number 4	PGB 670
Tool Number 5	EM 368
Tool Number 6	SHT
Tool Number 7	BSC-SA
Tool Number 8	NLM 1375
Tool Number 9	
Tool Number 10	
Tool Number 11	
Tool Number 12	

REMARKS:
 Thank You for using Schlumberger.
 Repeat section logged with caliper closed as discussed with client.
 Repeat section depth interval discussed with client.
 Scales for DFHI and NPHI discussed with client.
 Gamma Ray scale changed at 8950 F.

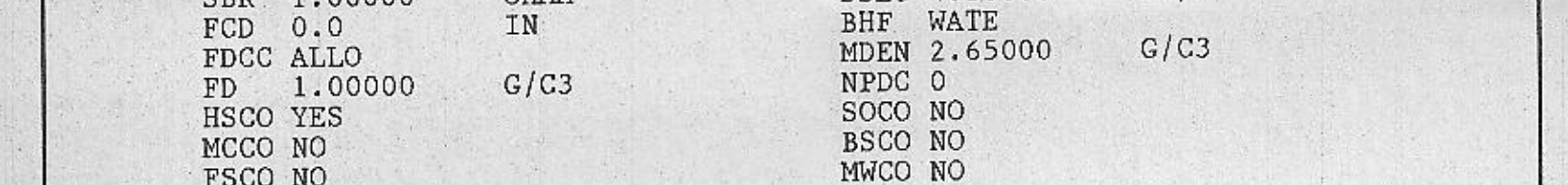
ACCUMULATED INTEGRATION VALUES SUMMARY:
 Integrated Hole Volume: 3282.38 F3 FROM 9720.00 F TO 6192.00 F
 Integrated Cement Volume: 3282.38 F3 FROM 9720.00 F TO 6192.00 F
 (ASSUMING 0.0 IN O.D. CASING)



CP 32.6 FILE 27 22-JAN-1993 01:32
 INPUT FILE(S) 5 CREATION DATE 22-JAN-1993 01:07



CP 32.6 FILE 27 22-JAN-1993 01:18
 INPUT FILE(S) 5 CREATION DATE 22-JAN-1993 01:07



SENSOR MEASURE POINT TO TOOL ZERO

CPTC 47.0 FEET	GR 55.5 FEET
FDCC 31.7 FEET	CHMM 46.5 FEET
CALI 31.7 FEET	NPHI 31.7 FEET
ILM 6.1 FEET	ILD 9.9 FEET
SP 2.5 FEET	SFL 6.8 FEET
TENS 0.0 FEET	SPAR 2.5 FEET
TRRA 47.5 FEET	

PARAMETERS			
NAME	VALUE	UNIT	
PP RECO	0.0	F	
SRHD	8.49900	LB/G	
SHR	1.00000	HR/M	
FCD	0.0	IN	
FDCC ALLO	0.0	MM/M	
FD	1.00000	G/C3	
HSCC YES			
MCCO NO			
PSCO NO			
PTCO NO			
SDAT	500000	PPH	
SOCC	NO	DE/F	
ANGL	0.0		
BHL WATE			
MATR SAND			
NCJT GSRV			
CSSE	280.000	DEGF	
BHT	280.000	DEGF	
MRT	282.000	DEGF	
RMFS	370000	CHMM	
NST	92.0000	DEGF	
BS	12.0000	IN	
DO	0.0	F	
HSEC	6.39600	MM/M	
DSEC	4.10000	MM/M	
BHF WATE			
MBEM	2.65000	G/C3	
SOCO NO			
BSCO NO			
MCCO NO			
CCCO NO			
MCCR	NATU		
FSAL	-50000.0	PPH	
GCED	0100000	DE/F	
DPPM	STAN		
HC	CALL		
CH	CALL		
SHT	50.0000	DEGF	
TDL	9720.00	F	
DFD	9.50000	LB/G	
HRCC	NO		
RMS	252000	CHMM	
MSY	18.0000	DEGF	
BIS	OPEN		

COMPANY	Red Hill Geothermal Inc.	SCHL FR	9716.0 F
WELL	Vulcan IW-8	SCHL TD	9724.0 F
FIELD	Salton Sea	DFLR TD	9720.0 F
COUNTRY	Imperial	Elev:	KB -197.0 F
STATE	California	GL	-223.0 F