



COMPENSATED DENSITY LOG

COMPANY **AMAX EXPLORATION INCORPORATED**

WELL **MC CBV 14-7**

FIELD **DEZIL VALLEY**

COUNTY **CHURCHILL** STATE **NEVADA**

LOCATION **N/A**

Other Services: **DIBL, CAVL**

Sec **7** Top **23 N.** Row **40 E.**

Log Measured From **S. L.** Elev **5560** Elev **K.R. N/A**

Dip **02-23-80** Dip **DIRE**

Depth—Order **1966**

Depth—Whts **1966**

Run Log (ft) **1962**

Top Log (ft) **505**

Excess—Order **2795 505**

Excess—Whts **505**

Depth **1962**

Type Fluids **GEL-WATER**

Spms Used **N/A**

Source of Spms **PIT**

Fl. % Meas Temp **N/A**

R. % Meas Temp **N/A**

IC % UNIT **N/A**

Time Temp Cor **1.51 F. SHT**

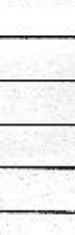
Max. Rec. Temp **125 F. SHT**

Checked By **D.W. TAYLOR**

Witnessed By **GROSS**

Reproduced By **Petroleum Information Corporation**
 Houston, Texas 77001

REFERENCE K **9262Y**



COMPLETION RECORD

SPUD DATE _____

COMP DATE _____

DST RECORD _____

API NO. _____

CASING RECORD _____

PERFORATING RECORD _____

ACID FRAC SHOT _____

IP _____

GOR _____ GR

TP _____ CP

REMARKS: _____

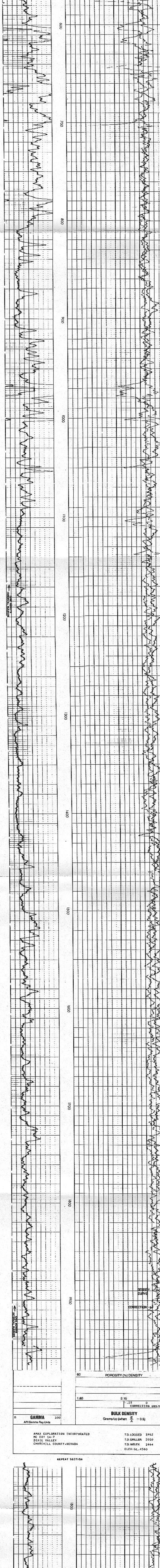
REPRODUCTION FOR RESALE PROHIBITED

GAMMA RAY				EQUIPMENT DATA				GAMMA DENSITY					
Run No	ONE	Run No	ONE	Run No	ONE	Run No	ONE	Run No	ONE	Run No	ONE	Run No	ONE
Top Meter No	102-A	Log Type	CONCRETE	Log Type	CONCRETE	Log Type	CONCRETE	Log Type	CONCRETE	Log Type	CONCRETE	Log Type	CONCRETE
Depth Meter No	3 5/8	Tool Model No	125	Tool Model No	125	Tool Model No	125	Tool Model No	125	Tool Model No	125	Tool Model No	125
Type	SPLIT	Detector Model No	127	Detector Model No	127	Detector Model No	127	Detector Model No	127	Detector Model No	127	Detector Model No	127
Length	N/A	Type	SCINT.	Type	SCINT.	Type	SCINT.	Type	SCINT.	Type	SCINT.	Type	SCINT.
Distance to Source	240	Source Model No	DCS	Source Model No	DCS	Source Model No	DCS	Source Model No	DCS	Source Model No	DCS	Source Model No	DCS
		Spms No	N/A	Spms No	N/A	Spms No	N/A	Spms No	N/A	Spms No	N/A	Spms No	N/A
		Type	5 137	Type	5 137	Type	5 137	Type	5 137	Type	5 137	Type	5 137
		Strength	500 mc	Strength	500 mc	Strength	500 mc	Strength	500 mc	Strength	500 mc	Strength	500 mc

GENERAL				LOGGING DATA				GAMMA DENSITY											
Run No	ONE	Depth	505	Speed	25	F.C. Sec	1	Spms	100	API G R U-M	30	T.C. Sec	5	Spms	100	Depth	505	Depth	505

GAMMA				BULK DENSITY			
API Gamma Ray Units 100;				Grams/cc (when $\frac{Z}{A} = 0.5$)			
				CORRECTION GMS/CC			
				- .25 0 + .25			
				1.65 2.15 2.65			

GAMMA				BULK DENSITY			
API Gamma Ray Units 100;				Grams/cc (when $\frac{Z}{A} = 0.5$)			
				CORRECTION GMS/CC			
				- .25 0 + .25			
				1.65 2.15 2.65			



GAMMA				BULK DENSITY			
API Gamma Ray Units 100;				Grams/cc (when $\frac{Z}{A} = 0.5$)			
				CORRECTION GMS/CC			
				- .25 0 + .25			
				1.65 2.15 2.65			

AMAX EXPLORATION INCORPORATED
 MC CBV 14-7
 DEZIL VALLEY
 CHURCHILL COUNTY, NEVADA

T.D. LOGGED 2962
 T.D. DRILLER 2010
 T.D. WELEX 1464
 ELEV-GC, 4560

REPEAT SECTION

