

R.41 E

R.42 E

R.43 E

R.44 E

R.45 E

R.7 W

IDAHO

R.6 W

T.11 N  
(IDAHO)

T.15 S

T.16 S

T.17 S

T.18 S

T.19 S

T.20 S

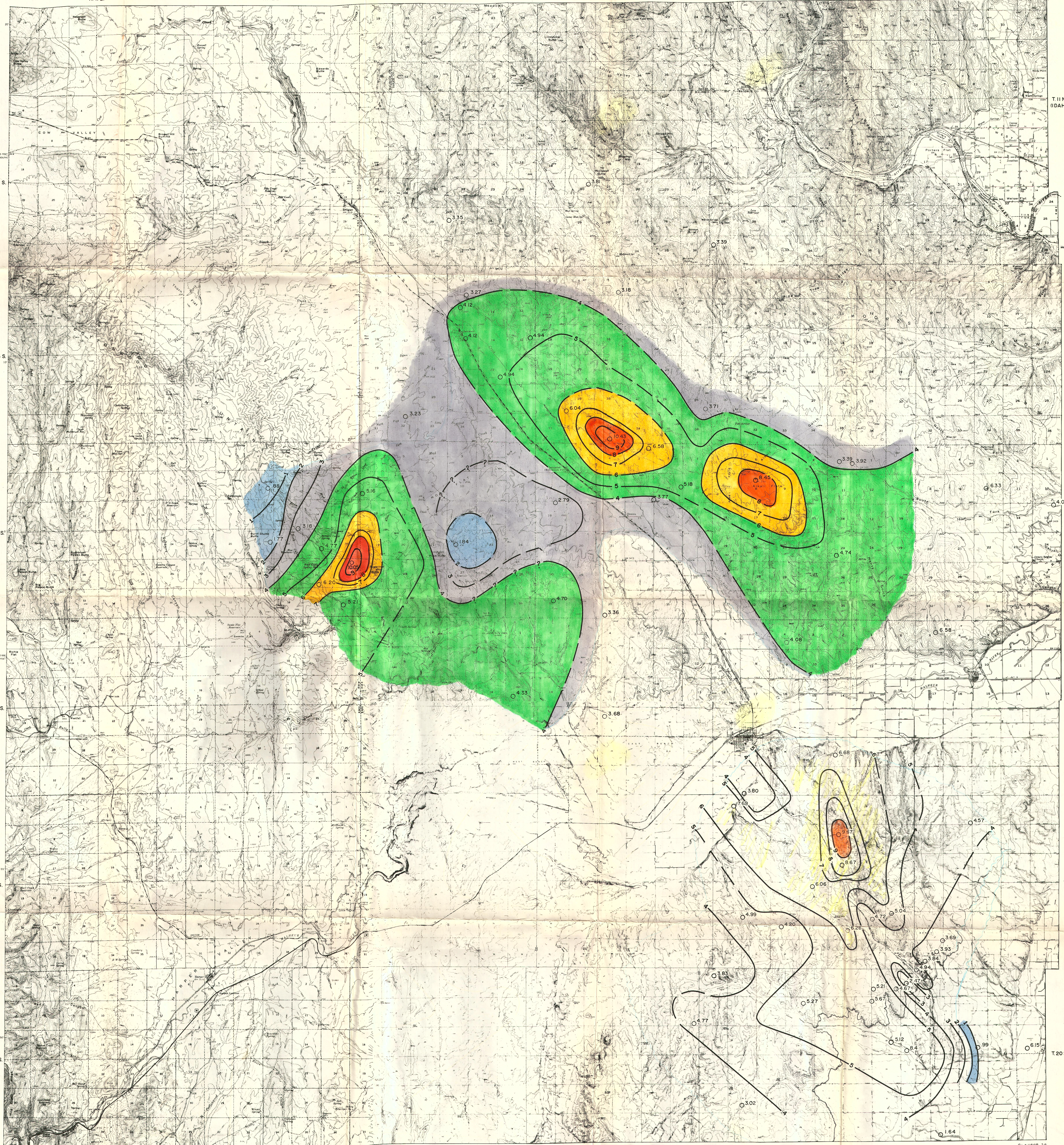
T.16 S

T.17 S

T.18 S

T.19 S

T.20 S



R.41 E

R.42 E

R.43 E

R.44 E

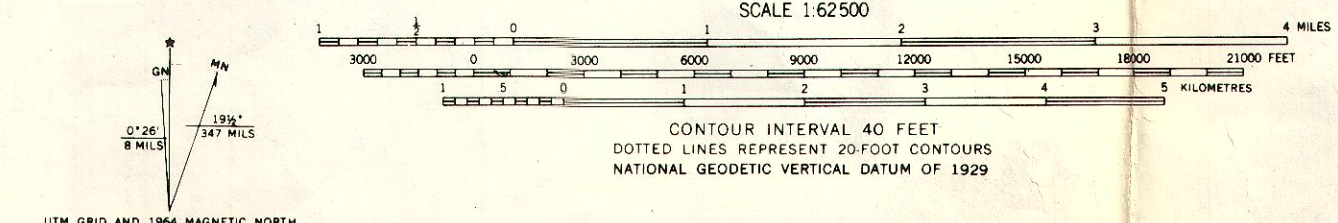
R.45 E

*Use data available 7/3/78*

GRACE GEOTHERMAL CORPORATION

TEMPERATURE GRADIENT  
VALE, NORTH VALE, & BULLY CREEK  
MALHEUR COUNTY, OREGON

DATE: 3-78



CONTOUR INTERVAL: 40 FEET  
DOTTED LINES REPRESENT APPROXIMATE BOUNDARIES  
NATIONAL GEODETIC SURVEY, DIVISION OF SURVEYING