

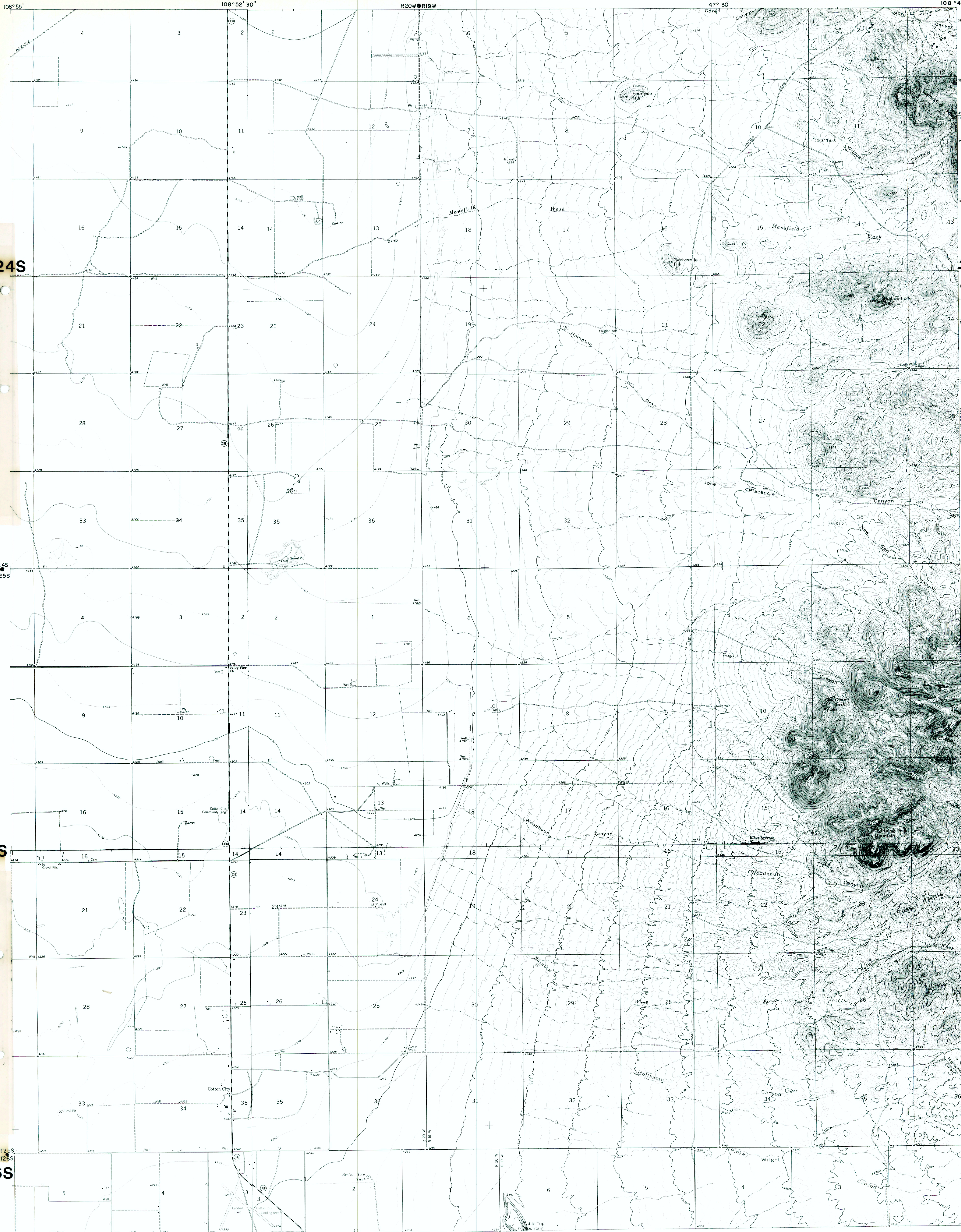
R20W

R19W

108°52'30"

108°45'32"15"

R20W R19W



T24S

T24S

T24S

T25S

T25S

T25S

T26S

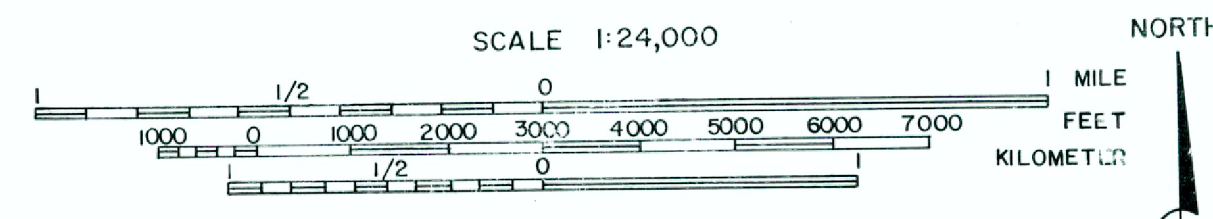
T26S

R20W

R19W

108°55'

108°45'



AMAX EXPLORATION, INC.
 A SUBSIDIARY OF AMEC INC.
GEOTHERMAL BRANCH
ANIMAS
 HIDALGO COUNTY-NEW MEXICO

SOURCE: _____ DRAWN BY: _____ DATE: _____