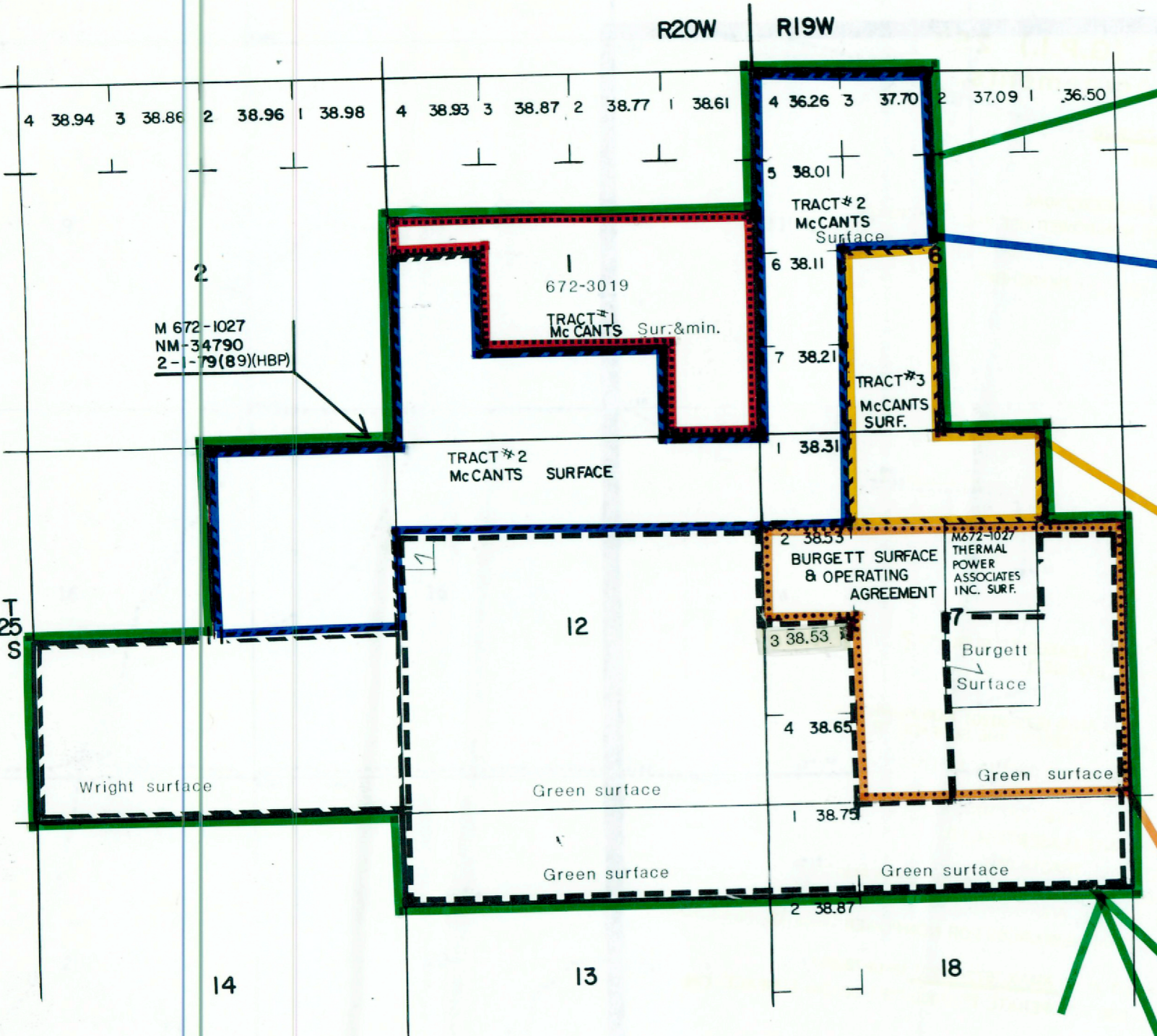


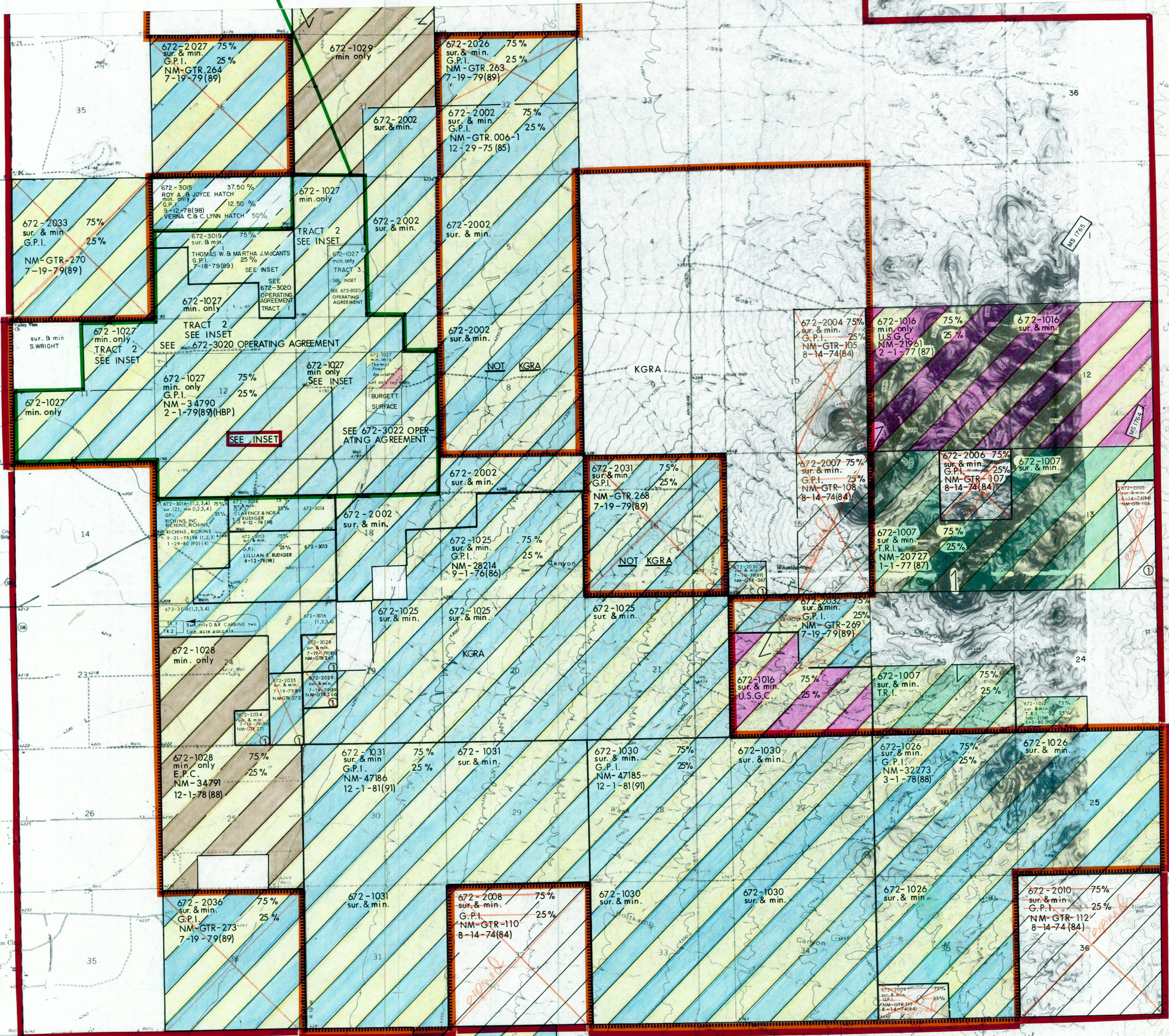
INSET TO ANIMAS - NEW MEXICO LAND STATUS MAP 5/18/84

AMAX FED. LEASE #672-1027 (min. only) NM-34790 and FEE LEASE #672-3019 (Surface & Minerals) AMAX owns 75% Geothermal Properties, Inc. (G.P.I.) 25% also McCants and Burgett Agreements.

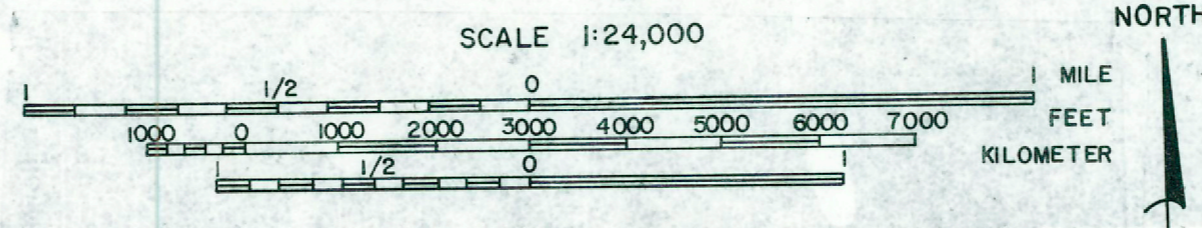


McCants Operating Agreement #72-3020
 TRACT # 1 1/2 AC 672-3019 7-18-79(89)
 TRACT # 2 1/2 AC 672-3019 7-18-79(89)
 TRACT # 3 1/2 AC 672-3019 7-18-79(89)
 TRACT # 4 1/2 AC 672-3019 7-18-79(89)
 TRACT # 5 1/2 AC 672-3019 7-18-79(89)
 TRACT # 6 1/2 AC 672-3019 7-18-79(89)
 TRACT # 7 1/2 AC 672-3019 7-18-79(89)
 TRACT # 8 1/2 AC 672-3019 7-18-79(89)
 TRACT # 9 1/2 AC 672-3019 7-18-79(89)
 TRACT # 10 1/2 AC 672-3019 7-18-79(89)
 TRACT # 11 1/2 AC 672-3019 7-18-79(89)
 TRACT # 12 1/2 AC 672-3019 7-18-79(89)
 TRACT # 13 1/2 AC 672-3019 7-18-79(89)
 TRACT # 14 1/2 AC 672-3019 7-18-79(89)
 TRACT # 15 1/2 AC 672-3019 7-18-79(89)
 TRACT # 16 1/2 AC 672-3019 7-18-79(89)
 TRACT # 17 1/2 AC 672-3019 7-18-79(89)
 TRACT # 18 1/2 AC 672-3019 7-18-79(89)
 TRACT # 19 1/2 AC 672-3019 7-18-79(89)
 TRACT # 20 1/2 AC 672-3019 7-18-79(89)

NOTE:
 THE 7 STATE LEASES T
 EXPIRE ON AUG. 14, 1
 ARE NOT COLO
 NO'S 672-1
 6.



- AMAX
- GEOTHERMAL PROPERTIES, INC. (G.P.I.)
- AMAX GEOTHERMAL PROPERTIES, INC. (G.P.I.) 75% 25%
- THERMAL RESOURCES, INC. (T.R.I.)
- U.S. GEOTHERMAL, CORP. (U.S.G.C.)
- EARTH POWER, CORP. (E.P.C.)
-
- THERMAL POWER ASSOCIATES, INC. (SURFACE ONLY)
- SEVERED INTEREST
- LIGHTNING DOCK - KGRA (2-13-76)
- AOMI



AMAX EXPLORATION, INC.
 A DIVISION OF AMAX INC.
GEOTHERMAL BRANCH
 ANIMAS
 HIDALGO COUNTY-NEW MEXICO
 LAND STATUS
 SOURCE: DRAWN BY: ULS DATE: 5-18-84