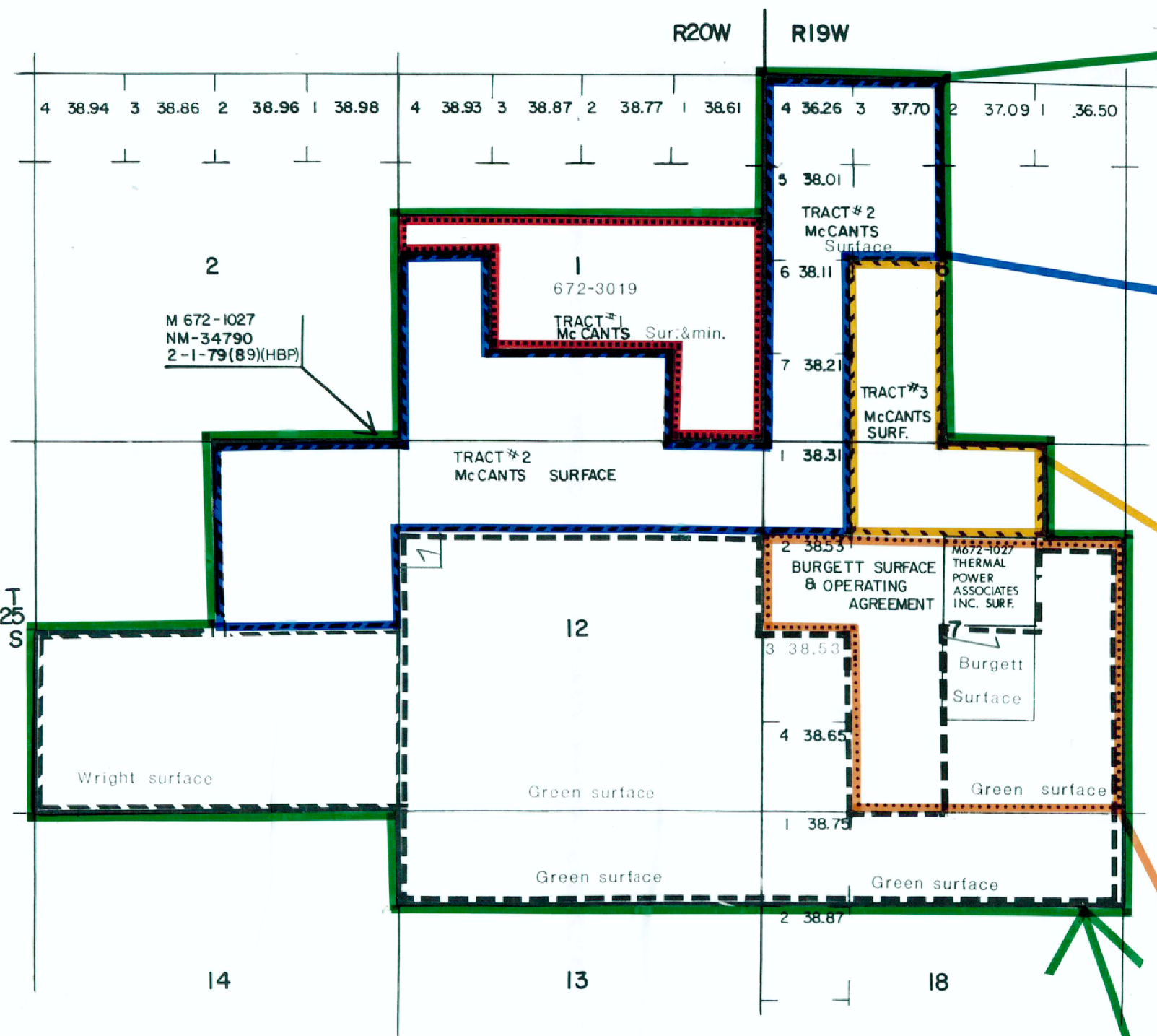


R20W

R19W

INSET TO ANIMAS - NEW MEXICO LAND STATUS MAP 5/18/84

AMAX FED. LEASE #672-1027 (min. only) NM-34790 and FEE LEASE #672-3019. (Surface & Minerals) AMAX owns 75% Geothermal Properties, Inc. (G.P.I.) 25% also McCants and Burgett Agreements.



MCCANTS OPERATING AGREEMENT 672-3020 TRACT # 1 5AM 672-3019 7-18-79(89) T25S219W SEC. 6 LOTS 3,4,5,6,7,8,9,10 MINERALS USA 672-1027 TRACT # 2 SURFACE ONLY (MCCANTS) 672-3020 7-18-79(89) MINERALS (USA) 672-1027 (2-1-79(89)HBP) T25S219W SEC. 6 LOTS 3,4,5,6,7,8,9,10 SEC. 7 LOT 1 TRACT # 2 SURFACE ONLY (MCCANTS) 672-3020 7-18-79(89) MINERALS (USA) 672-1027 (2-1-79(89)HBP) T25S219W SEC. 7 LOTS 1,2,3,4,5,6,7,8,9,10 SEC. 8 LOTS 1,2,3,4,5,6,7,8,9,10 SEC. 9 LOTS 1,2,3,4,5,6,7,8,9,10 SEC. 10 LOTS 1,2,3,4,5,6,7,8,9,10 SEC. 11 NE SEC. 12 N1/2N1/2 760 AC. MCCANTS RESERVES TO MCCANTS NON-POWER USE THE TOP 1000 FEET. TRACT # 3 SURFACE MCCANTS 672-3020 MINERALS USA 672-1027 T25S219W SEC. 6 LOT 1 SEC. 7 NEN, NNE, 160 AC. SURFACE OWNED BY MCCANTS AND LEASED TO BURGETT, ? MINERALS USA LEASED TO AMAX (672-1027) AN AGREEMENT ALLOWS MCCANTS (672-3020) NON-POWER USE BETWEEN 1001 FEET AND 1200 FEET BELOW THE SURFACE TRACT # 3. AMAX HAS: 1) ALL POWER USE ACTIVITIES ON TRACTS 2 & 3 TERMS OF FED. LEASE 672-1027. 2) ALL POWER USE ACTIVITIES ON TRACT 1 TERMS OF MCCANTS LEASE (672-3019). 3) FULL USE SURFACE TRACTS 2&3. 4) ACCESS TRACTS 12,20 FOR ALL PURPOSES PERMITTED UNDER THE FEDERAL AND MCCANTS LEASE. 5) USE GEOTHERMAL RESOURCES FOR NON-POWER USES AS REASONABLE. BURGETT OPERATING AGREEMENT WITH AMAX (672-3022) 12-14-79(88) ALLOWS BURGETT NON-POWER USE TO OPERATE TO 1000 FEET BELOW SURFACE ON: T25S219W SEC. 7: S1/2N1/2, SE, E1/2SW 400 AC. AMAX HAS THE RIGHT TO CONDUCT ALL ACTIVITIES AS PERMITTED FEDERAL LEASE 672-1027 WHICH COVERS THE MINERALS. GREEN SURFACE T25S219W SEC. 7 LOTS 3,4,5,6,7,8,9,10, ALSO BURGETT SEC. 18 LOT 1, NEN, N1/2NE, T25S219W SEC. 12 S1/2N1/2, S1/2 SEC. 12 N1/2N1/2 1076 AC. BURGETT OWNS SURFACE T25S 219W, SEC. 7: NWSE

LIFT

NOTE: THE 7 STATE LEASES THAT EXPIRE ON AUG. 14, 1984 ARE NOT COLORED. NO'S 672-2004 2005 2006 2007 2008 2009 2010 6/15/84

T 24 S

T 24 S

T 25 S

T 25 S

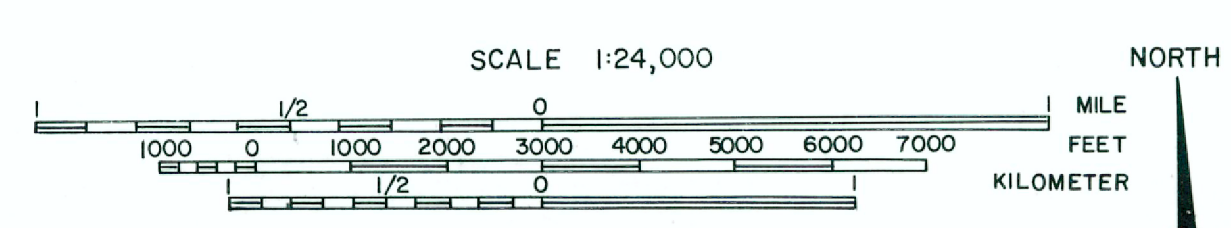
T 26 S

T 26 S

R20W

R19W

- AMAX
- GEOTHERMAL PROPERTIES, INC.
- AMAX GEOTHERMAL PROPERTIES, INC. 75% 25%
- THERMAL RESOURCES, INC.
- U.S. GEOTHERMAL, CORP.
- EARTH POWER, CORP.
- ACRES IN () ARE GROSS NUMBERS
- THERMAL POWER ASSOCIATES, INC. (SURFACE ONLY)
- SEVERED INTEREST
- LIGHTNING DOCK-KGRA (2-13-76)
- AOMI



AMAX EXPLORATION, INC. A SUBSIDIARY OF AMAX INC. GEOTHERMAL BRANCH ANIMAS HIDALGO COUNTY-NEW MEXICO LAND STATUS SOURCE: DRWN. BY: GLB DATE: 5-18-84