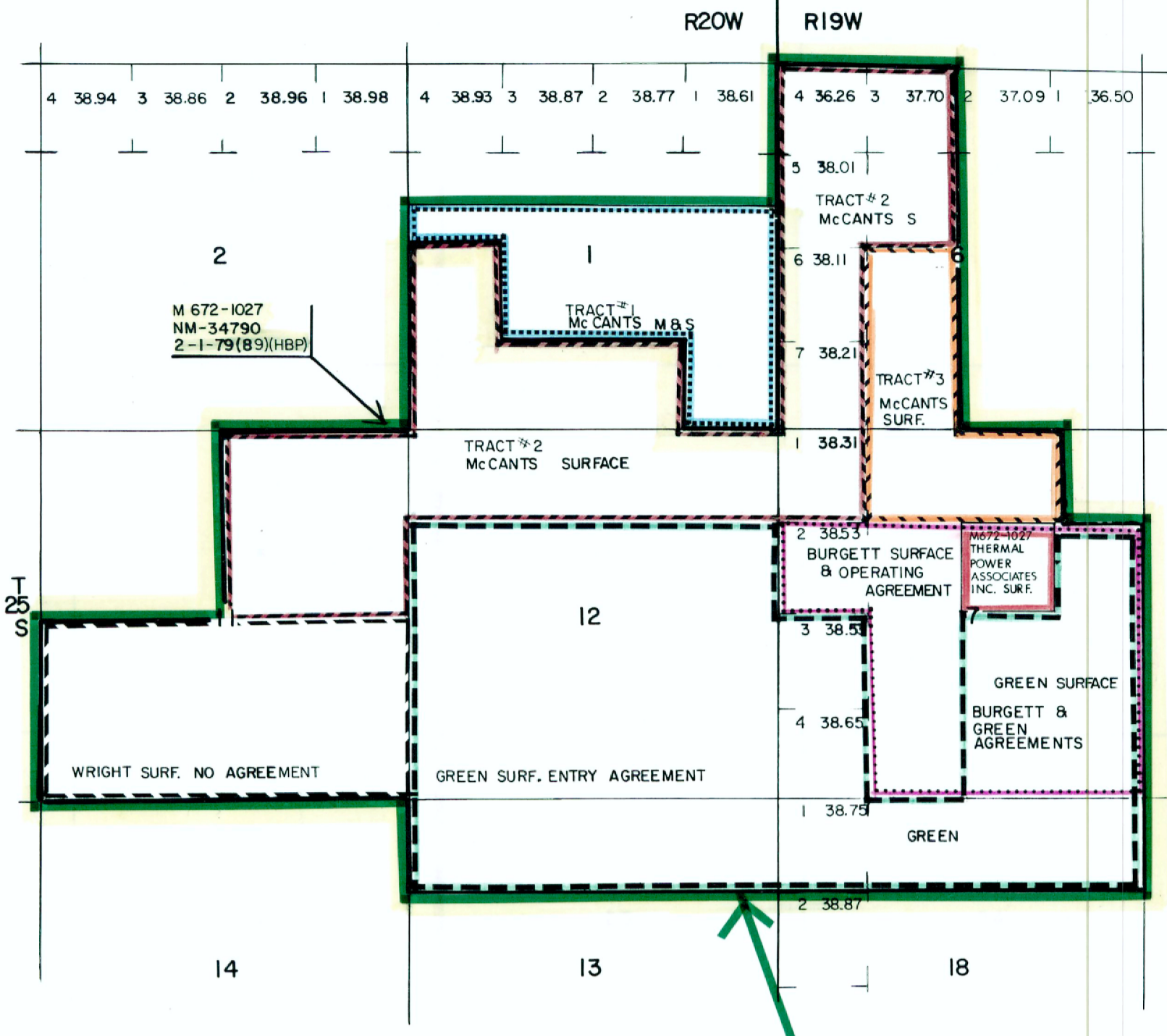


R20W

R19W

INSERT TO ANIMAS, NEW MEXICO LAND STATUS MAP 10-12-83



**AMAX FED. LEASE # M672-1027 NM-34790**  
**McCANTS, BURGESS & GREEN AGREEMENTS**  
 McCANTS OPERATING AGREEMENT 672-3020

**TRACT # 1** S&M 672-3019 7-18-79(89)  
 T25S R19W  
 SEC. 11: S1/2N1/2, N1/2SE, SE1/2SW, 240 AC  
 McCANTS RESERVES TO McCANTS NON-POWER USE THE TOP 1000'  
**TRACT # 2** SURFACE ONLY (McCANTS) 672-3020 7-18-79(89)  
 MINERALS (USA) M672-1027 (2-1-79)(89) HP

**TRACT # 3**  
 SURFACE McCANTS 672-3020  
 MINERALS (USA) 672-1027  
 T25S R19W  
 SEC. 11: W1/2SW, SE1/2W, SWSE  
 SEC. 11: NE  
 SEC. 12: N1/2N1/2 760 AC.  
 McCANTS RESERVES TO McCANTS NON-POWER USE THE TOP 1000'

**TRACT # 4**  
 SURFACE McCANTS 672-3020  
 MINERALS (USA) 672-1027  
 T25S R19W  
 SEC. 11: W1/2SW, SE1/2W, SWSE  
 SEC. 7: NEW, NWNE 160 AC.  
 SURFACE OWNED BY McCANTS AND LEASED TO BURGESS & GREEN  
 MINERALS (USA) LEASED TO AMAX (672-1027)

AN AGREEMENT ALLOWS MC McCANTS (672-3020) NON-POWER USE BETWEEN 1001 FEET AND 1200 FEET BELOW THE SURFACE TRACT # 3.  
 AMAX HAS: 1) ALL POWER USE ACTIVITIES ON TRACTS 2 & 3  
 TERMS OF FED. LEASE 672-1027.  
 2) ALL POWER USE ACTIVITIES ON TRACT 1  
 TERMS OF McCANTS LEASE (672-3019).  
 3) FULL USE SURFACE TRACTS 2&3.  
 4) ACCESS TRACTS 1, 2&3 FOR ALL PURPOSES PERMITTED UNDER THE FEDERAL AND McCANTS LEASE.  
 5) USE GEOTHERMAL RESOURCES FOR NON-POWER USES AS REASONABLE.

**BURGESS OPERATING AGREEMENT WITH AMAX (672-3022) 12-14-78(86)**  
 ALLOWS BURGESS NON-POWER USE TO OPERATE TO 1000 FEET BELOW SURFACE ON:  
 T25S R19W  
 SEC. 7: S1/2N1/2, SE, E1/2SW 400 AC.  
 AMAX HAS THE RIGHT TO CONDUCT ALL ACTIVITIES AS PERMITTED UNDER FEDERAL LEASE 672-1027 WHICH COVERS THE MINERALS.

**GREEN SURFACE ENTRY AGREEMENT 672-3023 1-1-83(84)**  
 T25S R19W  
 SEC. 7: LOTS 3&4, SE, SE1/2SW 400 AC.  
 SEC. 18: LOT 1, NEW, N1/2NE  
 T25S R19W  
 SEC. 12: S1/2N1/2, S1/2  
 SEC. 13: N1/2N1/2 1076 AC.

T 2 4 S

T 2 4 S

T 2 5 S

T 2 5 S

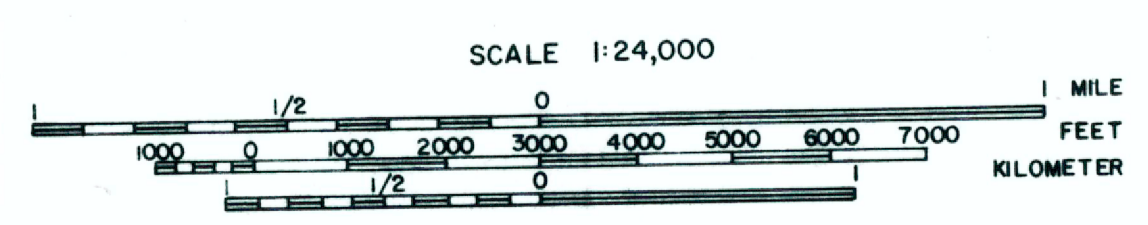
T 2 6 S

T 2 6 S

R20W

R19W

- AMAX
- CHEVRON
- AMINOIL USA
- THERMAL RESOURCES INC.
- THERMAL POWER ASSOCIATES INC.
- U.S. GEOTHERMAL
- SUN OIL
- SEVERED INTEREST
- PROPOSED UNIT BOUNDARY 10-19-83
- AOMI



**AMAX** EXPLORATION INC.  
 GEOTHERMAL BRANCH  
 ANIMAS, NEW MEXICO  
 LAND STATUS  
 SOURCE: 10-12-83

*Handwritten notes:*  
 5-18-84  
 84