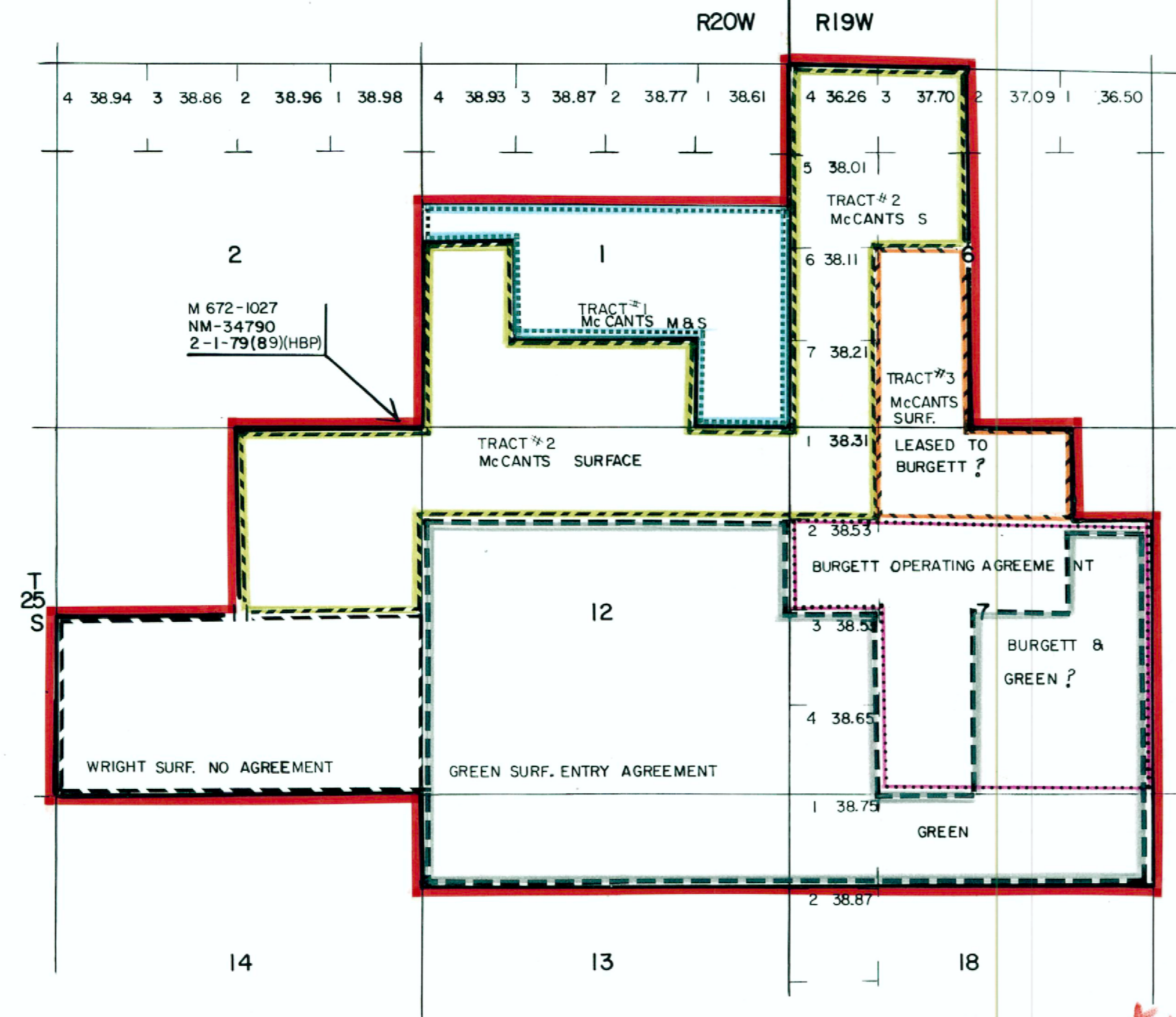


R20W

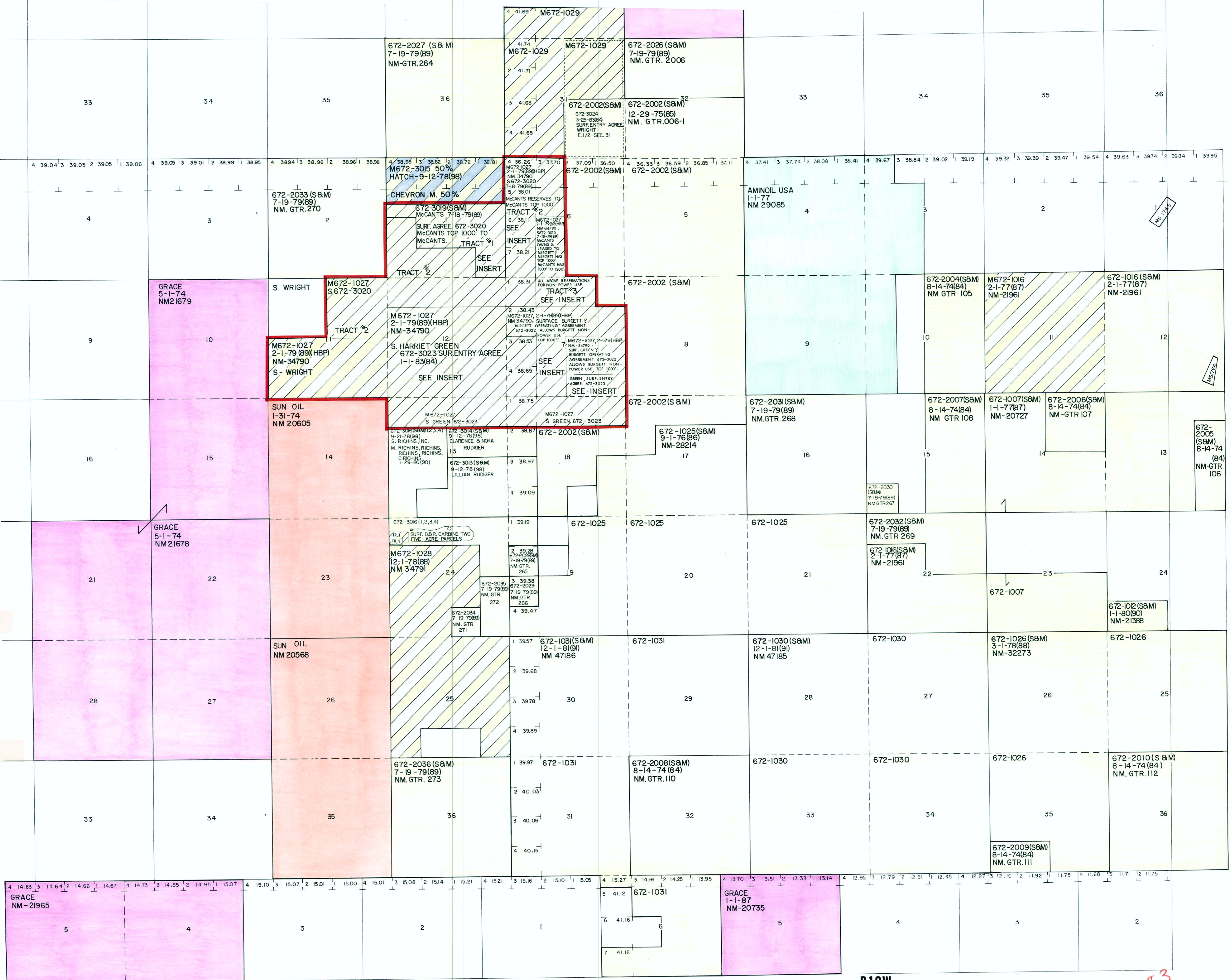
R19W

INSERT TO ANIMAS, NEW MEXICO LAND STATUS MAP 5-20-83



AMAX FED. LEASE # M672-1027 NM-34790
McCANTS, BURGETT & GREEN AGREEMENTS
 McCANTS OPERATING AGREEMENT 672-3023
 TRACT # 1 S&M 672-3019 7-19-79(89)
 T2S&R20W
 SEC. 1: S1/2S1/2N1/2, N1/2SE, SESENE, S240Ac
 McCANTS RESERVES TO McCANTS NON-POWER USE THE TOP 1000'
 TRACT # 2 SURFACE ONLY (McCANTS) 672-3020 7-19-79(89)
 MINERALS (USA) M672-1027 (2-1-79)(89)(HBP)
 T2S&R19W
 SEC. 6: LOTS 3,4,5,6,7,8,9,10
 SEC. 7: LOT 1
 T2S&R20W
 SEC. 1: W1/2SW, SE, SWSE
 SEC. 11: NE
 SEC. 12: N1/2N1/2 760 AC.
 McCANTS RESERVES TO McCANTS NON-POWER USE THE TOP 1000'.
 TRACT # 3
 SURFACE McCANTS 672-3020
 MINERALS USA 672-1027
 T2S&R19W
 SEC. 6: E1/2SW
 SEC. 7: NEW, NWNE, 100 AC.
 SURFACE OWNED BY McCANTS AND LEASED TO BURGETT, MINERALS USA LEASED TO AMAX (672-1027).
 AN AGREEMENT ALLOWS BURGETT (672-3023) TO OPERATE FOR NON-POWER USE TO 1000 FEET BELOW SURFACE TRACT # 3.
 AN AGREEMENT ALLOWS McCANTS (672-3020) NON-POWER USE BETWEEN 1001 FEET AND 1000 FEET BELOW THE SURFACE TRACT # 3.
 AMAX HAS: 1) ALL POWER USE ACTIVITIES ON TRACTS 2 & 3 TERMS OF FED. LEASE 672-1027.
 2) ALL POWER USE ACTIVITIES ON TRACT 1 TERMS OF McCANTS LEASE (672-3019).
 3) FULL USE SURFACE TRACTS 2&3.
 4) ACCESS TRACTS 1,2,3 FOR ALL PURPOSES PERMITTED UNDER THE FEDERAL AND McCANTS LEASE.
 5) USE GEOTHERMAL RESOURCES FOR NON-POWER USES AS REASONABLE.
 BURGETT OPERATING AGREEMENT WITH AMAX (672-3023) 12-14-78(88)
 ALLOWS BURGETT NON-POWER USE TO OPERATE TO 1000 FEET BELOW SURFACE ON:
 T2S&R19W
 SEC. 7: S1/2N1/2, SE, E1/2SW 400 AC.
 AMAX HAS THE RIGHT TO CONDUCT ALL ACTIVITIES AS PERMITTED UNDER FEDERAL LEASE 672-1027 WHICH COVERS THE MINERALS.
 GREEN SURFACE ENTRY AGREEMENT 672-3023 1-1-83(84)
 T2S&R19W
 SEC. 7: LOTS 3&4, SE, SE (SEE ALSO BURGETT AGREEMENT)
 SEC. 18: LOT 1, NEW, N1/2NE.
 T2S&R20W
 SEC. 12: S1/2N1/2, S1/2
 SEC. 13: N1/2N1/2 1076 AC.

See map dated 10-12-83



AMAX
 CHEVRON
 AMINOIL USA
 GRACE GEOTHERMAL
 SUN OIL
 SEVERED INTEREST

SCALE 1:24,000
 1 MILE
 FEET
 KILOMETER

AMAX
 GEOTHERMAL BRANCH
 ANIMAS, NEW MEXICO
 LAND STATUS
 DATE: 10-12-83