

R8W
112°45'

R7W

R6W

112°30'

T 23 S

T 23 S

T 24 S

T 24 S

T 25 S

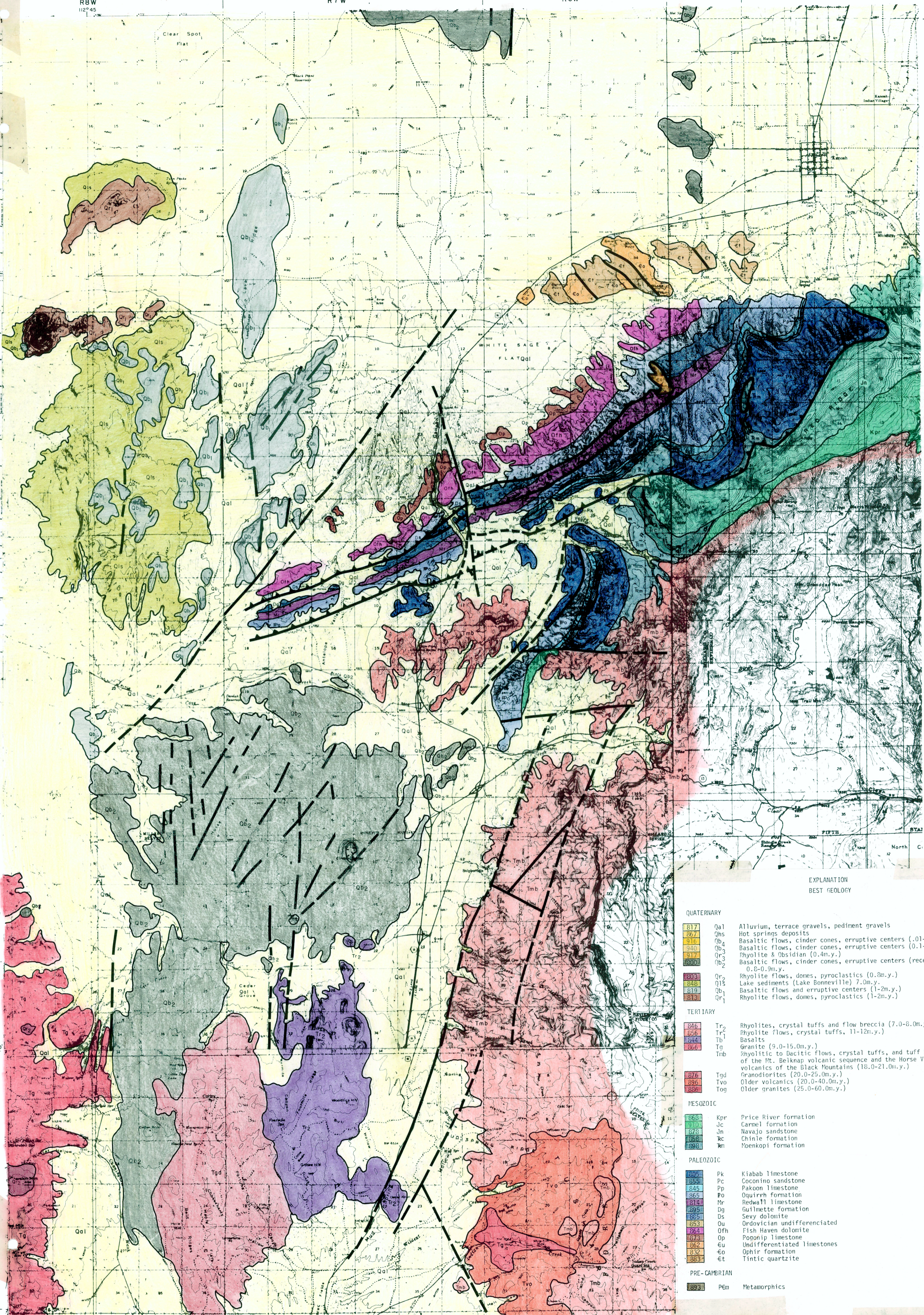
T 25 S

T 26 S

T 26 S

T 27 S

T 27 S



EXPLANATION
BEST GEOLOGY

QUATERNARY

- 817 Qa1 Alluvium, terrace gravels, pediment gravels
- 867 Qhs Hot springs deposits
- 916 Qb1 Basaltic flows, cinder cones, eruptive centers (0.1-0.04m.y.)
- 940 Qb2 Basaltic flows, cinder cones, eruptive centers (0.1-0.6m.y.)
- 917 Qc1 Rhyolite & Obsidian (0.4m.y.)
- 800 Qc2 Basaltic flows, cinder cones, eruptive centers (recent)
- 809 Qc3 0.0-0.9m.y.
- 848 Qc4 Rhyolite flows, domes, pyroclastics (0.8m.y.)
- 819 Qc5 Lake sediments (Lake Bonneville) 7.0m.y.
- 813 Qc6 Basaltic flows and eruptive centers (1-2m.y.)
- 813 Qc7 Rhyolite flows, domes, pyroclastics (1-2m.y.)

TERTIARY

- 846 Tr2 Rhyolites, crystal tuffs and flow breccia (7.0-8.0m.y.)
- 856 Tr1 Rhyolite flows, crystal tuffs, 11-12m.y.)
- 844 Tg Basalts
- 866 Tg Granite (9.0-15.0m.y.)
- Tmb Rhyolitic to dacitic flows, crystal tuffs, and tuff breccias of the Mt. Beiknap volcanic sequence and the Horse Valley volcanics of the Black Mountains (18.0-21.0m.y.)
- 876 Tgd Granodiorites (20.0-25.0m.y.)
- 896 Tvo Older volcanics (20.0-40.0m.y.)
- 886 Tog Older granites (25.0-60.0m.y.)

MESOZOIC

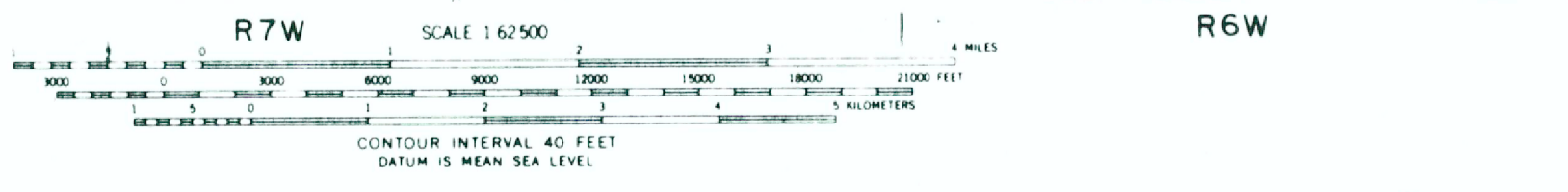
- 860 Kpr Price River formation
- 910 Jc Carmel formation
- 870 Jn Navajo sandstone
- 858 Rc Chinle formation
- 898 Rm Moenkopi formation

PALEOZOIC

- 895 Pk Kiabab limestone
- 855 Pc Coconino sandstone
- 845 Pp Pakoon limestone
- 865 Po Oquirrh formation
- 814 Mr Redwall limestone
- 895 Dg Guilmette formation
- 885 Ds Sevy dolomite
- 883 Ou Ordovician undifferentiated
- 864 Ofh Fish Haven dolomite
- 873 Op Pogoan limestone
- 862 Eu Undifferentiated limestones
- 832 Eo Ophir formation
- 883 Et Tintic quartzite

PRE-CAMBRIAN

- 893 P6m Metamorphics



AMAX EXPLORATION, INC.
A SUBSIDIARY OF AMAX, 7700 WEST 40TH AVENUE, WHAT RIDGE, COLORADO 80033

GEOHERMAL BRANCH

Cove Fort - Utah
Geology