

R8W
112°45'

R7W

R6W

112°30'

T 23 S

T 23 S

T 24 S

T 24 S

T 25 S

T 25 S

T 26 S

T 26 S

T 27 S

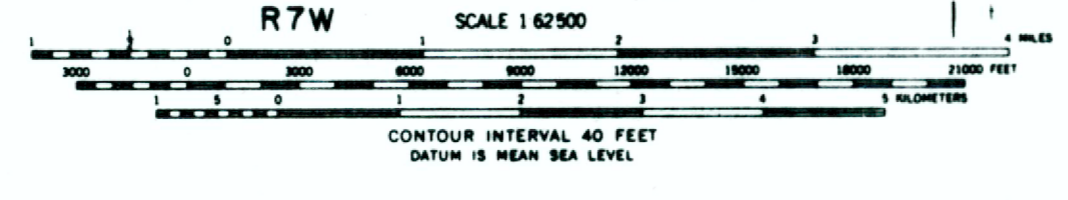
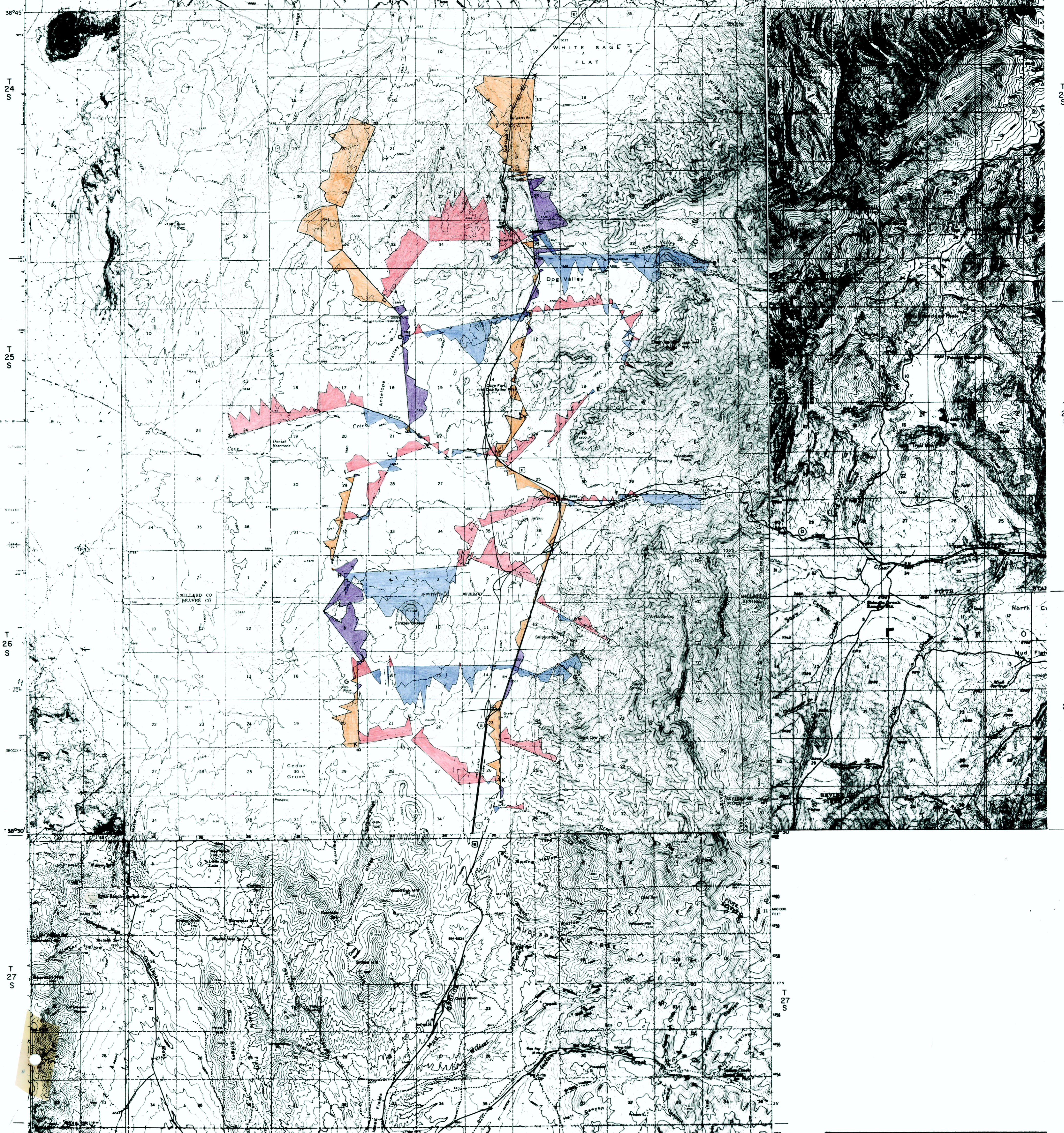
T 27 S

R8W

R7W

R6W

112°30'



AMAX EXPLORATION, INC.
 A SUBSIDIARY OF AMAX INC. 7100 WEST 44TH AVENUE, WHEAT RIDGE, COLORADO 80033
GEOHERMAL BRANCH

Cove Fort - Utah
 SELF POTENTIAL PROFILES