

PLATE I  
LOG COMPOSITE OF  
UTAH STATE GEOTHERMAL WELL  
14-29  
UNION OIL COMPANY WELL  
COVE FORT - SULPHURDALE, KGRA  
MILLARD COUNTY, UTAH  
MAY 1980

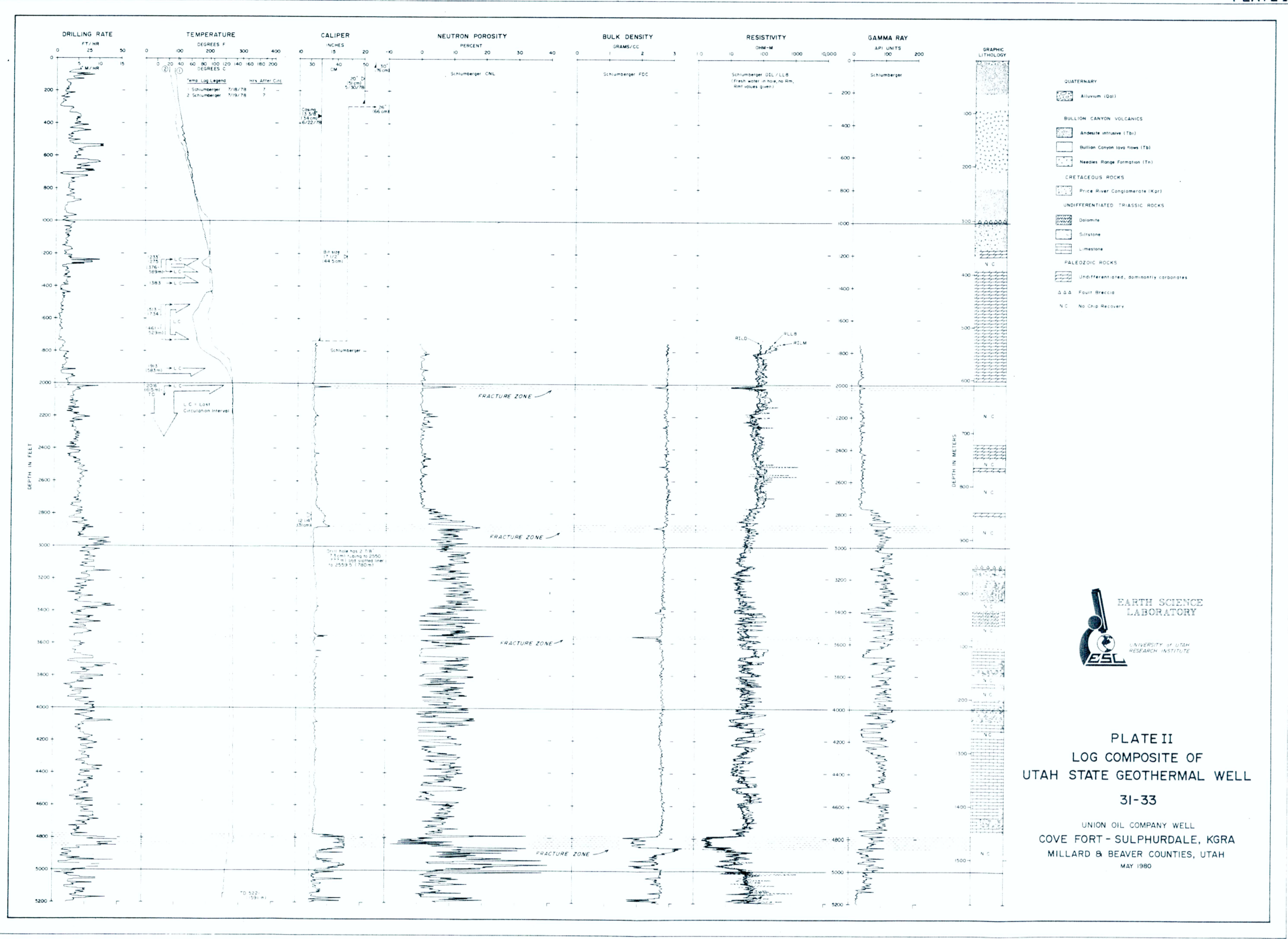


PLATE II  
LOG COMPOSITE OF  
UTAH STATE GEOTHERMAL WELL  
31-33  
UNION OIL COMPANY WELL  
COVE FORT - SULPHURDALE, KGRA  
MILLARD & BEAVER COUNTIES, UTAH  
MAY 1980

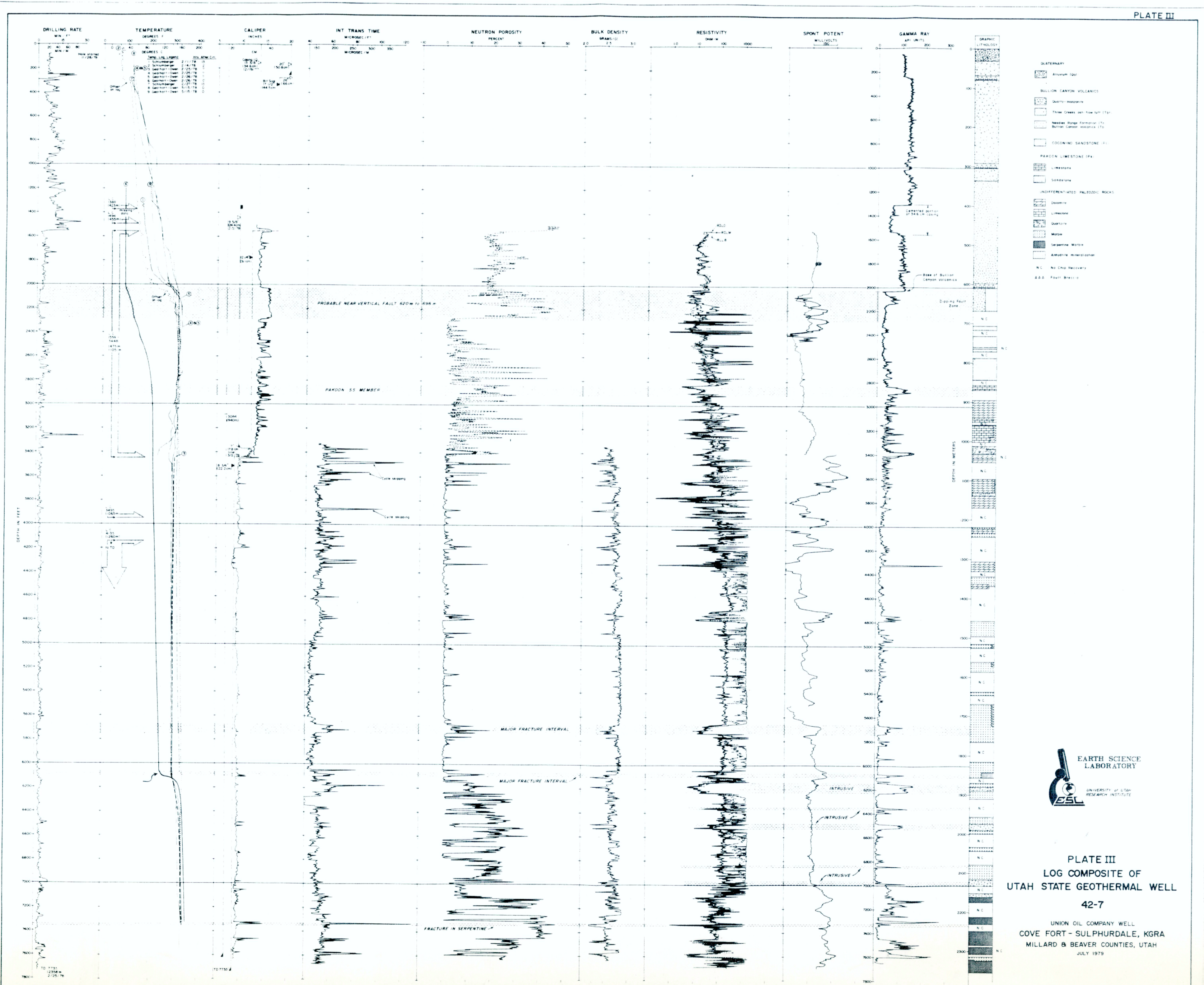


PLATE III  
LOG COMPOSITE OF  
UTAH STATE GEOTHERMAL WELL  
42-7  
UNION OIL COMPANY WELL  
COVE FORT - SULPHURDALE, KGRA  
MILLARD & BEAVER COUNTIES, UTAH  
JULY 1979

**AMAX** EXPLORATION, INC.  
GEOHERMAL BRANCH  
LOG COMPOSITE  
OF GEOTHERMAL WELLS  
SOURCE: DRWN. BY: DATE: 9/82