

R 57 E

R 58 E

R 59 E

R 60 E

T 40 N

T 40 N

T 39 N

T 39 N

T 38 N

T 38 N

T 37 N

T 37 N

T 36 N

T 36 N

T 35 N

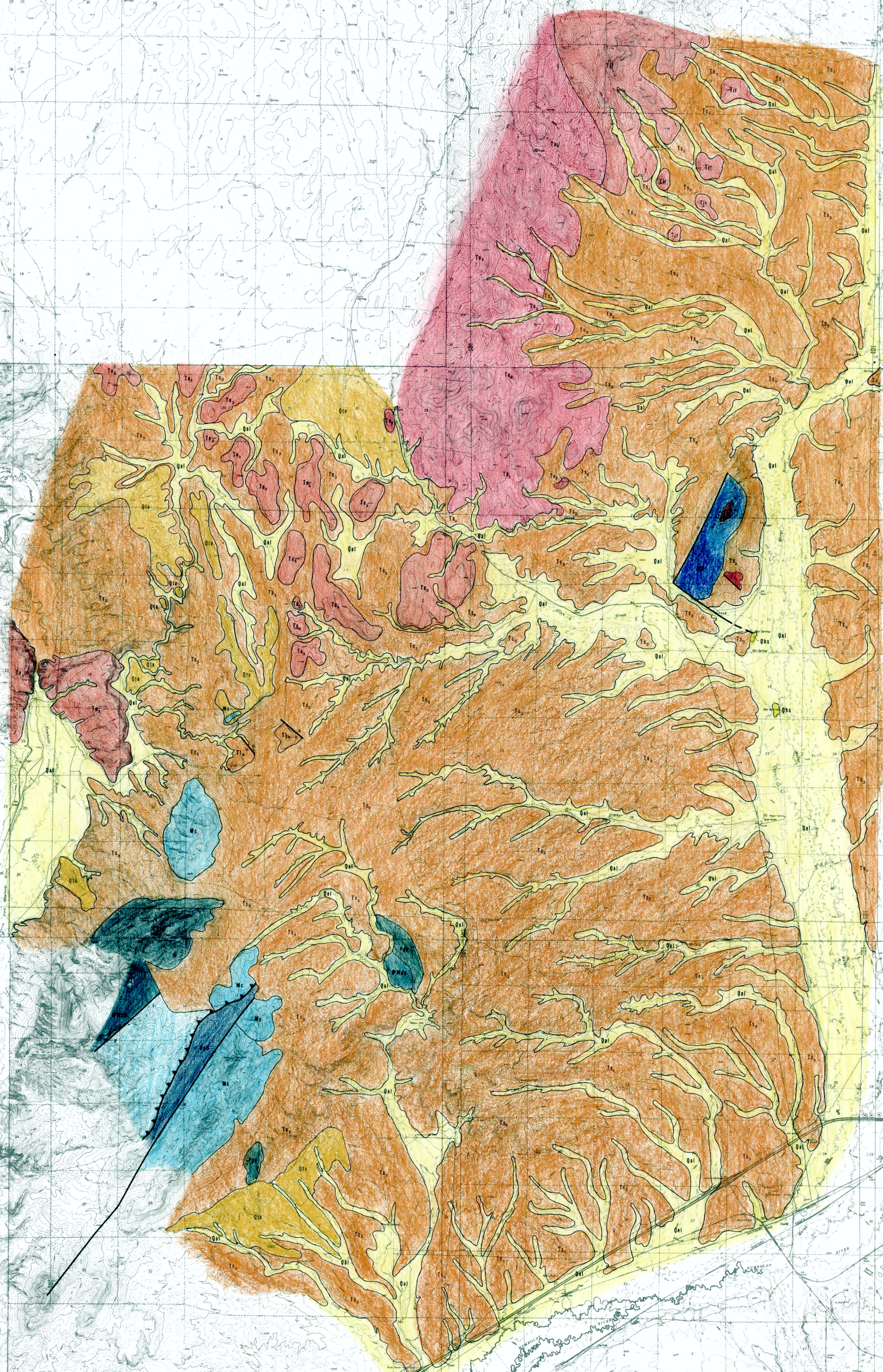
T 35 N

R 57 E

R 58 E

R 59 E

R 60 E



919	Qhs	Hot Springs Deposits - Siliceous and/or calcareous
916	Qa1	Recent Alluvium
917	Qta	Terrace gravels - alluvial fans
862	Tt3	Pyroxene Dacite crystal tuff, 6-17 m.y.
918	Ts3	Tuffs, tuffaceous sediments, crystal tuff, conglomerate and minor limestone, 6-17 m.y.
896	Ta3	Pyroxene & Hornblende Andesite Crystal tuff 6-17 m.y.
856	Tjr	Jarbridge Rhyolite - crystal tuff & domes 6-17 m.y.
866	Ta2	Latite-Andesite flows, crystal tuff and pyroclastic rocks/hornblende and pyroxene crystals - 17-34 m.y.
824	Tc1	Conglomerate with quartzite and chert clasts, well cemented by silica or tuffaceous matrix, 34-41 m.y.
825	Pqp	Gerster and Phosphoria Formations - Carbonates, phosphorites and cherts
826	PMdp	Diamond Peak Formation - conglomerate, sandstone, shale and some limestone
825	Mc	Chainman Shale - shale and sandstone
826	Dgd	Guilmette and Devils Gate Formations - Dolomite and limestone
827	WF	Western Facies mudstone, shale, chert, limestone and greenstones. Ordovician, Silurian and Devonian age