

T.13N

T.13N

T.12N

T.12N

T.11N

T.11N

T.10N

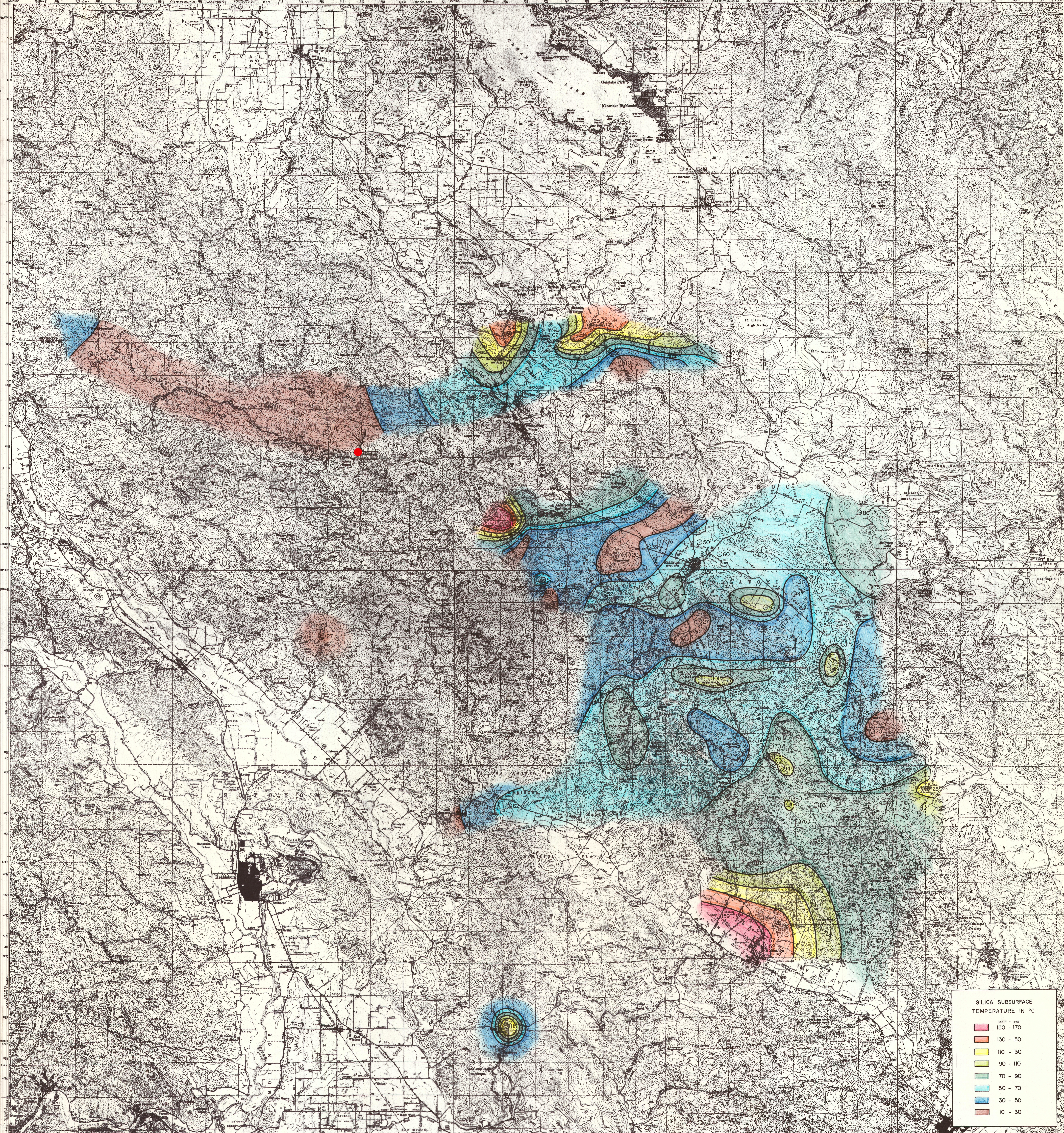
T.10N

T.9N

T.9N

T.8N

T.8N



SILICA SUBSURFACE TEMPERATURE IN °C

150 - 170
130 - 150
110 - 130
90 - 110
70 - 90
50 - 70
30 - 50
10 - 30