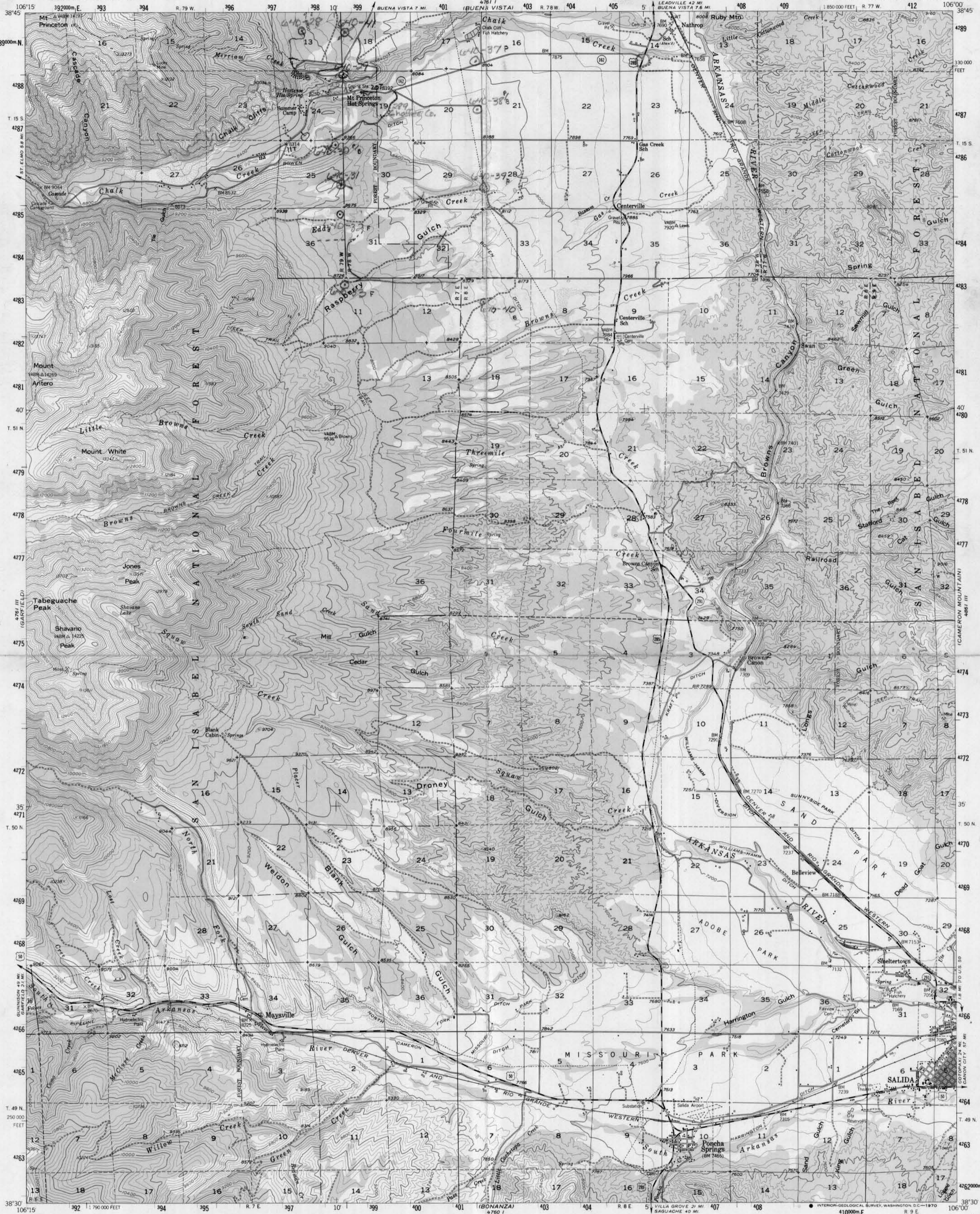


INT. RES. 4788000

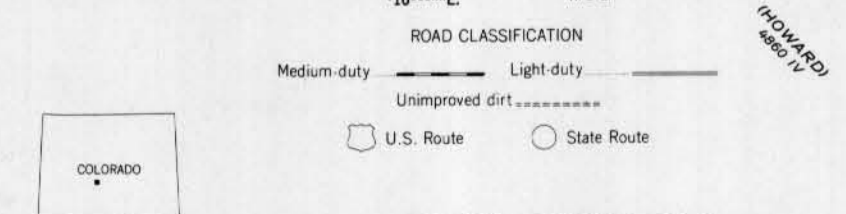
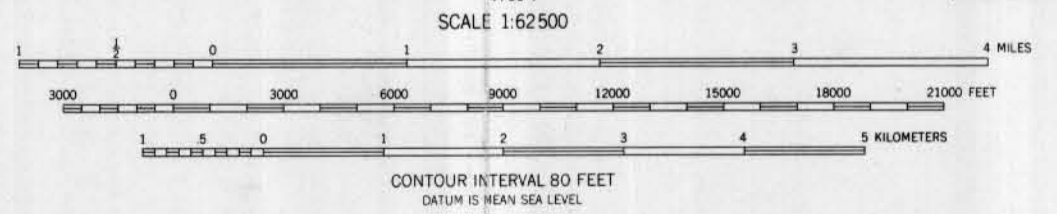
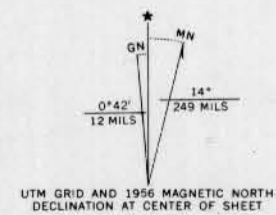
INT. RES. 4788000

UNITED STATES
DEPARTMENT OF THE INTERIOR
GEOLOGICAL SURVEY

PONCHA SPRINGS QUADRANGLE
COLORADO-CHAFFEE CO
15 MINUTE SERIES (TOPOGRAPHIC)



Maped, edited, and published by the Geological Survey
Control by USGS and USC&GS
Topography from aerial photographs by photogrammetric methods
Aerial photographs taken 1953. Field check 1956
Polyconic projection. 1927 North American datum
10,000-foot grid based on Colorado coordinate system,
central zone
1000-meter Universal Transverse Mercator grid ticks,
zone 13, shown in blue
Red tint indicates areas in which only
landmark buildings are shown
Dashed land lines indicate approximate locations
Certain land lines are omitted in T. 50 and S. 1 N., R. 7 E.,
and T. 15 S., R. 7 W., because of insufficient data
T. 49, 50, and S. 1 N., R. 6, 7, 8 and 9 E. are based
on the New Mexico Principal Meridian
T. 15 S., R. 7, 7 E. and 7 W. are based
on the Sixth Principal Meridian



THIS MAP COMPLIES WITH NATIONAL MAP ACCURACY STANDARDS
FOR SALE BY U. S. GEOLOGICAL SURVEY, DENVER, COLORADO 80225 OR WASHINGTON, D. C. 20242
A FOLDER DESCRIBING TOPOGRAPHIC MAPS AND SYMBOLS IS AVAILABLE ON REQUEST

PONCHA SPRINGS, COLO.
N3830-W10600/15
1956
AMS 4761 II-SERIES V777

Gross